



The Division of Agriculture Activities

April 05, 2012

Find us on the web at:
<http://dnr.alaska.gov/ag>

Director's Office

Franci Havemeister
907-761-3867
Franci.Havemeister@alaska.gov

Curt Sandvik
907-761-3866
Curt.Sandvik@alaska.gov

Lora Haralson
907-761-3851
Lora.Haralson@alaska.gov

Connie Cannon
907-761-3850
Connie.Cannon@alaska.gov

In This Issue

- [Director's Note](#)
- [Agriculture Calendar](#)
- [AK Grown Source Book Sign-Up](#)
- [2012 Census of Agriculture](#)
- [Alaska Ag in the Classroom \(AIRC\)](#)
- [Alaska Farm-to-School Grant](#)
- [Nominate a Local Food Hero](#)
- [US Live Plants Transiting Canada](#)
- [Bee Registration](#)
- [Annual Spring Seed Sale - April 16th to 27th at the Alaska PMC](#)
- [Environmental Health Lab | AK DEC](#)

To remove your name from our e-newsletter list, [click here](#).

To be added to our e-newsletter list, [click here](#).

Questions or Comments?
E-Mail or call 907-761-3864.

Follow us on Facebook:
www.facebook.com/dnr.alaskagrown

Directors Note

In the Matanuska Valley it appears that spring has finally sprung! The temperature hovered around 48 degrees as I drove home recently, water is clearly visible running to the ditches and puddles abound in low areas. The sun now provides its glorious warmth, the daylight hours continue to increase and overall.....it feels good to be an Alaskan. It is always amazing to me how this time of year brings such cheer; three weeks ago as I drove to work early on a Monday morning and noticed the -12 temperature reading, I definitely was not of that same mindset. Life in Alaska is good – but it is best in the spring!

This is a busy time of year for everyone but please take the time to peruse the newsletter and make note of any upcoming events or deadlines. The Division currently has several grant opportunities available, so if you are a producer or an educator please take the time to review the available grants, linked on our website at dnr.alaska.gov/ag/ag_grants.htm.

Alaska Agriculture Day is just around the corner - coming up on May 1st. This is a great opportunity to educate Alaska's youth on the importance of agriculture. If you are interested in spending a few hours in the classroom please contact your local farm bureau, soil and water group, Alaska Agriculture in the Classroom or a Division of Agriculture office to learn about opportunities for that day.

The Alaska Legislature continues to support Alaskan Agriculture. Last week, the House unanimously passed HCR24. This resolution calls the Governor to establish a state food resource development working group with the primary goal of producing more locally grown and harvested food items to be consumed in Alaska, by Alaskans.

On March 22, the division hosted a potato grower's meeting to discuss current issues. The meeting was well attended by industry and covered topics such as Bacterial Ring Rot, Late Blight, field inspections and seed certification standards. There was grower interest in new regulations requiring that commercial growers must use certified seed when planting more than 1 acre, as well as interest in the Alaska Seed Grower's Inc. (ASGI) maintaining authority for the potato seed certification program. The group voted 13 to 1 to keep the authority within ASGI. Disease issues were discussed at length, and with the reoccurrence of both Bacterial Ring Rot and Late Blight this past season, it is imperative that growers keep a close eye on their fields for sign of disease. If disease symptoms appear in your field or you have any questions please contact [Bill Campbell](#) for assistance.

The Farm-to-School program continues to work diligently with school districts to move Alaska Grown and harvested food into the school meals. Sitka's Keet Gooshi Heen Elementary school was the winner of the first Farm-to-School Challenge this past fall, and will be recognized next week for its success in incorporating salmon into the school lunch menu. Whether it is Alaska Grown or harvested, local foods are a healthy choice for Alaskans.

May spring come quickly to your area as well.

-Franci Havemeister

"Spring shows what God can do with a drab and dirty world."

- Virgil A. Kraft.

Agriculture Calendar

- ▶ **Fri. Apr. 6th** 6 - 8:30 pm; **Organic Gardening Course;** Mat-Su College, Palmer.
Fri. **Apr. 13th** 6 - 8:30 pm; *Details: [here](#).*
- ▶ **Thu. Apr. 12th** 6 - 10 pm; **High Tunnel Grower Training;** Mat-Su College, Palmer.
Thu. **Apr. 19th** 6 - 10 pm; *Details: [here](#).*
Thu. **Apr. 26th** 6 - 10 pm;
- ▶ **Sat. Apr. 14th**, 8 am - 4:30 pm: **Alaska Master Gardeners Conf.;** Anchorage Senior Ctr.
Details: [here](#).
- ▶ **Sat. Apr. 21st**, 9 am - 12 pm: **Peony Growers School;** Mat-Su College, Palmer.
Registration details: [here](#).
- ▶ **Sat. Apr. 21st**: 9 am - 5 pm: **Kenai Peninsula Ag Forum;** Ninilchik Fairgrounds.
Agenda: [here](#).
- ▶ **Fri. Apr. 27th**, 1:00 pm; **Board of Agriculture & Conservation Meeting;**Palmer.
Phone participants: (800) 315-6338; Passcode: 122#
Details: [here](#).
- ▶ **Sat. Apr. 28th**, 11 am - 4 pm; **Alaska Grown Day;** Noel Wien Library, Fairbanks
Details: [here](#).
- ▶ **Tue. May. 1st**, 9 am: **Alaska Agriculture Day;** Activities all across the state.
Contact Alaska.aitc@gmail.com for info

If you have an event that you would like to add to the calendar, please contact [Lora Haralson](#).



Marketing Staff

http://dnr.alaska.gov/ag/ag_ms.htm

Amy Pettit -
Marketing Manager
907-761-3864
Amy.Pettit@alaska.gov

Johanna Herron
907-374-3714
Johanna.Herron@alaska.gov

Kristi Krueger
907-761-3858
Kristi.Krueger@alaska.gov

Marketing Section

Want to be listed in the 2012 Alaska Grown Source Book? Sign up Today!

It's time to submit your information for the 2012 Alaska Grown Source Book. Don't miss the opportunity to be listed in this statewide publication! The Division prints a minimum of 5000 copies of the Source Book, for distribution at statewide Agricultural events and fairs, farmer's markets, and at the Division of Agriculture's offices.

This year, efforts will be focused on an improved online version of the source book. If you were listed in the 2010 publication, you should've received an email from Kristi Krueger asking you to update your information...remember to respond! If you didn't receive that email, or are a new producer of food and farm products, you can tell us about your business using this link:

dnr.alaska.gov/ag/ag_AKG2012.htm.

If you have any questions or problems, contact Kristi Krueger at (907) 761-3858 or Kristi.krueger@alaska.gov.



Please participate in upcoming 2012 Census of Agriculture

The number of farms in Alaska is growing. How do we know? Because the National Agricultural Statistics Service (NASS) tracks this data. In preparation for the 2012 Census of Agriculture, you may be contacted by NASS either through the mail or by phone. The Division of Agriculture encourages you to participate in these surveys; the information gathered on NASS reports relates directly to the Specialty Crop Block Grant funding received from the USDA. If you have any questions, please contact Alaska NASS representative, Suzan Benz at Suzan.Benz@nass.usda.gov.



The marketing section's home page is located at dnr.alaska.gov/ag/ag_ms.htm. Remember to follow Alaska Grown on Facebook at facebook.com/dnr.alaskagrown for the latest updates.

ARLF Services

http://dnr.alaska.gov/ag/ag_arlf.htm

Amanda Swanson
Loan Officer

907-761-3869
Amanda.Swanson@alaska.gov



Inspection Staff

http://dnr.alaska.gov/ag/ag_is.htm

Doug Warner
Inspection Manager

907-761-3861
Douglas.Warner@alaska.gov

Mia Kirk
907-761-3853
Mia.Kirk@alaska.gov

Barb Hanson
907-761-3854
Barbara.Hanson@alaska.gov

Leo Kazeck
907-761-3870
Leo.Kazeck@alaska.gov

Kirk Brown
907-761-3857
Kirk.Brown@alaska.gov

Alaska Farm-to-School Program Update

Alaska Agriculture Day: May 1st

Alaska Agriculture Day is just around the corner and we are excited to announce the new Alaska Agriculture in the Classroom coordinator, Viola Amburg. If you are interested in having a volunteer visit your classroom OR if you are interested in volunteering to visit a class then please contact Viola at akaitc@alaskaafb.org or (907) 590-1221.



AITC Coordinator Viola Amburg



Alaska Agriculture Day is a great way to kick start the growing season and get kids excited for summer. Consider getting involved and helping to foster agricultural literacy in the next generation of Alaskans. Classroom visits and farm tours are popular ways for producers to participate in this fun annual event.

Alaska Ag in the Classroom (AITC) – Growing Alaska's Future

Alaska Ag in the Classroom's goal is to help Alaskan students understand the importance agriculture plays in our everyday lives. AITC offers educational support to both public and private schools around the state, as well as home schools. AITC partners

with community leaders to encourage teacher involvement via AITC lesson plans, workshops, online resources, field trips, special guest speakers, classroom presentations and more.

AITC is looking for dedicated individuals who want to sit on their Board of Directors. If you are interested in participating on the board - please contact Viola Amberg at akaitc@alaskaafb.org or (907) 590-1221. Please respond no later than April 15th.

Alaska Farm to School Grant

As a reminder the Farm to School mini-grant is accepting proposals through April 23rd!

To apply for a mini-grant, go to www.dnr.alaska.gov/ag and click on "Grants" under the "Programs" header. Applications can also be emailed to johanna.herron@alaska.gov, or mailed or faxed to the Division of Agriculture's Central or Northern Region office:

Central Region Office
1800 Glenn Hwy., Suite 12
Palmer, AK 99701
Fax: 907-745-7112

Northern Region Office
1648 S. Cushman St., Suite 201
Fairbanks, AK 99701
Fax: 907-328-1951

Local Food Hero Contest

Help promote your local food hero and win money for your youth organization! All you need to do is send us a photo and the story behind your food hero. To find out more about the contest go to: dnr.alaska.gov/ag/ag_FTS.htm.

If you have any questions about the Farm-to-School program, contact Johanna Herron at Johanna.herron@alaska.gov or (907) 374-3714. You can also contact Kristi Krueger at Kristi.Krueger@alaska.gov, or (907) 761-3858.

For Farm to School updates, news, grant opportunities, and announcements join our list-serv at: list.state.ak.us/soalists/akfarmtoschool/jl.htm. Also remember to check out the Farm-to-School facebook page at: facebook.com/AlaskaFarmToSchool.



Land Sales & Grazing Leases

http://dnr.alaska.gov/ag/ag_sales.htm

Dan Proulx

907-374-3716

Dan.Proulx@alaska.gov

Erik Johnson

907-761-3863

Erik.Johnson@alaska.gov



Fairbanks Office

907-328-1950

Curtis Knight

907-374-3732

Curtis.Knight@alaska.gov

Pest Detection / Inspection Section

Bee Registration

It is that time of year!

Please complete the Alaska Bee Registration form that is accessible on our website at dnr.alaska.gov/ag/Inspection/BeeRegistrationCard.pdf.



Photo: Luc Viafour | www.Lucnix.be



Please email the completed form directly to Kirk.Brown@alaska.gov, fax to 907-745-7254 or mail directly to the Inspection Office at:

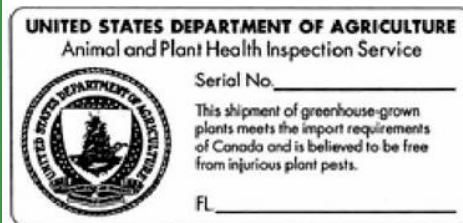
Alaska Division of Agriculture
1800 Glenn Hwy, Ste 12
Palmer, AK 99645

US Live Plants Transiting Canada

Are you in the greenhouse and nursery industry and expecting commercial shipments of live plant material from the lower 48 states arriving by truck? Will you have the proper paperwork for these plants to transit Canada* and reenter back into the US? The USDA regulations require that either a phytosanitary certificate or greenhouse grown label (see below) accompany the shipment transiting Canada.



Live plants require proper certification to enter the US after transiting Canada



USDA Greenhouse Grown label

The Phytosanitary certificate is a letter size document, while the greenhouse grown label would be affixed to a shipping document, such as bill of lading, airway bill, etc. If you have questions about these documents or the shipment of plant materials through Canada, contact the Alaska Division of Agriculture at (907) 745-7200.

“Commodities that are transported under Canada Customs bond are exempt from Canada’s import requirements only. A USDA Phytosanitary Certificate or Greenhouse label is still needed to make entry back into the US.”

PHYTOSANITARY CERTIFICATE		TO: THE PLANT PROTECTION ORGANIZATION OF	TO: THE PLANT PROTECTION ORGANIZATION OF
SAMPLE		SAMPLE	
<p>CERTIFICATION</p> <p>This is to certify that the plants, plant product or other regulated articles described herein have been inspected and/or tested according to appropriate official procedures and are considered to be free from the quarantine pests, specified by the reporting contracting party and to conform with the current phytosanitary requirements of the reporting contracting party including those for regulated non-quarantine pests.</p>			
<p>DISINFESTATION AND/OR DISINFESTATION TREATMENT</p> <p>1. DATE: _____ 2. METHOD: _____</p>			
<p>DESCRIPTION OF THE CONSIGNMENT</p> <p>3. NAME AND ADDRESS OF THE CONSIGNOR: _____ 4. DECLARED NAME AND ADDRESS OF THE CONSIGNEE: _____</p>			
5. NAME OF PRESENT AND QUANTITY DECLARED: SAMPLE		6. BOTANICAL NAME OF PLANTS: SAMPLE	
7. NUMBER AND DESCRIPTION OF PACKAGES: SAMPLE		8. INCURRED NAME: SAMPLE	
9. PLACE OF ORIGIN: SAMPLE		10. INCURRED NAME OF CONSIGNEE: SAMPLE	
<p>ADDITIONAL DECLARATION</p> <p>11. DATE ISSUED: _____ 12. NAME OF AUTHORIZED OFFICE, TYPE OF PEST: _____ 13. SIGNATURE OF AUTHORIZED OFFICER: _____</p>			

Plant material returning to the US after transiting Canada must be accompanied by a USDA phytosanitary certificate

Plant Materials Center

<http://plants.alaska.gov/>

Main Phone: 907-745-4469

Stoney Wright

Manager, Plant Materials Center
907-745-8105

Stoney.Wright@alaska.gov

Bill Campbell

907-745-8724

William.Cambbell@alaska.gov

Peggy Hunt

907-745-8721

Peggy.Hunt@alaska.gov



Ron Cotterman 907-745-8104

Ron.Cotterman@alaska.gov

Lyubo Mahlev 907-745-8782

Lyubomir.Mahlev@alaska.gov

Kathi Van Zant 907-745-8138

Kathi.VanZant@alaska.gov

Phil Czaplá 907-745-8747

Phil.Czaplá@alaska.gov

Casey Dinkel 907-745-8108

Casey.Dinkel@alaska.gov

Brianne Blackburn 907-745-8785

Brianne.Blackburn@alaska.gov

Sue Lincoln 907-745-8062

Sue.Lincoln@alaska.gov

Dan Coleman 907-745-8061

Dan.Coleman@alaska.gov

Rob Carter 907-745-8127

Rob.Carter@alaska.gov

Brennan Low 907-745-8092

Brennan.Low@alaska.gov

Candice Easley 907-745-8735

Candy.Easley@alaska.gov

Plant Materials Center

Annual Plant Materials Center Spring Seed Sale: April 16th - 27th

Each spring and fall, the Alaska Plant Materials Center sells native plant seed of grasses and forbs (flowers), plus wheat, oats, and barley. The spring seed sale begins April 16th and runs through April 27th.

The Plant Materials Center (PMC) sells seed for commercial growers only. Grasses and forbs are sold by the pound. Grain is sold in 100 lb. units. There are 22 grass species, 12 forb species, and 8 grain varieties (3 species) available for sale this spring. A complete list is available at plants.alaska.gov/seedsale/.

On-line ordering is available for the annual seed sale. More information about the plant species available, and links to order forms will be available from the PMC website, plants.alaska.gov. For more information, please contact Peggy Hunt at either 745-8721 or peggy.hunt@alaska.gov.

For smaller amounts of native seed, please contact businesses listed on the **Native Plant Source Directory**, available online at plants.alaska.gov/native/.

About the Directory of Native Plant Sources

The Plant Materials Center (PMC) publishes the "Directory of Alaska Native Plant Sources" in response to numerous requests from the public, industry, and agencies for sources of native plant materials from Alaska. This Directory depends on the response of suppliers, and does not claim to include all producers or sellers of native Alaskan plants.

The PMC is not responsible for changes from the growers as to what plants they may have available. If you are aware of an omission or error, please email [Peggy Hunt](mailto:Peggy.Hunt@alaska.gov) or contact the Plant Materials Center, at (907) 745-4469.

Native plants from Alaska are needed for small and large scale revegetation projects, mine site rehabilitation, landscaping on public and private lands, stream bank restoration and habitat enhancement.

The purpose of this directory is to serve as a concise reference for consumers, a marketing tool for native plant and seed suppliers, and to encourage the production and use of Alaska native plants.

If you are involved with native plants, please visit or call. We are interested in working with you.

Know of a grower that should be on this list? Please visit our [add grower](#) page and send us their details.

Grass Seed

Wildflower Seed and Plants

Alaska Trees and Shrubs

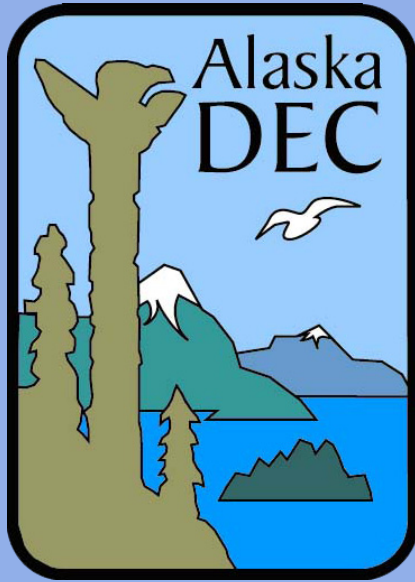
Revegetation Resources

The Native Plant Source Directory is a resource to help non-commercial growers find seed

State of Alaska												
Alaska Department of Natural Resources												
Division of Agriculture												
Natural Resources > Agriculture > Plant Materials Center												
Annual Seed Sale of Native Alaskan Grass, Forbs, and Foundation Grains												
Forbs Offered for Sale												
Forbs offered for sale:												
Scientific Name	Common Name	Release Name	Lot #	Test Date	% Purity	% Germ.	Grams Available	Unit	Price per gram	Adjusted Price / gram	Order Quantity	Order Cost
<i>Achillea millefolium borealis</i>	Boreal Yarrow	Twenty Mile	04PMC13	11/12/2008	70.75	88	4072.38	g	\$0.44	\$0.27		\$0.00
<i>Achillea millefolium borealis</i>	Boreal Yarrow	Twenty Mile	03PMC21	4/4/2011	91.66	82	5928	g	\$0.44	\$0.33		\$0.00
<i>Artemisia stelleriana</i>	Dusty Miller	Shemya	06PMC123	3/16/2010	99.93	88	108	g	\$0.44	\$0.39		\$0.00
<i>Artemisia stelleriana</i>	Dusty Miller	Shemya	06PMC123	3/16/2010	99.93	88	57.88	g	\$0.44	\$0.39		\$0.00
<i>Artemisia tilesii</i>	Tilesii's Wormwood/Sinkweed	'Caiggluk'	08PMC128	5/6/2011	99.44	83	5361.4	g	\$0.44	\$0.36		\$0.00
<i>Artemisia tilesii</i>	Tilesii's Wormwood/Sinkweed	'Caiggluk'	07PMC109	5/6/2011	92.1	98	13756.2	g	\$0.44	\$0.40		\$0.00
<i>Artemisia tilesii</i>	Tilesii's Wormwood/Sinkweed	'Caiggluk'	08PMC118	8/23/2010	93.88	88	31	g	\$0.44	\$0.36		\$0.00
<i>Artemisia tilesii</i>	Tilesii's Wormwood/Sinkweed	'Caiggluk'	06PMC107	3/22/2011	91.79	67	4961	g	\$0.44	\$0.27		\$0.00
<i>Potentilla bimundorum</i>	Staghorn Cinquefoil	Mentasta	09PMC100	12/7/2009	95.39	70	17600	g	\$0.84	\$0.29		\$0.00
<i>Potentilla bimundorum</i>	Staghorn Cinquefoil	Mentasta	09PMC101	1/11/2010	99.83	93	4390	g	\$0.84	\$0.41	16	\$6.56
<i>Potentilla bimundorum</i>	Staghorn Cinquefoil	Mentasta	10PMC102	1/5/2011	99.33	59	4676	g	\$0.84	\$0.26		\$0.00
<i>Solidago multiradiata</i>	Northern Goldenrod	King Salmon	08PMC117	5/6/2011	95.71	72	542.04	g	\$0.84	\$0.30		\$0.00
<i>Solidago multiradiata</i>	Northern Goldenrod	King Salmon	09PMC127	8/24/2010	90.99	61	45.4	g	\$0.84	\$0.24		\$0.00
<i>Solidago multiradiata</i>	Northern Goldenrod	King Salmon	10PMC120	6/3/2011	97.74	42	320	g	\$0.84	\$0.18		\$0.00
<i>Solidago multiradiata</i>	Northern Goldenrod	King Salmon	10PMC116	6/3/2011	98.16	45	192.5	g	\$0.84	\$0.19	42	\$7.98
<i>Tripleurospermum maritima</i>	False Mayweed	Kotzebue	02F1TRPH02	8/2/2010	86.9	72	5838	g	\$0.84	\$0.28		\$0.00
<i>Tripleurospermum maritima</i>	False Mayweed	Kotzebue	04PMC21	8/2/2010	57.59	44	4954	g	\$0.84	\$0.11	88	\$9.68
<i>Tripleurospermum maritima</i>	False Mayweed	Kotzebue	10PMC111	6/1/2011	98.3	72	364.39	g	\$0.84	\$0.81		\$0.00
Grand Total:											\$25.87	

Showing 1 to 40 of 40 entries

Commercial growers can order seed online from the PMC website, at plants.alaska.gov/seedsale



Alaska Department of Environmental Conservation: Division of Environmental Health

Environmental Health Laboratory

The Alaska Environmental Health Lab (EHL) is one of the premier state-operated labs in the country. EHL employs the most current testing equipment and technology to provide higher capacity with faster results. The EHL can be an important team member for local agriculture, dairy, and meat producers.

EHL ensures that Alaska food product in industries with a regulatory compliance requirement meet safety standards. The lab is currently working to offer their expertise in testing manufactured food to local growers by expanding their services and capacity to analyze fresh and processed produce.

In the near future, local growers will be able to get their produce tested for bacterial pathogens such as *E. Coli*, *Salmonella*, and *Listeria*. These testing services will enable growers to meet the produce testing requirements of national food retailers.

Routinely demonstrating proficiency is a critical aspect of EHL's rigorous Quality Assurance program. EHL scientists routinely analyze performance evaluation samples submitted by various federal agencies to maintain certifications and ensure test results meet the highest standards of accuracy and precision. EHL is accredited by and subject to regular audits by agencies such as the U.S. Food and Drug Administration, U.S. Environmental Protection Agency, and U.S. Department of Agriculture.

One of the lesser known functions that EHL provides is the approval or certification of other labs. Any lab performing compliance testing on drinking water for the state's primacy of the Safe Drinking Water Act must be certified by the EHL. There is a similar approval process for laboratories analyzing samples as a part of the contaminated sites program. EHL also certifies on-site labs at many dairies throughout the state.

Additionally, the lab is the home of the Office of the State Veterinarian. The advanced necropsy facility enables the State Veterinarian to perform detailed examinations of animals in a controlled environment. With immediate access to advanced testing equipment and laboratory scientists the State Veterinarian is able to provide a very high level of customer service.

Environmental Health

Alaska Department of
Environmental Conservation

Dec.Alaska.gov/eh/

907-269-7501

Kristin Ryan
Director, Environmental Health
Kristin.Ryan@alaska.gov

Kim Stryker
Program Manager,
Food Safety & Sanitation
Kimberly.Stryker@alaska.gov

Karin Hendrickson
Program Coordinator,
Pesticide Control Program
Karin.Hendrickson@alaska.gov

Robert Gerlach
Alaska State Veterinarian
907-375-8214
Bob.Gerlach@alaska.gov

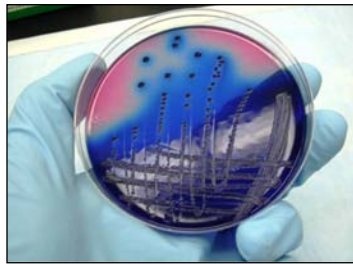


Photo: Alaska DEC

The Environmental Health Lab will soon offer testing services to local produce growers



Photo: Alaska DEC

The Alaska Environmental Health Laboratory, located on Dr. Martin Luther King Jr. Ave., Anchorage