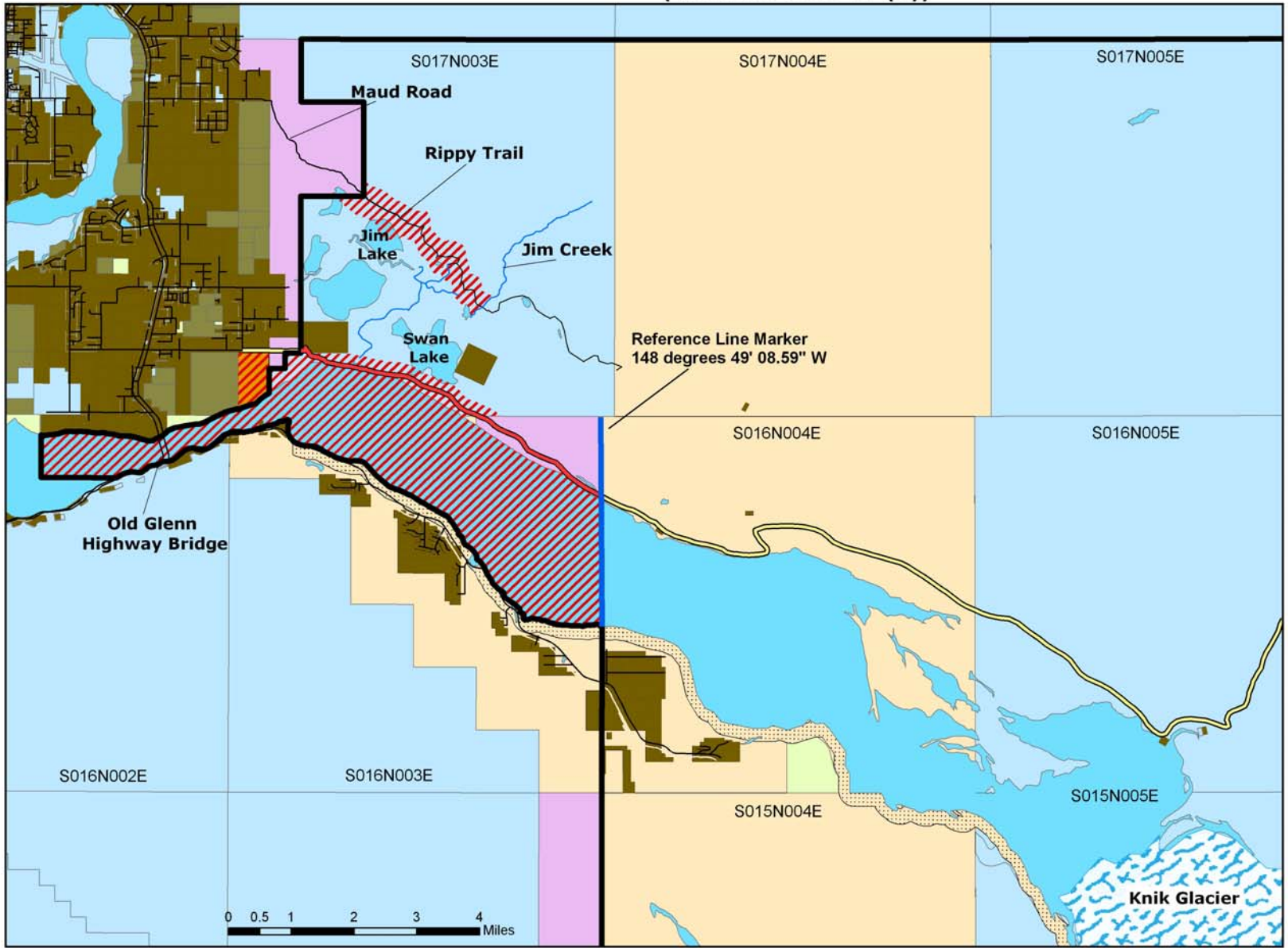


# Recreational Shooting Restrictions within the KRPUA & Knik River SUA (11 AAC 96.016 (c))



## Recreational Shooting Restrictions

- Shooting Restriction
- RS2477 Shooting Restriction

## Land Status / Boundaries

- KRPUA Legal Boundary
- State Land
- Knik River SUA
- Federal Land
- Eklutna Land
- Borough Land
- Private Land
- Mental Health Trust Land
- PLO 3324
- RS 2477



This map is for graphic representation only. It is intended to be used as a guide only and may not show the exact location of existing surveyed parcels or show all easements and reservations. Source documents remain the official record. Land status in general is only to section-level accuracy.

Prepared date: June 30, 2008  
DNR, DMLW.

