



Fred W. Wallis, P.E.
V.P. Engineering
Usibelli Coal Mine, Inc.
PO Box 1000
Healy, Alaska
99743
(907) 683-9740

December 14, 2015

Russell Kirkham
State of Alaska Department of Natural Resources
Division of Mining, Land, and Water
550 West 7th Avenue, Suite 900 D
Anchorage, Alaska 99501-2650

Re: Request for Bond Release-Gold Run Pass

Dear Mr. Kirkham,

Usibelli Coal Mine (UCM) is requesting Phase I bond release for 44 acres at the Gold Run Pass (GRP) Mine, Permit S-0602A. All applicable reclamation activities have been accomplished in accordance with the requirements of AS 27.21,11AC-90 and the approved reclamation plan. In the areas shown on the attached map, "GRP Phase I Bond Release 2015", final regrading is complete and drainages are established. The current bond for GRP Mine is \$999,025.

Release Amount= $\$999,025 \times (44/74) \times 60\% = \$355,474$

After bond release the final bond amount for GRP should be \$643,551. If you have any questions or concerns regarding this information, please contact me.

Sincerely,

Fred W. Wallis, P.E.
V.P. Engineering

THIS IS TO CERTIFY that on this 14th day of December, 2015, before me personally appeared Fred Wallis, V.P. Engineering, Usibelli Coal Mine, Inc., who executed this letter and voluntarily signed.

IN MY TESTIMONY WHEREOF, I have hereunto set my hand and affixed my official seal on the the day and year shown.

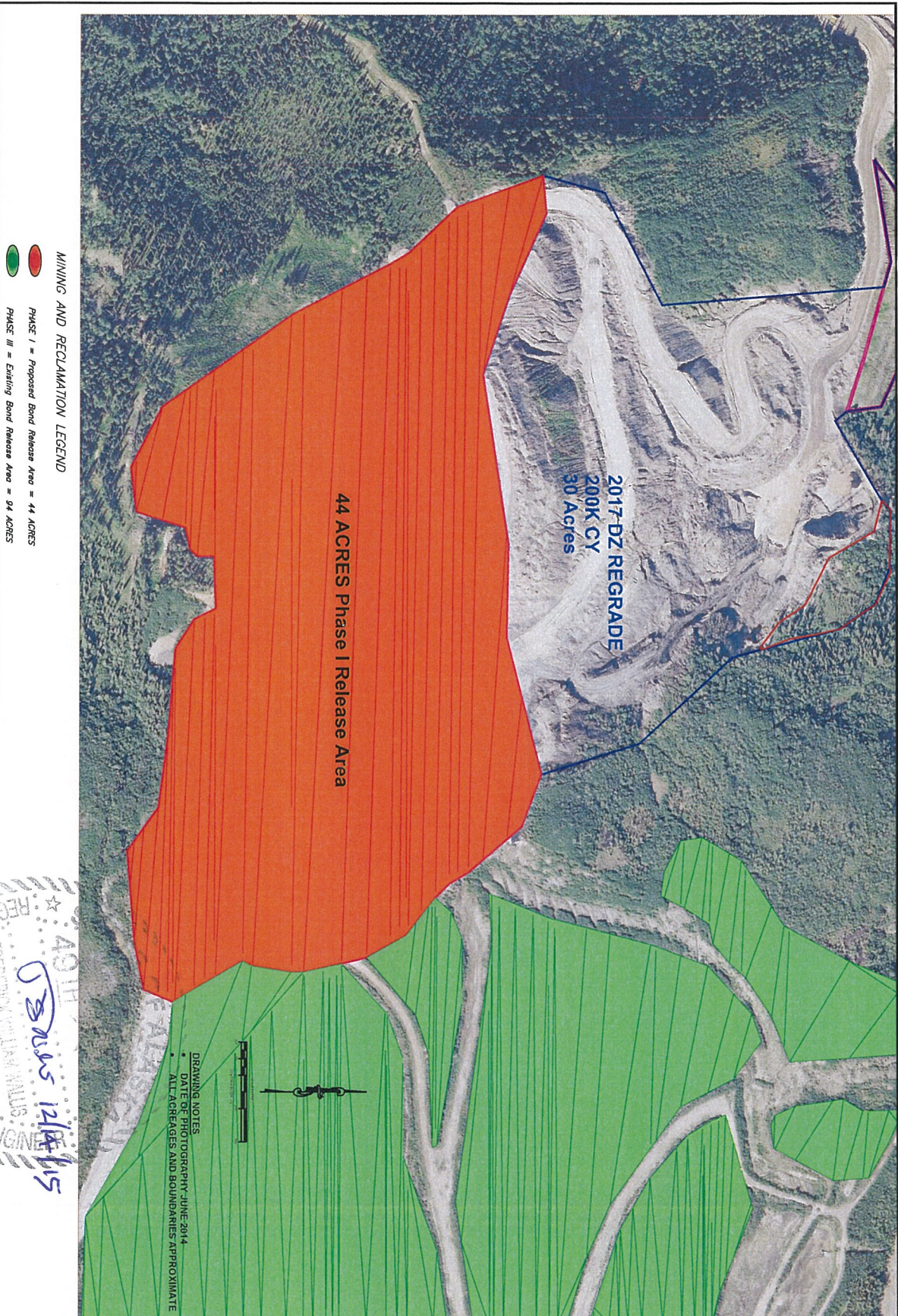
Notary Public in and for the State of Alaska

My commission expires

01/01/2016

Dated this 14th day of Decmeber, 2015





MINING AND RECLAMATION LEGEND
 PHASE I = Proposed Bond Release Area = 44 ACRES
 PHASE III = Existing Bond Release Area = 94 ACRES

44 ACRES Phase I Release Area

2017-DZ REGRADE
 200K CY
 30 Acres

DRAWING NOTES
 DATE OF PHOTOGRAPHY: JUNE 2014
 ALL AREAS AND BOUNDARIES APPROXIMATE



EM - 9873
 12/14/15
 PROFESSIONAL MINING ENGINEER

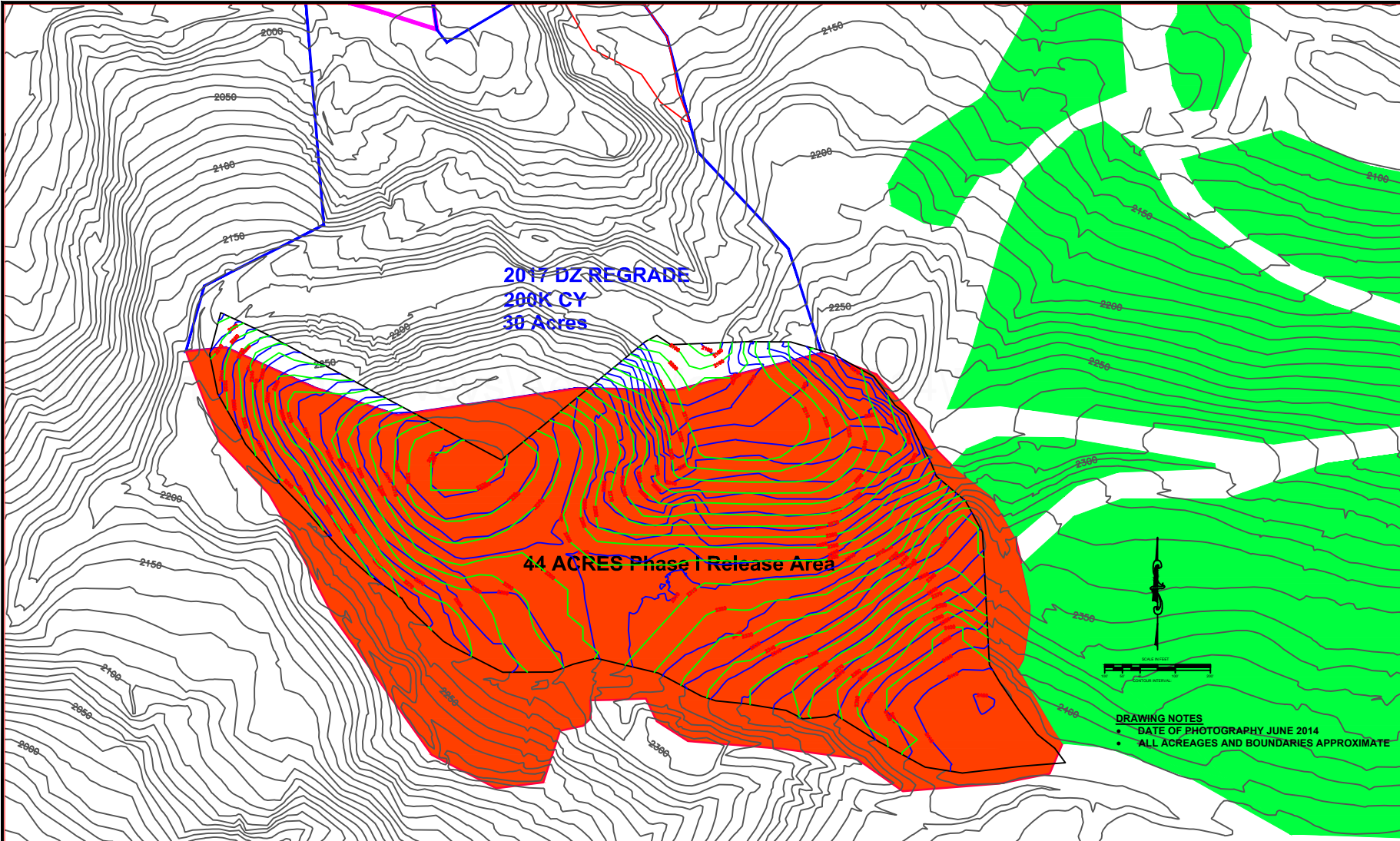
FILE NO.	PROJECT NO.	DATE	BY

GRP PHASE I BOND RELEASE 2015

GOLD RUN PASS MINE PERMIT S-0602A

DATE	DESCRIPTION	BY
05/16	ORIGINAL MAP	





DATE	BY	CHKD	REV





ORIGINAL MAP
10/15

GOLD RUN PASS MINE
PERMIT S-0602A

PROJECT

GRP PHASE I BOND
RELEASE 2015
PMT VS Regraded Topo

MINING AND RECLAMATION LEGEND

-  PHASE I = Proposed Bond Release Area = 44 ACRES
-  PMT Topography
-  PHASE III = Existing Bond Release Area = 94 ACRES
-  1-10-16 Regraded Topography

PROJECT No.		
FILE No.		
REV.	SCALE	AS NOTED
DESIGN	RCS	12/15
CADD	RCS	12/15
CHECK		
REVIEW		