

Tailings Area Sampling Sites Shallow Wells



WEST

NORTH

EAST



EAST

SOUTH

WEST



Tailings Area Sampling Sites Shallow Wells



Tailings Area Sampling Sites Deep Wells



Tailings Area Sampling Sites Deep Wells



Tailings Area Sampling Sites

Surface Sites

WEST

NORTH

EAST



EAST

SOUTH

WEST



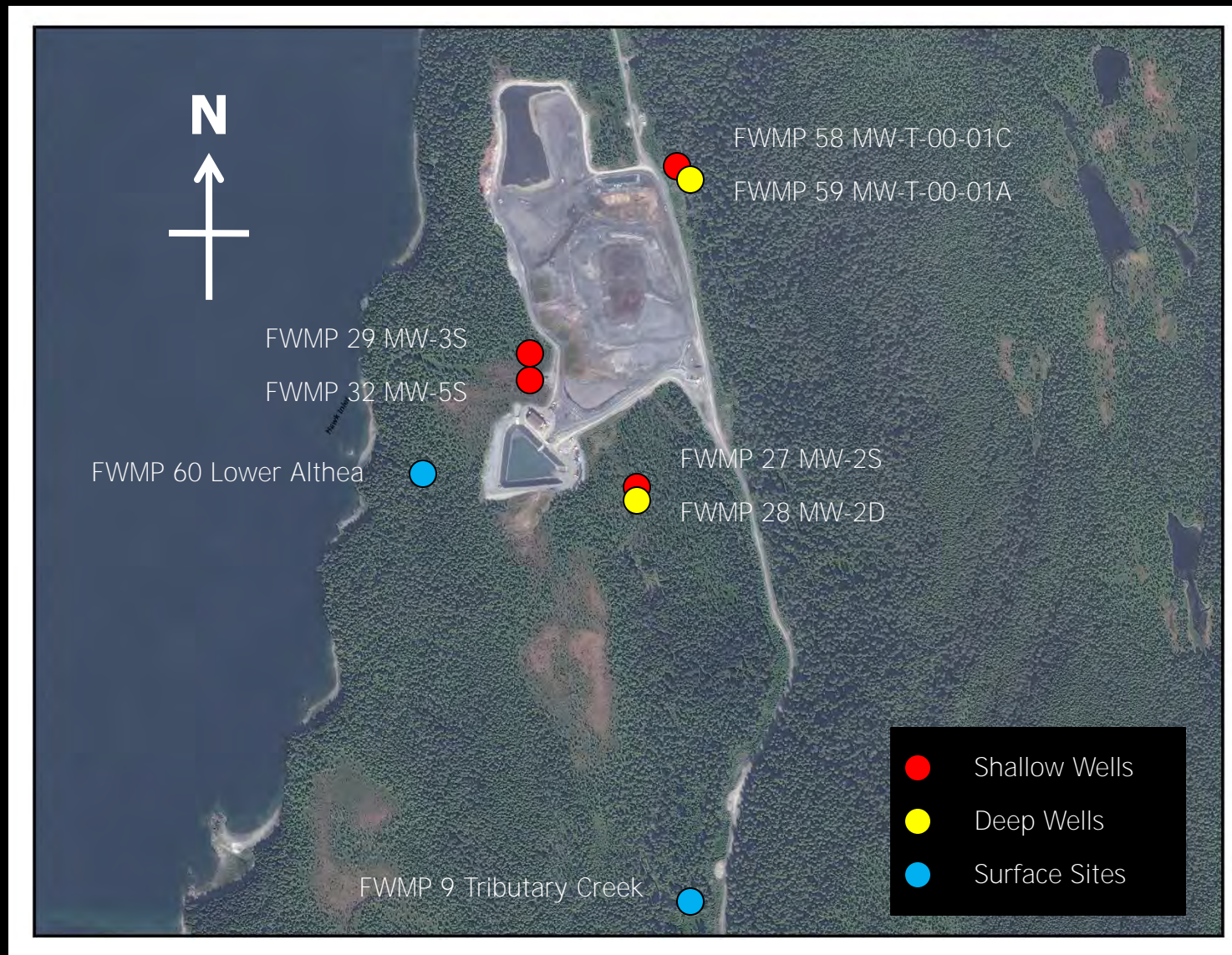
Tailings Area Sampling Sites

Surface Sites



Tailings Area Sampling Sites

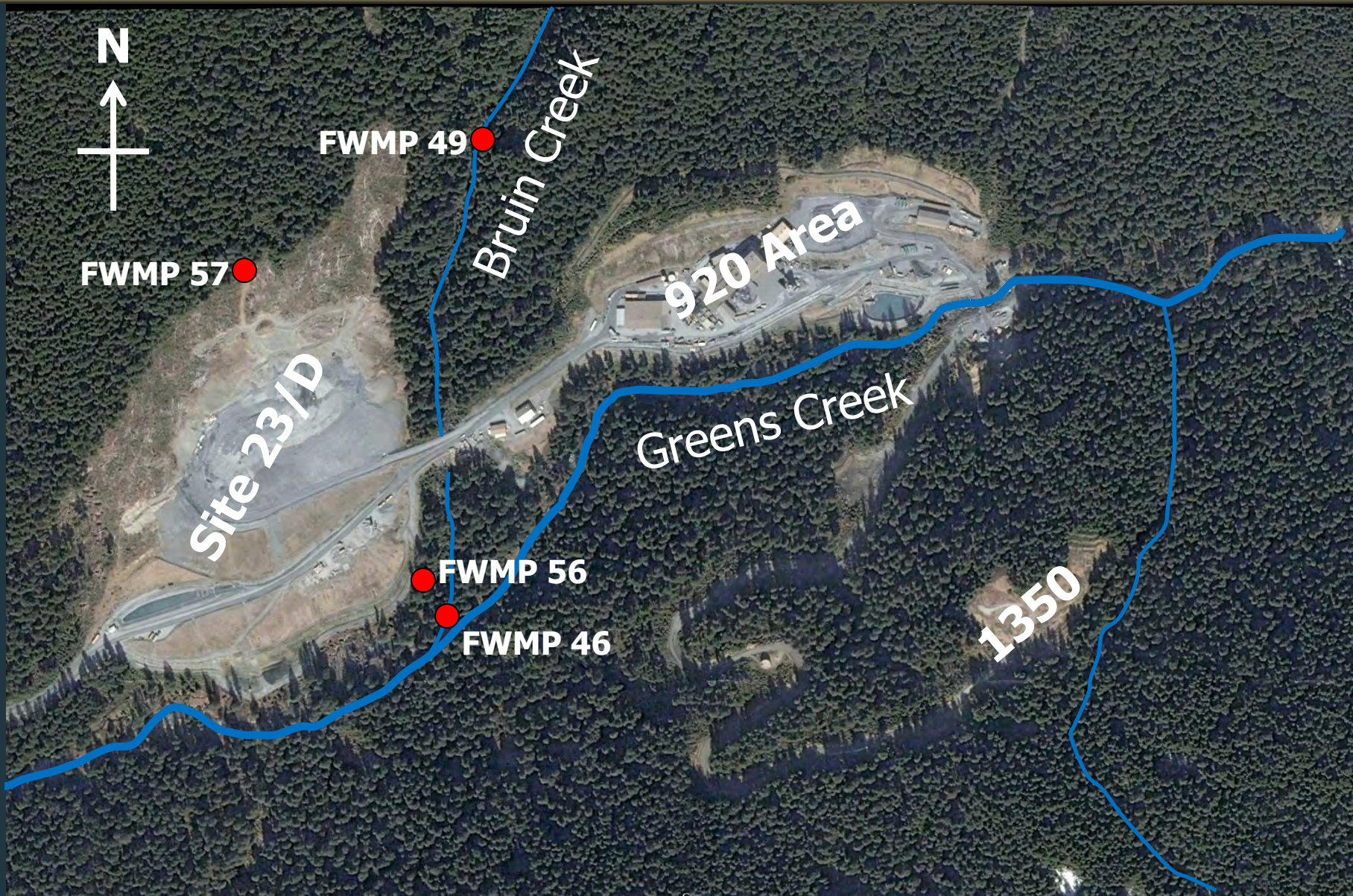
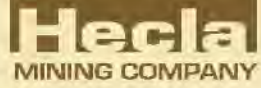
Surface Sites



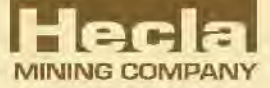
Greens Creek & 1350 Sampling Sites



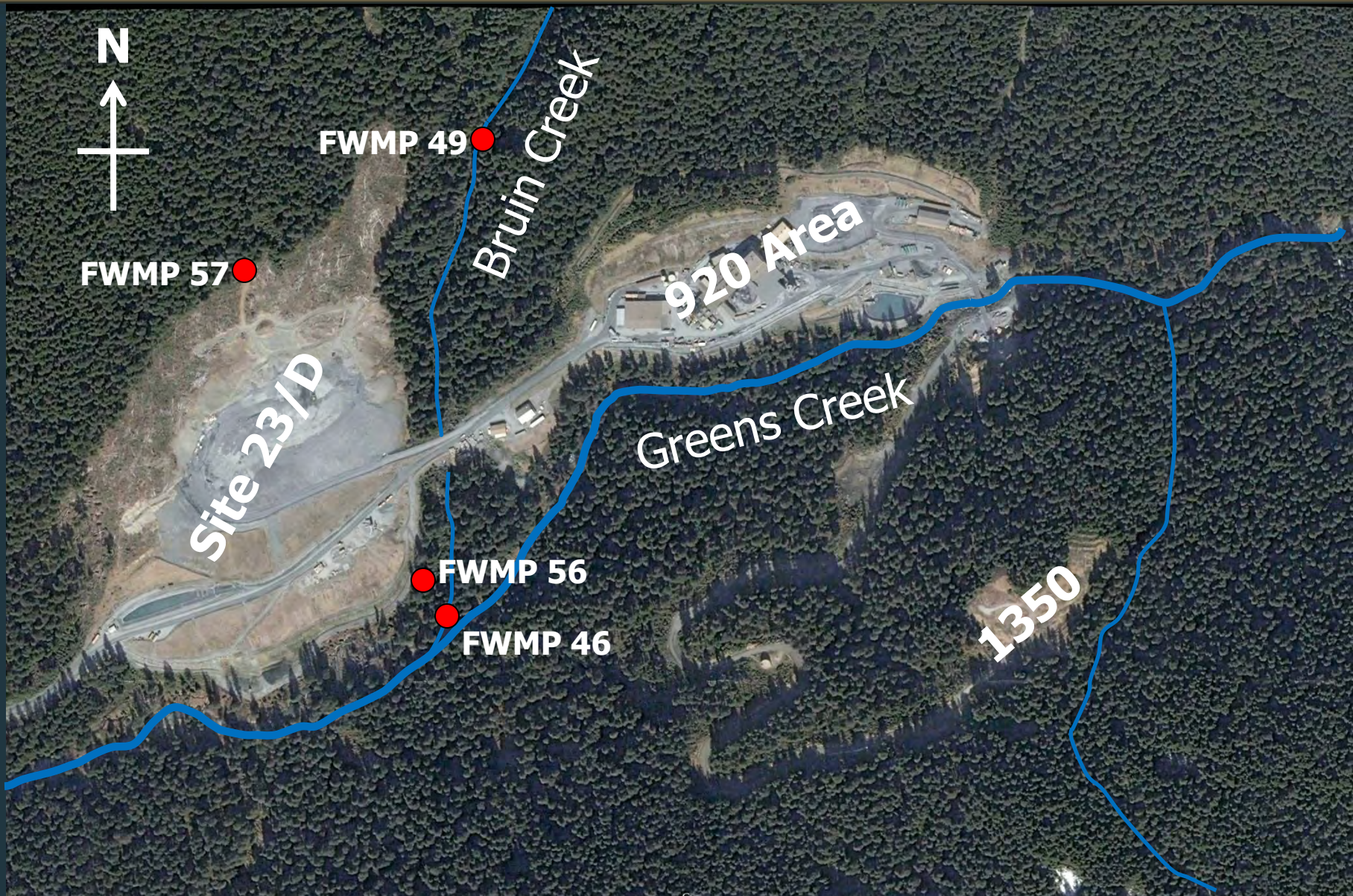
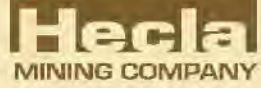
Bruin Creek & Site 23/ D Sampling Sites



Greens Creek & 1350 Sampling Sites



Bruin Creek & Site 23/ D Sampling Sites



Tailings Area Sampling Sites

Surface Sites

WEST

NORTH

EAST



EAST

SOUTH

WEST



Tailings Area Sampling Sites Shallow Wells

WEST

NORTH

EAST



FWMP 58 MW-T-00-01C

EAST

SOUTH

WEST



FWMP 27 MW-2S

FWMP 32 MW-5S

FWMP 29 MW-3S

Tailings Area Sampling Sites Deep Wells



Tailings Area Sampling Sites

