

**LEGEND OF FEATURES**

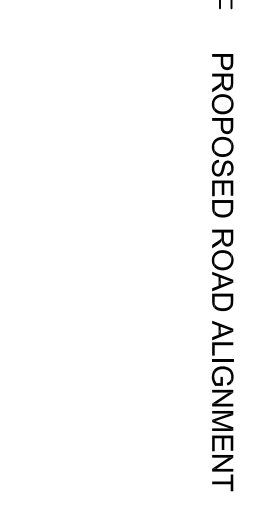
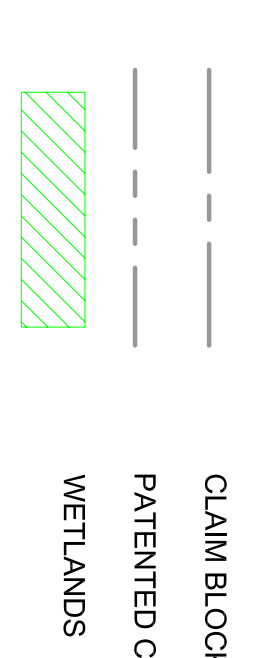
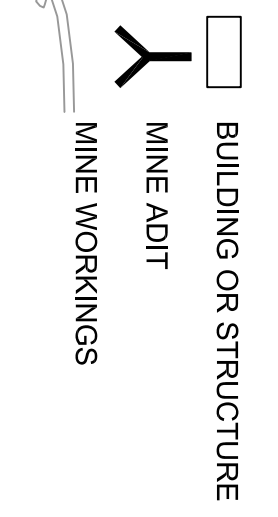
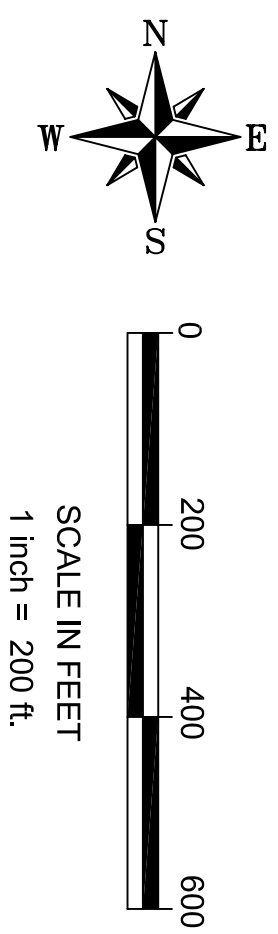
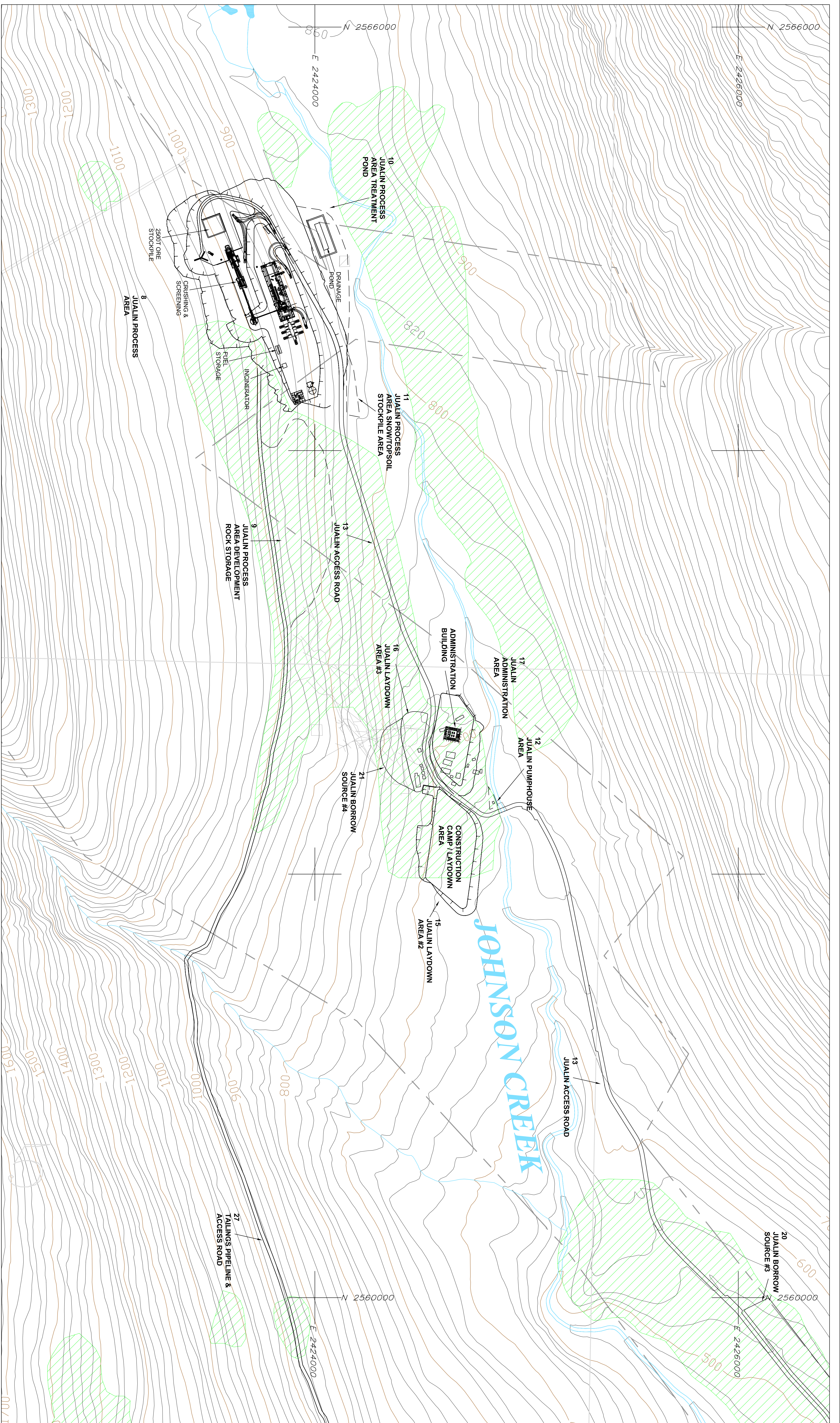
- EXISTING ROAD
- BUILDING OR STRUCTURE
- MINE ADIT
- MINE WORKINGS
- CLAIM BLOCK OUTLINE
- PATENTED CLAIMS
- WETLANDS

**DRAWING 2A**

COEUR  
KENSINGTON GOLD PROJECT AREA - PROPOSED FACILITIES  
COMET BEACH/KENSINGTON PORTAL  
BERNERS BAY, ALASKA

SCALE: 1"=400 FT | FILE: Kensington\_2\_Proposal\_Apr2005.dwg  
DATE: APRIL 2005 | DRAWN: JASPER GEODATA/PHICS

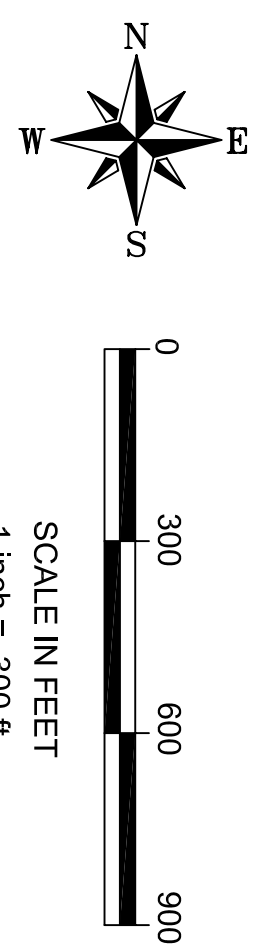
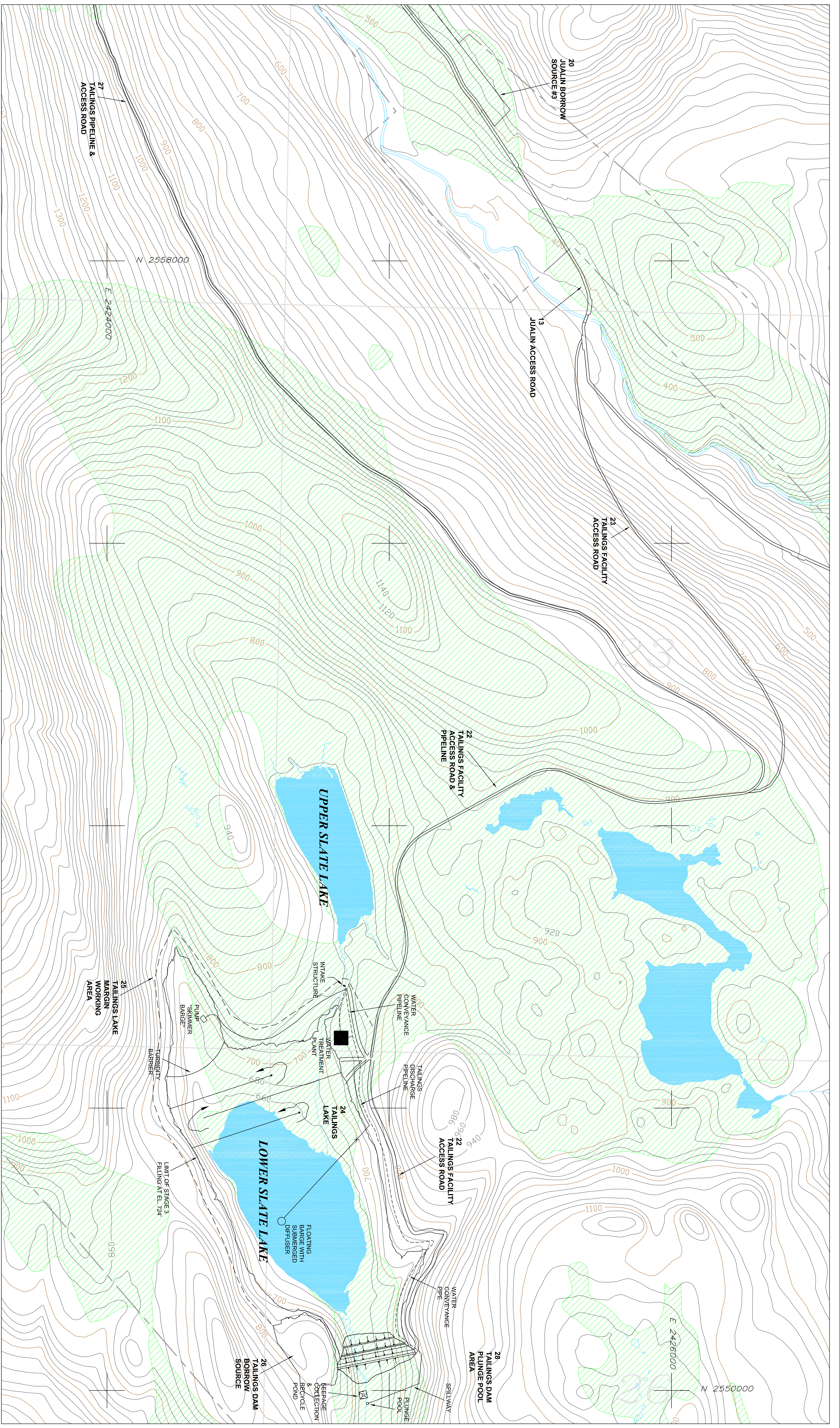





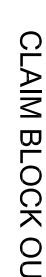
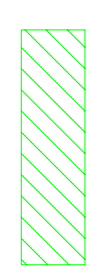
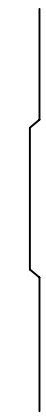
**LEGEND OF FEATURES**

	SCALE: 1"=200FT	FILE: Kennington_2_Proposal_Apr2005.dwg
	DATE: APRIL 2005	DRAWN: JASPER GEORGE/PAHCS
	<b>DRAWING 2B</b>	
	KENSINGTON GOLD PROJECT AREA - PROPOSED FACILITIES JUALIN PORTAL/ADMINISTRATION AREA BERNERS BAY, ALASKA	





**LEGEND OF FEATURES**

-  CLAIM BLOCK OUTLINE
-  PATENTED CLAIMS
-  WETLANDS
-  PROPOSED ROAD ALIGNMENT

**DRAWING 2C**

SCALE: 1"=300FT | FILE: Kensington\_2\_Proposal\_Apr2005.dwg  
 COEUR | DATE: APRIL 2005 | DRAWN: JASPER GEORGAKAPAKIS  
 KENNINGTON GOLD PROJECT AREA-PROPOSED FACILITIES  
 LOWER SLATE LAKE TAILINGS FACILITY  
 BERNERS BAY, ALASKA



