



Pebble Project

NORTHERN DYNASTY MINES INC.

DRAFT ENVIRONMENTAL BASELINE STUDIES PROPOSED 2007 STUDY PLANS

CHAPTER 18. SOCIOECONOMICS

DRAFT

SEPTEMBER 2007

TABLE OF CONTENTS

TABLE OF CONTENTS 18-i
LIST OF TABLES 18-i
LIST OF FIGURES 18-i
18. SOCIOECONOMICS 18-1

LIST OF TABLES (attached)

Table 18-1, Study Summary for Socioeconomics, 2005-2007

LIST OF FIGURES (attached)

Figure 18-1, Study Area, Socioeconomic Baseline Description

18. SOCIOECONOMICS

The McDowell Group, supported by Kevin Waring Associates, will develop the description of the socioeconomic environment for the Pebble Project. As appropriate, this effort will be coordinated with related aspects of the environmental baseline studies for subsistence, land use, and recreation. Table 18-1 summarizes work for the socioeconomic study in 2005 through 2007. Figure 18-1 depicts the socioeconomic study area.

The objective for the socioeconomic baseline study remain as described in the 2005 study plan and 2006 addendum—that is, to describe the baseline socioeconomic conditions in the study area as a basis for assessing the impacts of various alternatives for project development and operation on the socioeconomic environment. The study area and methods for 2007 also are as described in the 2005 study plan and 2006 addendum.

The major tasks and activities remain generally as described in the 2005 study plan and 2006 addendum. The scope of the baseline description, however, will be revised to reflect the most current socioeconomic conditions and to incorporate newly available annual data series.

The 2007 study will update the baseline information and analysis for the Bristol Bay study area (including Iliamna Lake/Lake Clark communities and Nushagak/Bristol Bay Borough communities) to incorporate the following:

- Senior review edits and recommendations for revisions, and new scope or data.
- 2006 population and demographic data and trends.
- 2006 workforce, employment, and unemployment figures.
- Most recent earnings and income data.
- Updated information on commercial fishing activity.
- 2006 public assistance payments.
- 2006 household subsistence-survey data related to demographics and economics (incorporating research performed by the Alaska Department of Fish and Game).
- Current commercial fishing/seafood processing, visitor, and government sectors.
- Capital improvement spending for fiscal year 2006/2007.
- Recent changes in community infrastructure.
- Current local governmental organization, services, and finances.
- Most recent community energy and regional transportation services and costs.

The 2007 study plan also includes developing a health and social indicators baseline for the Iliamna Lake/Lake Clark communities. This baseline will include a broad range of indicators, including deaths, births, health status, family violence, crime, and educational achievement.

The 2007 study will update the baseline information and analysis for the Cook Inlet study area (including the Kenai Peninsula Borough, Matanuska-Susitna Borough, and Anchorage) to incorporate the following:

- Senior review edits and recommendations for revisions, and new scope or data.
- 2006 population and demographic data and trends.
- 2006 workforce, employment, and unemployment figures.
- Most recent earnings and income data.

TABLE

TABLE 18-1
Pebble Project Environmental Studies
Study Summary for Socioeconomics, 2005-2007
Consultant: McDowell Group/Kevin Waring Associates

Discipline	2005 Data Collected or Tasks	2006 Data Collected or Tasks	2007 Tasks to be Completed
Socioeconomics	2005 Study Plan	2006 Study Plan Summary	2007 Study Plan Summary
	Compile and analyze information on population characteristics	Update data baseline to incorporate most current information and analysis into 2005 baseline data	Update baseline data to incorporate most current information and analysis into 2006 baseline data
	Document historic and current economic conditions, including employment and unemployment, and earned and unearned income		Research, analyze, and incorporate health and social indicators baseline information
	Prepare profiles of major industries, including commercial fishing/processing, tourism, government	Begin draft socioeconomic baseline description	Complete draft socioeconomic baseline description
	Design and conduct local labor-force survey of manpower skills, employment interest, and mobility		
	Collect information for profiles of community infrastructure		
	Describe the structure, powers, and finances of local governance institutions		
	Describe regional transportation facilities, services, and costs		
	Describe provisions for supply and cost of community electric power and petroleum fuels		

FIGURE

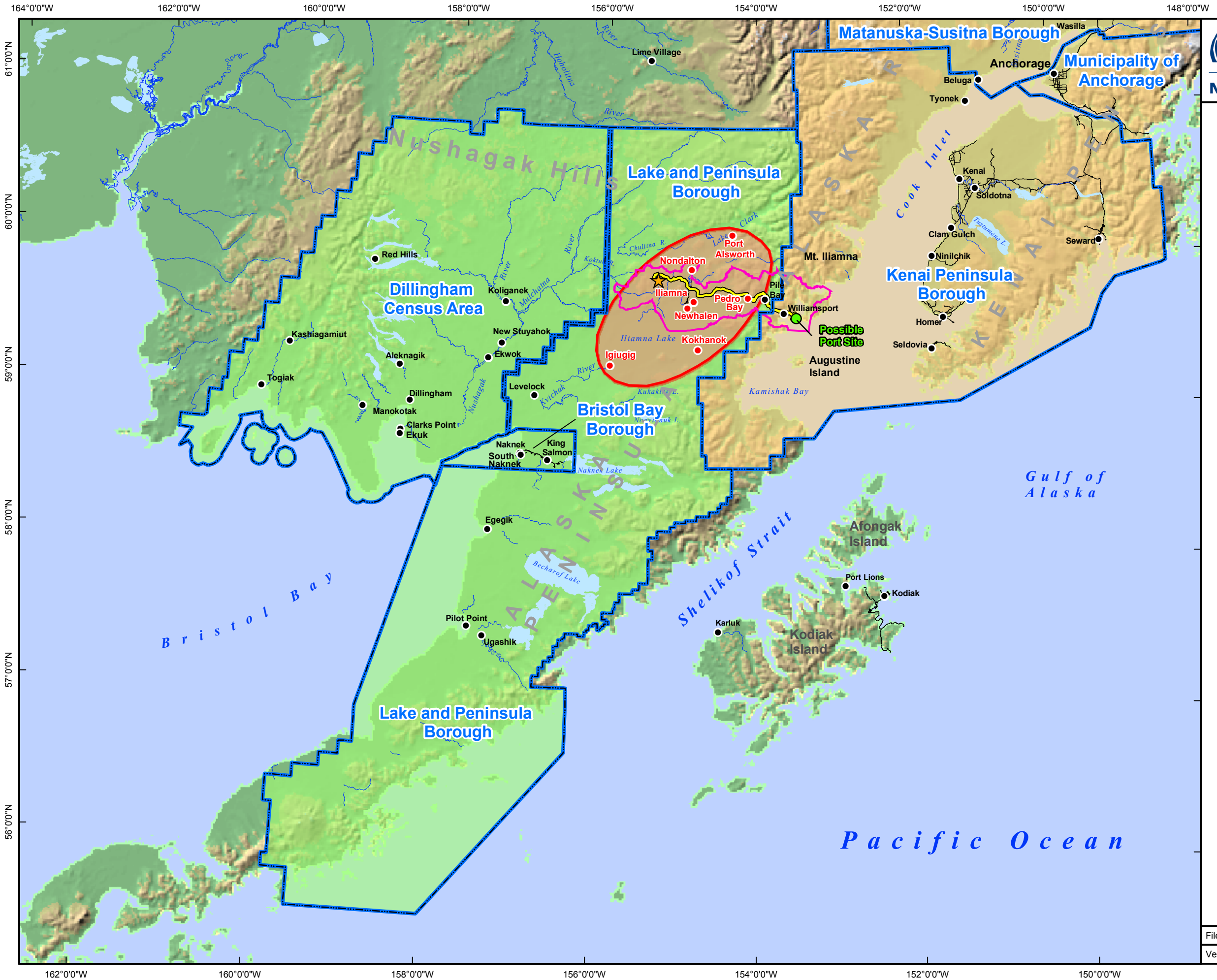
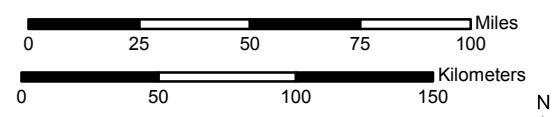
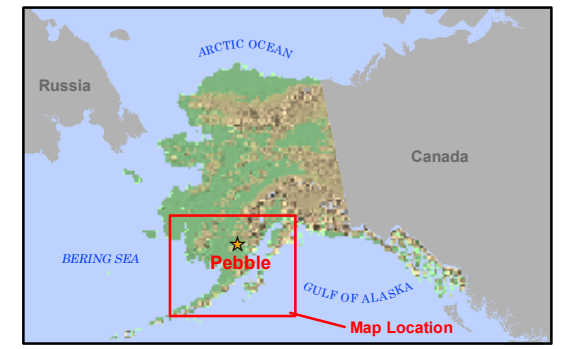


Figure 18-1
 Study Area
 Socioeconomic Baseline Description
DRAFT

- Legend**
- Iliamna Lake/Lake Clark Communities
 - Pebble Project Vicinity
 - Cook Inlet Study Area
 - Bristol Bay Study Area
 - General Pit Location
 - Possible Road
 - Possible Port Site
 - Existing Roads



Scale 1:2,750,000
 Alaska State Plane Zone 5 (units feet)
 1983 North American Datum