



Pre-Permitting Environmental / Socio-Economic Data Report Series

Report Series D- Groundwater Hydrology Figures

Report D-1 (Figures) Well, Piezometer, and Drillhole Site Plans

Submitted to the Pebble Limited Partnership June 2008

Preliminary data. Do not cite or quote.

The Pebble Partnership is providing environmental and socio-economic baseline data collected to inform the development of the Pebble Project to state and federal agencies, project stakeholders and the general public prior to project permitting as part of its commitment to full and open disclosure.

A comprehensive Environmental Baseline Document (EBD) will subsequently be prepared and appended to future project permit applications. The EBD will also be made publicly available when complete.

**PRE-PERMITTING
ENVIRONMENTAL SOCIOECONOMIC DATA
REPORT SERIES**

**REPORT SERIES D:
GROUNDWATER HYDROLOGY**

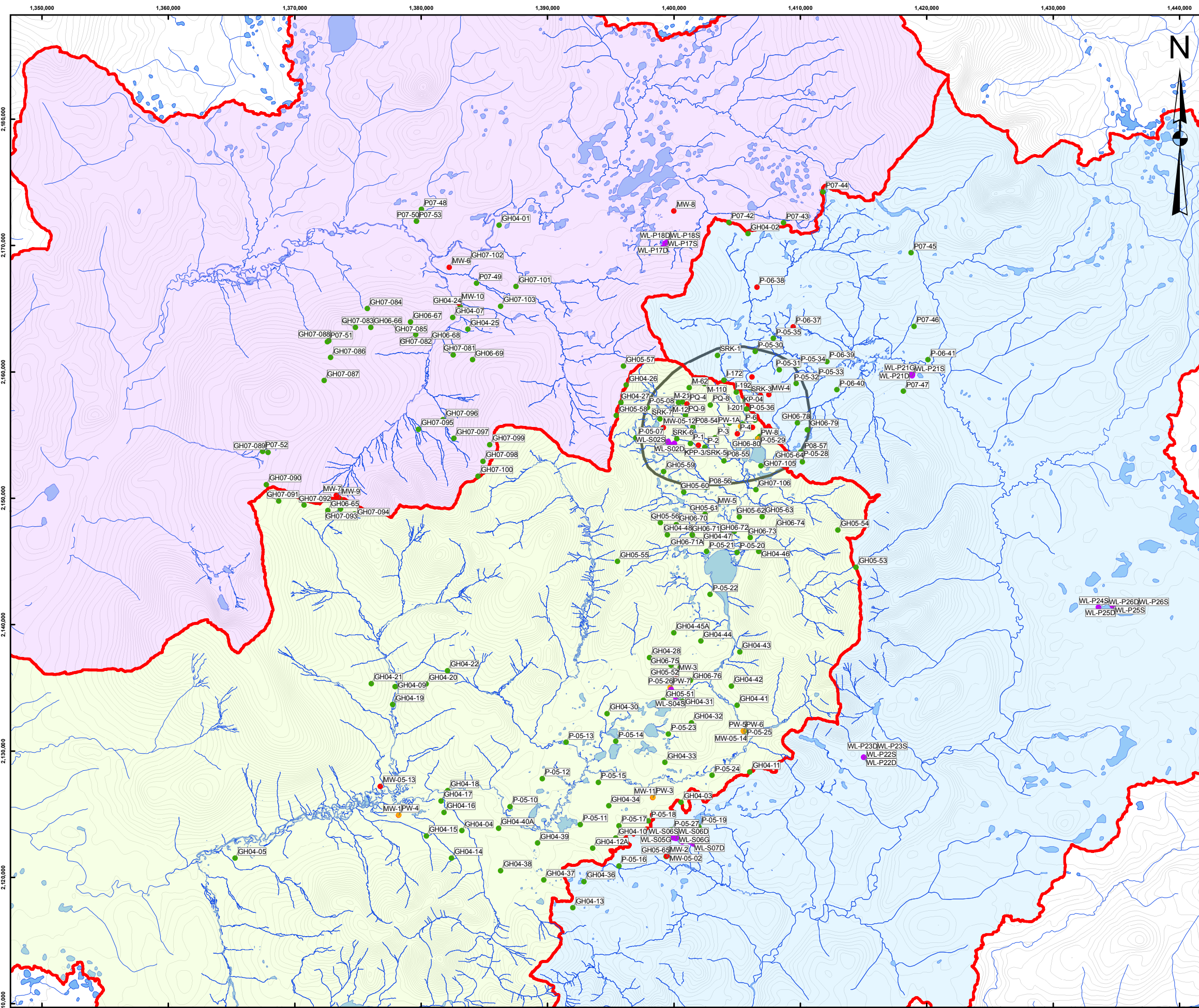
**SECTION 1 –
WELL, PIEZOMETER, AND DRILLHOLE SITE
PLANS**

Pebble Data Report - Section 1
Well, Piezometer, and Drillhole Site Plans

Table of Contents

Well, Piezometer, and Drillhole Site Plans:

Site Plan	1
Pit Detail Plan	2



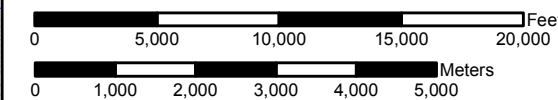
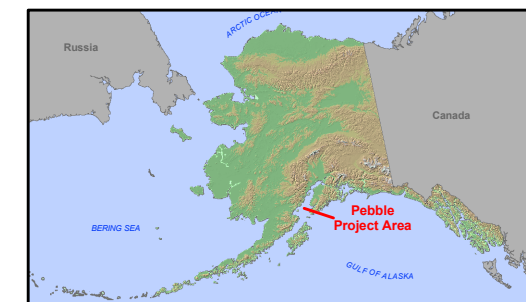
Pre-permitting
Environmental/Socioeconomic
Data Report Series

Report Series D:
Groundwater Hydrology

Site Plan

Legend

- General Deposit Location
- Wetland Piezometer (WL)
- Monitoring Well (MW)
- Piezometer (P, GH, I, M)
- Pumping Well (PW)
- North Fork Kaktuli River
- South Fork Kaktuli River
- Upper Talarik Creek
- Lakes
- Rivers
- 50-ft Contour Interval



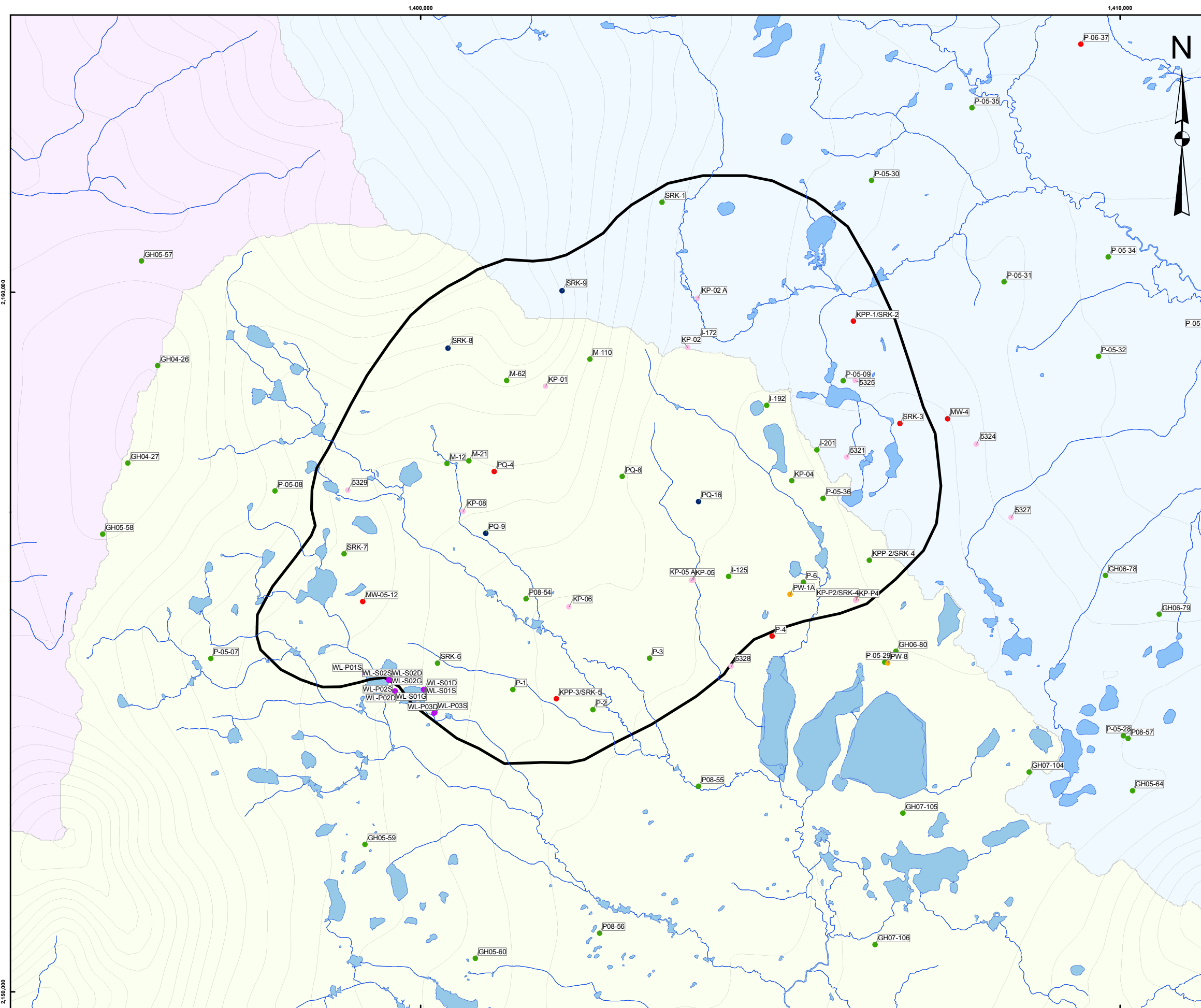
Scale 1:94,231
Alaska State Plane Zone 5 (units feet)
1983 North American Datum

Project No: 7126

Date: June 16, 2008

Version: 1

Author: WMC-LC



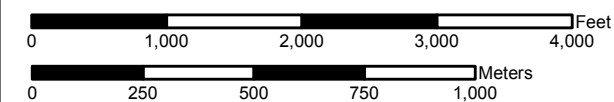
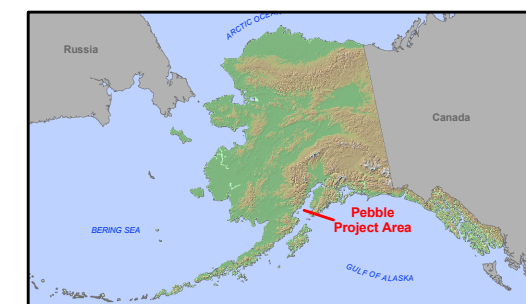
Pre-permitting
Environmental/Socioeconomic
Data Report Series

Report Series D:
Groundwater Hydrology

Pit Detail Plan

Legend

- Wetland Piezometer (WL)
 - Monitoring Well (MW)
 - Piezometer (P, GH, I, M)
 - Pumping Well (PW)
 - Open Pit Geotechnical/NDM Exploration Drillhole
 - Other Geotechnical Drillhole
 - General Deposit Location
- Watershed**
- North Fork Kaktuli River
 - South Fork Kaktuli River
 - Upper Talarik Creek
 - Lakes
 - Rivers
 - 50-ft Contour Interval



Scale 1:17,056
Alaska State Plane Zone 5 (units feet)
1983 North American Datum

Project No: 7126
Version: 1

Date: June 16, 2008
Author: WMC-LC