



Pre-Permitting Environmental / Socio-Economic Data Report Series

Report Series D- Groundwater Hydrology Figures

Report D- 4 (Figures) Geotechnical Response Test Figures 2004, 2005, 2006, 2007

Submitted to the Pebble Limited Partnership June 2008

Preliminary data. Do not cite or quote.

The Pebble Partnership is providing environmental and socio-economic baseline data collected to inform the development of the Pebble Project to state and federal agencies, project stakeholders and the general public prior to project permitting as part of its commitment to full and open disclosure.

A comprehensive Environmental Baseline Document (EBD) will subsequently be prepared and appended to future project permit applications. The EBD will also be made publicly available when complete.

**PRE-PERMITTING
ENVIRONMENTAL SOCIOECONOMIC DATA
REPORT SERIES**

**REPORT SERIES D:
GROUNDWATER HYDROLOGY**

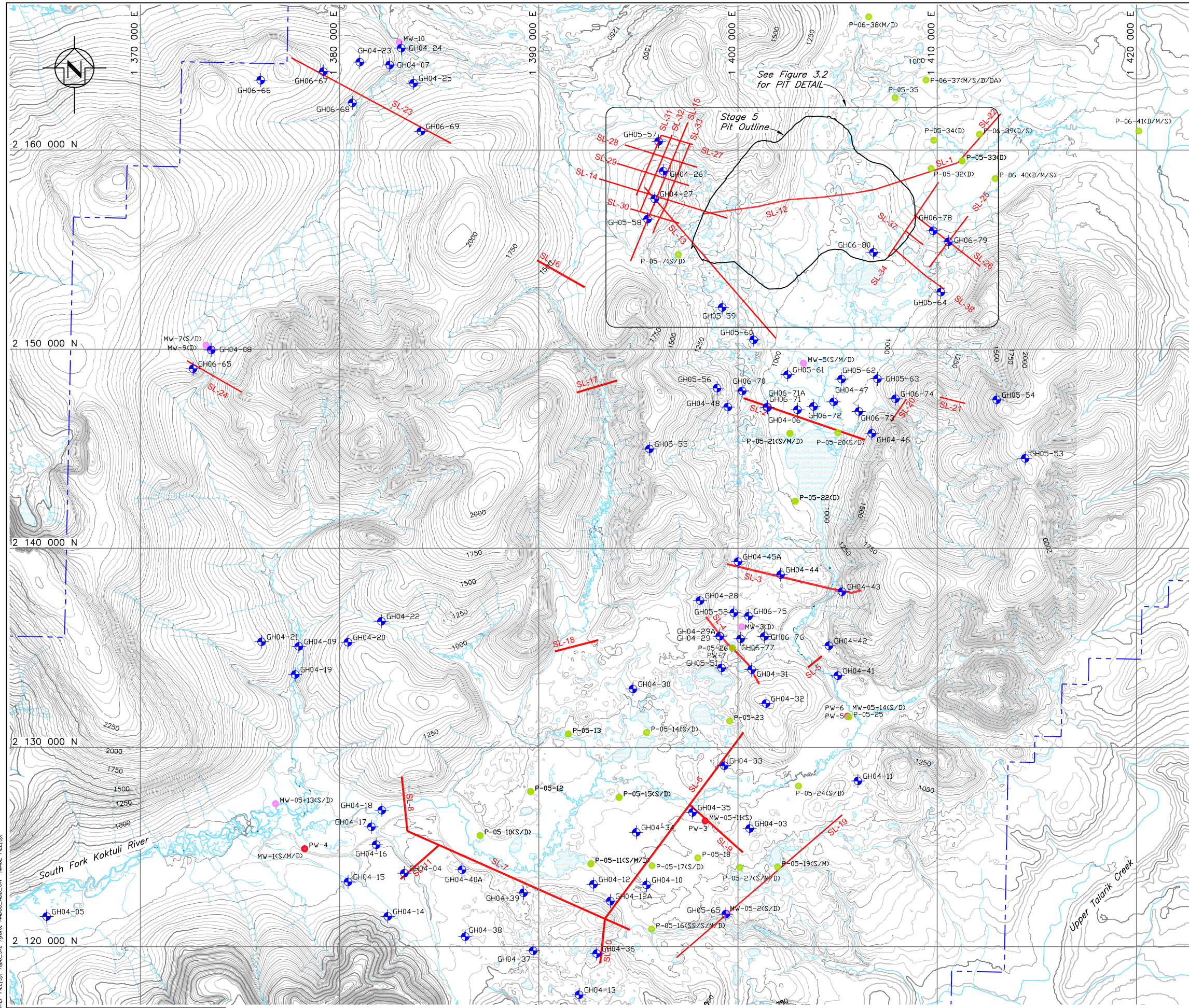
**SECTION 4 – GEOTECHNICAL RESPONSE
TEST FIGURES**

Pebble Data Report - Section 4
Geotechnical Response Test Figures

Table of Contents

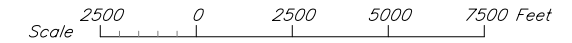
Geotechnical Response Test Figures:

Geotechnical Drillhole Location Plan	1
Pit Detail Plan	2



- LEGEND**
- NDM Mineral Claim Boundary
- KP**
- GH04-1 Geotechnical Drillhole Completed in 2004
 - GH05-51 Geotechnical Drillhole Completed in 2005
 - GH06-65 Geotechnical Drillhole Completed in 2006
 - KP-02 Open Pit Geotechnical Drillhole / NDM Exploration Drillhole
- WMC / SLR**
- P-1 Completed Piezometer
 - PW-1 Completed Pumping Test Location
 - MW-1 Completed Baseline Monitoring Wells
- FRONTIER**
- SL-1 Seismic Line
- OTHER**
- ⊕ SRK-1 Other Geotechnical Drillhole

- NOTES**
1. Piezometers installed in all 2006 KP Geotechnical Drillholes excluding GH06-71, GH06-73, and GH06-79.
 2. Stage 5 Pit Outline, March 2006, provided by NDM.
 3. The following seismic lines were completed in 2006: SL-22 to SL-34 and SL-37 to SL-38.
 4. See FIGURE 3.2 for drillholes in the pit area.



NORTHERN DYNASTY MINES INC.		
PEBBLE PROJECT		
GEOTECHNICAL DRILLHOLE LOCATION PLAN		
Knight Piésold CONSULTING	PROJECT/ASSIGNMENT NO. VA101-176/8	REF. NO. 9
FIGURE 3.1		REV. 0

REF FILES: Topo_Site; Hygro; MODS_A02; ON IMAGE FILES:

VANCOUVER B.C. SAVED: M:\1\01\00176\05\VA\Acad\Figs\B111_3\13/2008 5:54:21 PM Layout: Inhamon PRINTED: 3/25/2008 5:54:21 PM

XREF FILE(S): Topo_5ft; Hydro IMAGE FILE(S):

