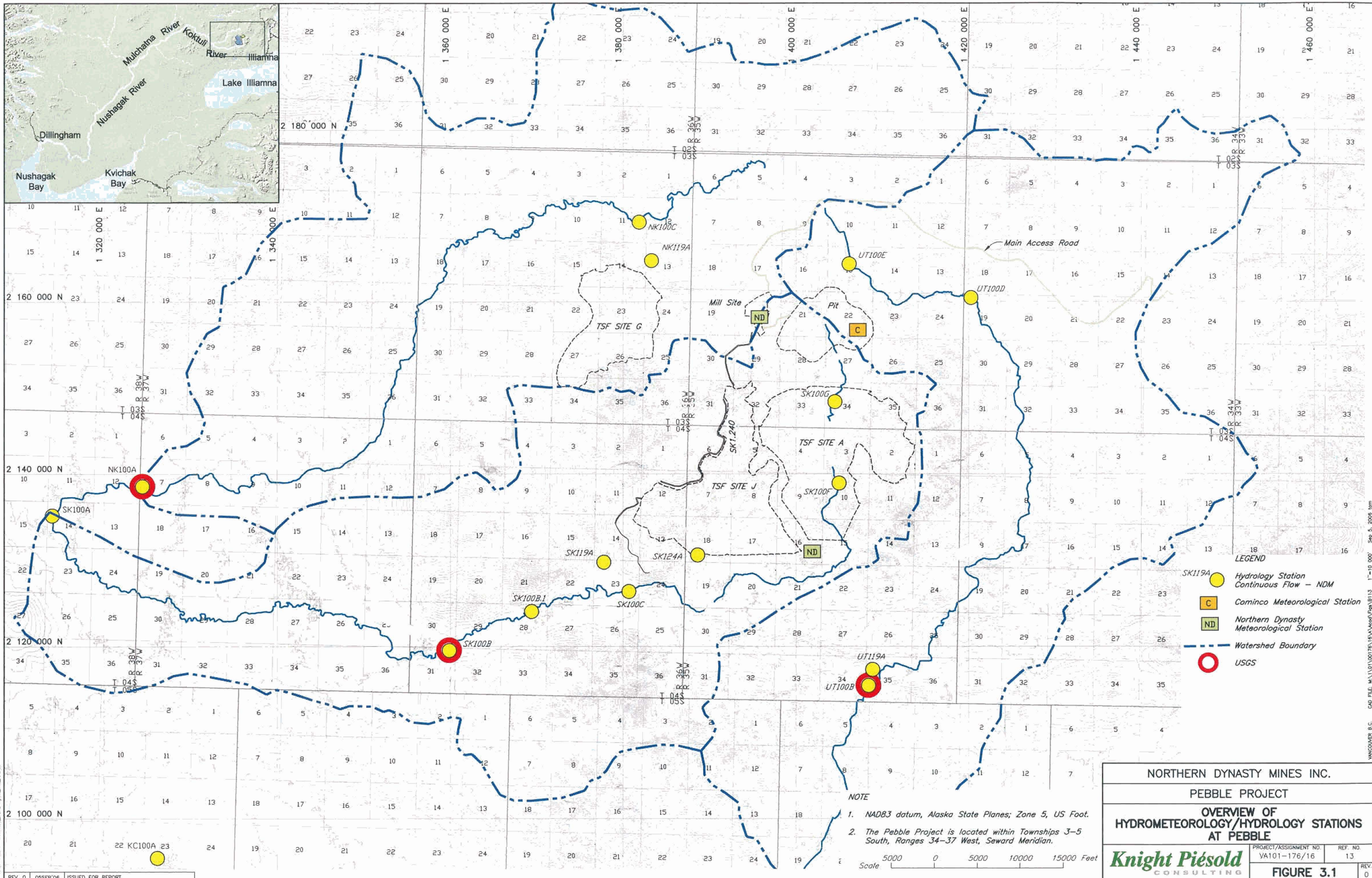


CANADIAN B.C. CAD FILE # 11\01\00176\16\VA\res\Map\Fig-1-1(FS). AUG 30, 2006

XREF FILE : IMAGE - Location.TIF

NORTHERN DYNASTY MINES INC.			
PEBBLE PROJECT			
PROJECT LOCATION			
<i>Knight Piésold</i> CONSULTING		PROJECT/ASSIGNMENT NO. VA101-176/16	REF. NO. 13
		FIGURE 1.1	
REV. 0	05SEP06	ISSUED FOR REPORT	REV. 0



- LEGEND**
- Hydrology Station
Continuous Flow – NDM
 - C Cominco Meteorological Station
 - ND Northern Dynasty
Meteorological Station
 - Watershed Boundary
 - USGS

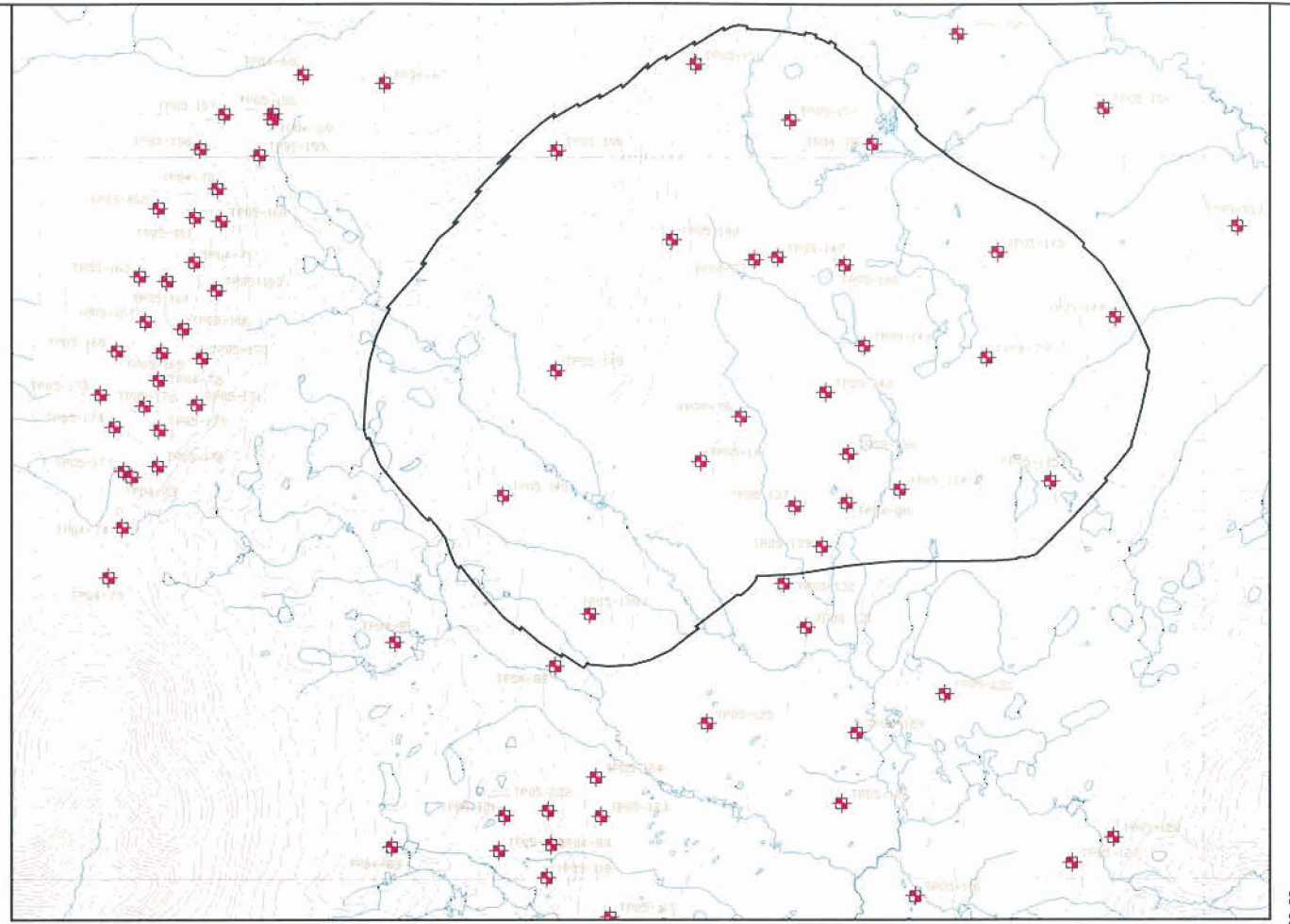
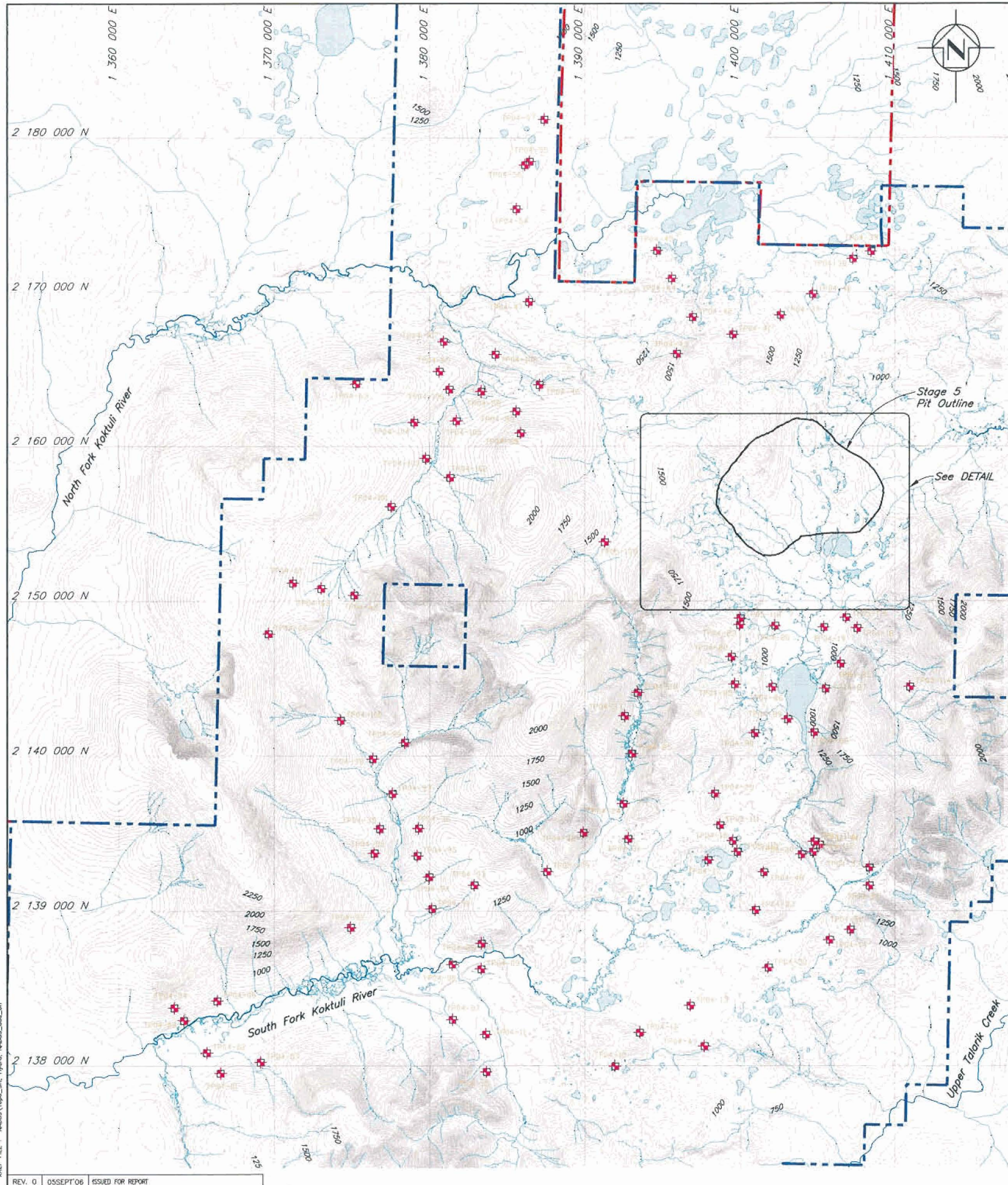
NOTE

1. NAD83 datum, Alaska State Planes; Zone 5, US Foot.
2. The Pebble Project is located within Townships 3–5 South, Ranges 34–37 West, Seward Meridian.

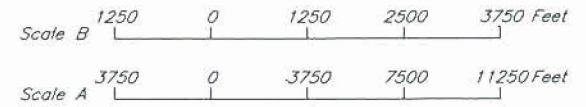
Scale 5000 0 5000 10000 15000 Feet

NORTHERN DYNASTY MINES INC.	
PEBBLE PROJECT	
OVERVIEW OF HYDROMETEOROLOGY/HYDROLOGY STATIONS AT PEBBLE	
PROJECT/ASSIGNMENT NO. VA101-176/16	REF. NO. 13
FIGURE 3.1	
REV. 0	

W:\COVER\B.C. CAD FILE: M:\10100176\16\VA\Asset\Fig\B113 1"=10,000' Sep 5, 2006 10m



PIT AND MILL SITE DETAIL
Scale B



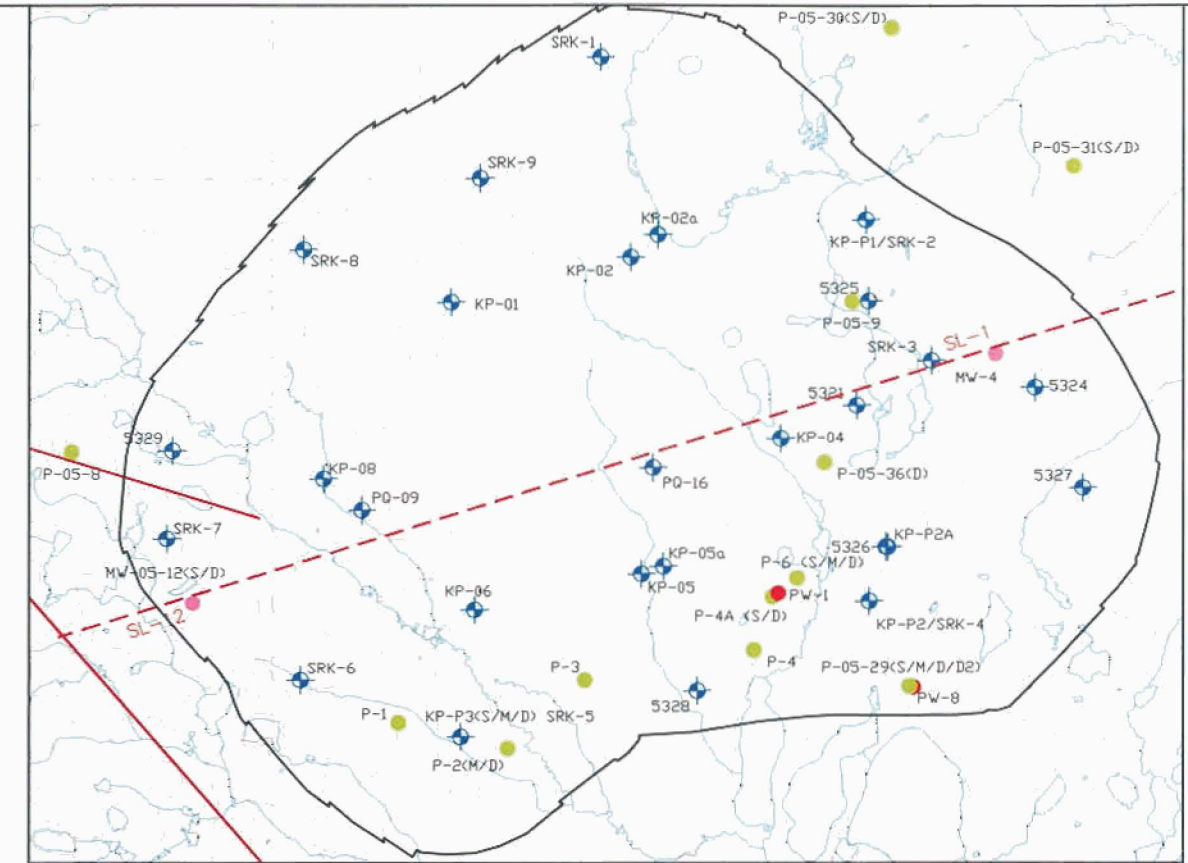
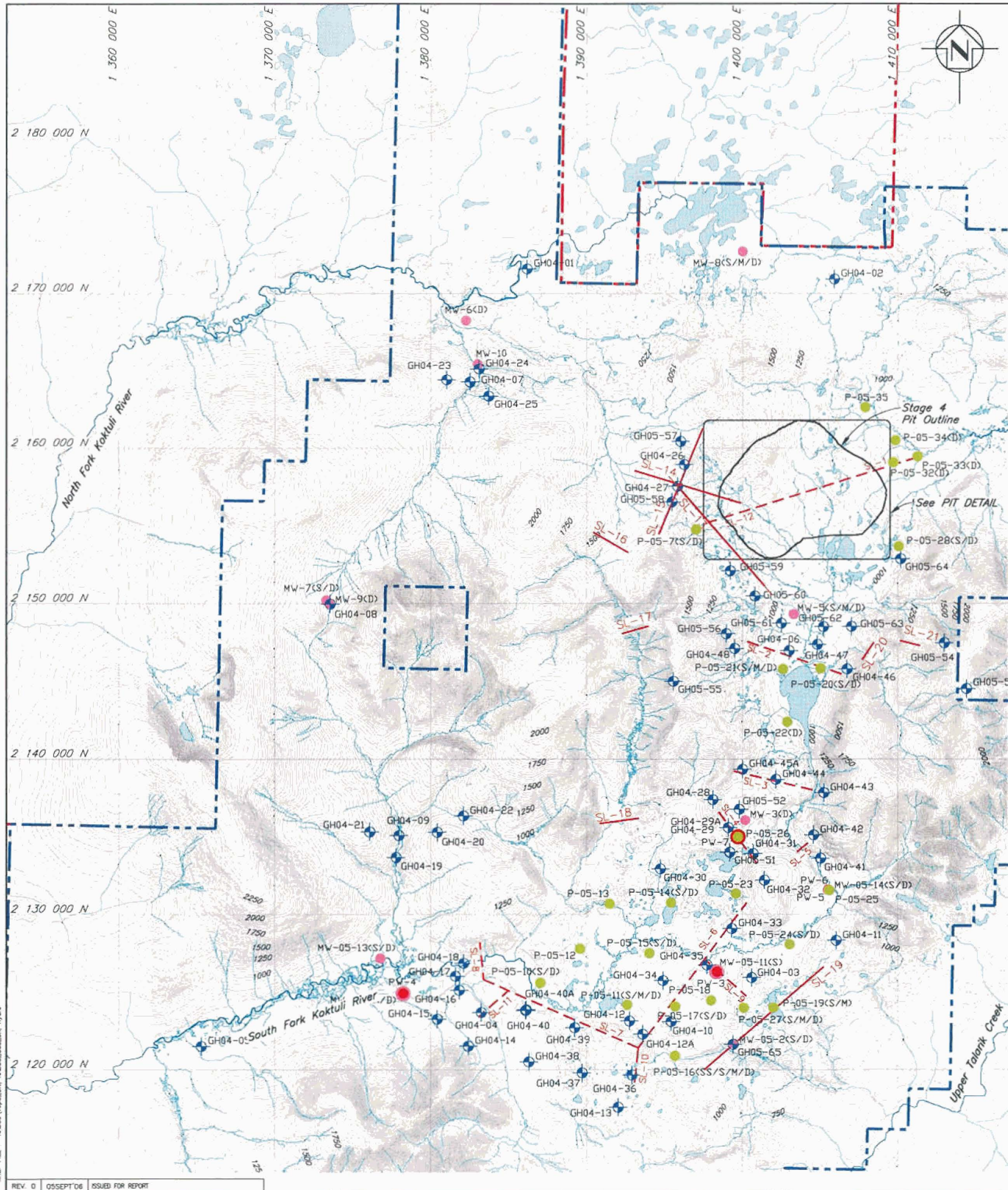
- LEGEND**
- Current NDM Mineral Claim Boundary
 - Other Claim Boundary
 - + Completed Test Pits in 2004
 - + Completed Test Pits in 2005

NORTHERN DYNASTY MINES INC.			
PEBBLE PROJECT			
TEST PIT LOCATION PLAN			
Knight Piésold CONSULTING	PROJECT/ASSIGNMENT NO.	REF. NO.	REV.
	VA101-176/16	13	0
FIGURE 3.2			

XREF FILE: NDM03\Topo_SIT_Hydris_NDM03_solid_en

REV. 0 05SEPT'06 ISSUED FOR REPORT

CAD FILE: M:\1\01\00176\16\Acad\Figs\B\108.dwg 1=7500' Plot: 1=11ps AUG 29, 2008 SC VANCOUVER B.C.



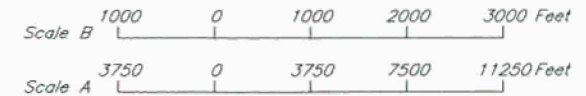
PIT DETAIL
Scale B

LEGEND

- Current NDM Mineral Claim Boundary
- Other Claim Boundary
- ◆ GH04-1 Geotechnical Drillholes Completed in 2004
- ◆ GH05-1 Geotechnical Drillholes Completed in 2005
- P-1 Completed Supplementary MW or Regional Piezometer
- PW-1 Completed Pumping Test Location
- MW-1 Completed Baseline Monitoring Wells
- 2004 Seismic Line
- 2005 Seismic Line

NOTES

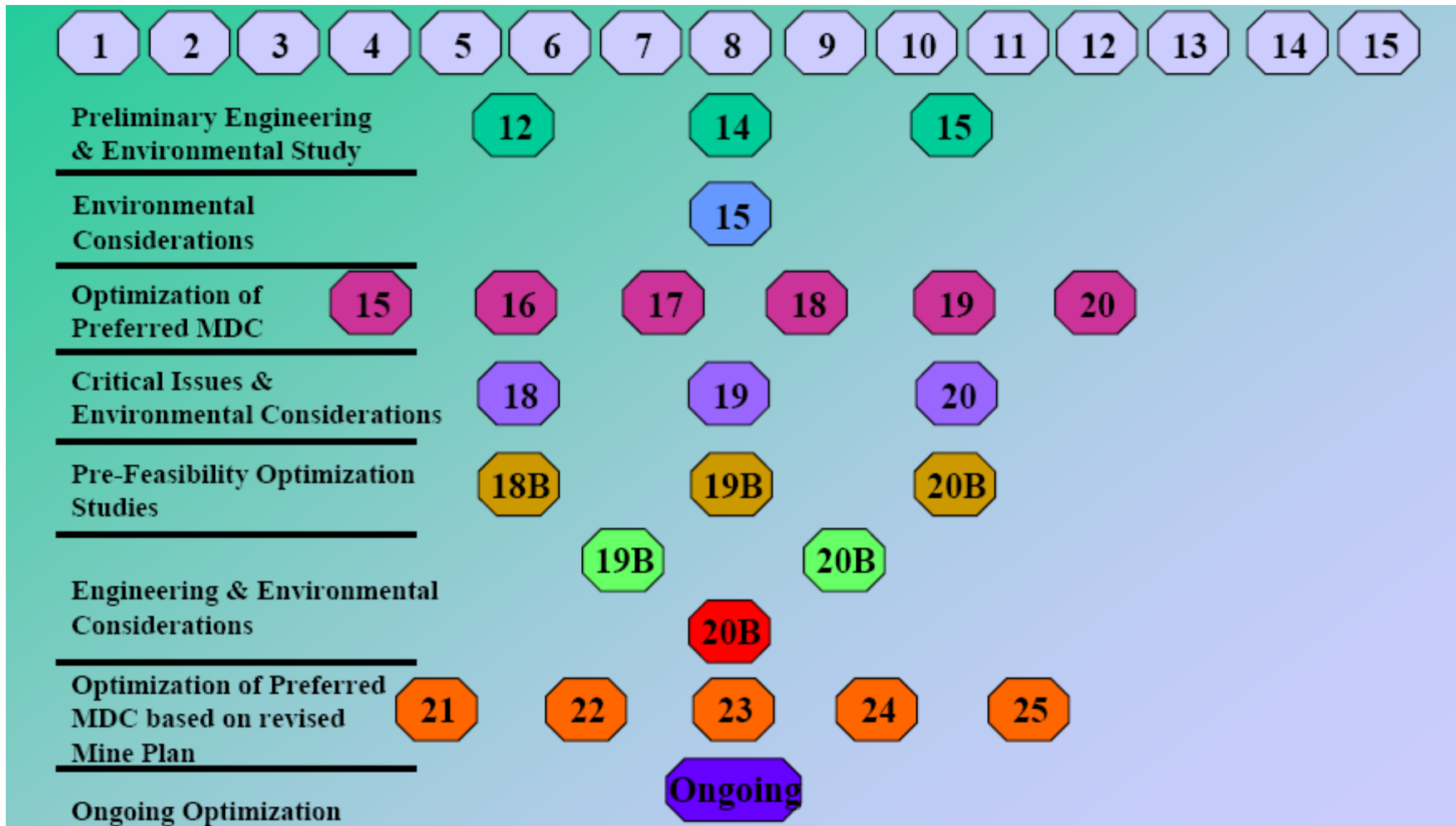
1. Piezometers installed in all Geotechnical Drillholes excluding oriented core holes.
2. As of Nov 8, 2005.



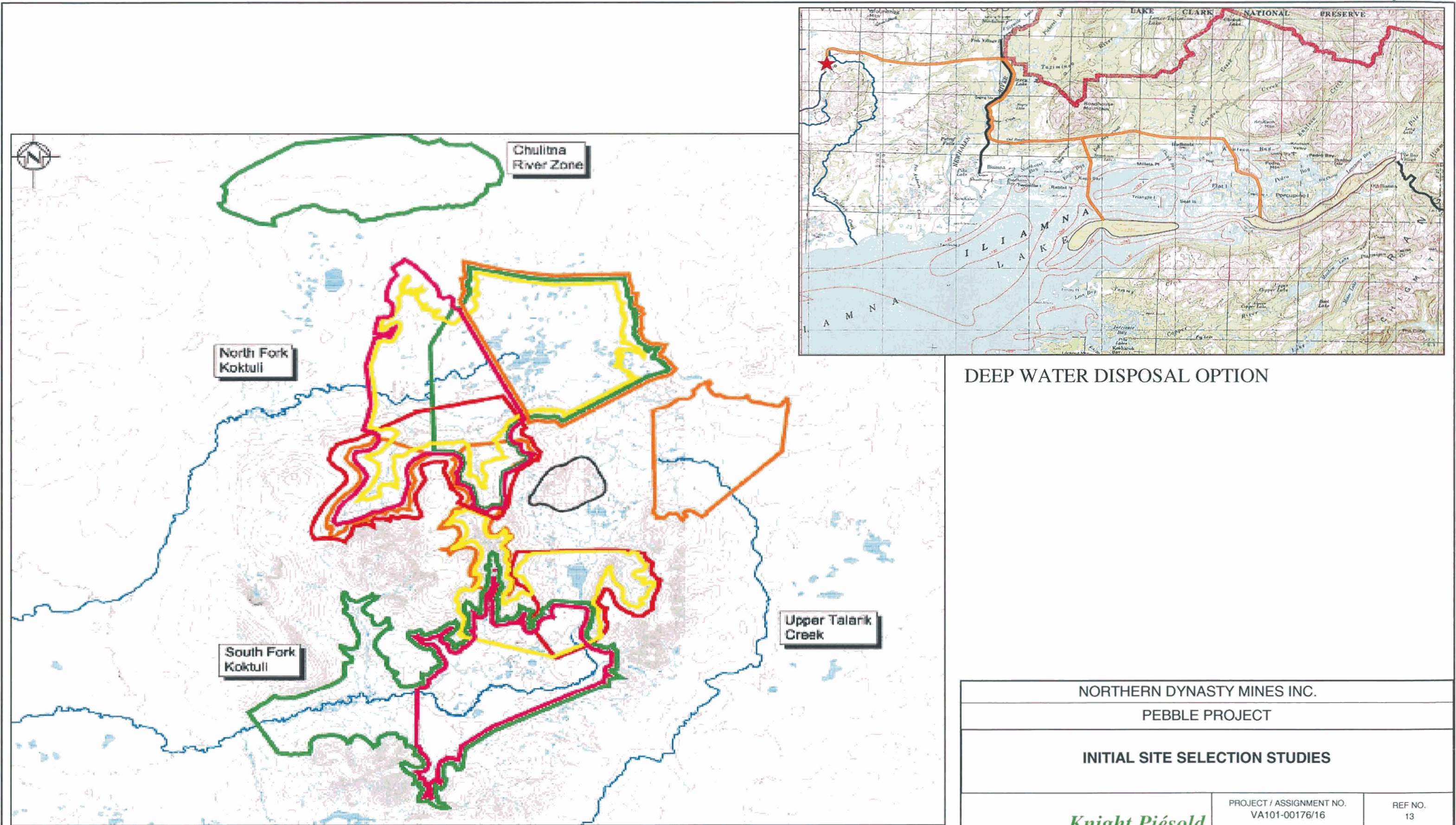
NORTHERN DYNASTY MINES INC.			
PEBBLE PROJECT			
GEOTECHNICAL DRILLHOLE LOCATION PLAN			
Knight Piésold CONSULTING	PROJECT/ASSIGNMENT NO.	REF. NO.	REV.
	VA101-176/16	13	0
FIGURE 3.3			

XREF FILE : M0033\Topo_S11_M0033_001.dwg, Hydro

CAD FILE: M:\01\00176\16\A\Acad\Figs\B116.dwg 1=7500 & 1=2000 Plot 1=(PS) Aug 29, 2006 SC

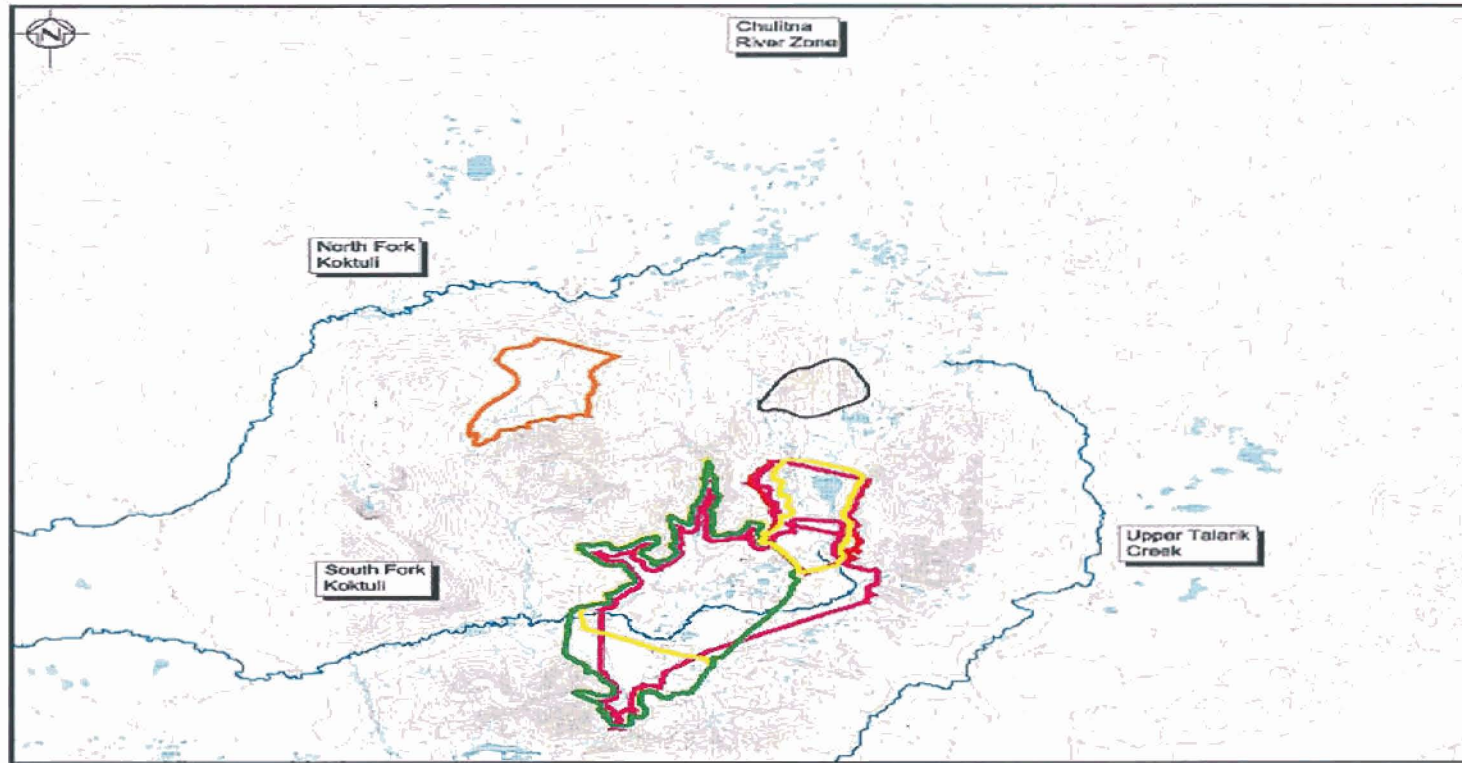


NORTHERN DYNASTY MINES INC.		
PEBBLE PROJECT		
OVERVIEW OF SITE SELECTION PROCESS		
<i>Knight Piésold</i> CONSULTING	PROJECT / ASSIGNMENT NO. VA101-00176/16	REF NO. 13
	FIGURE 4.1	
		REV. 0

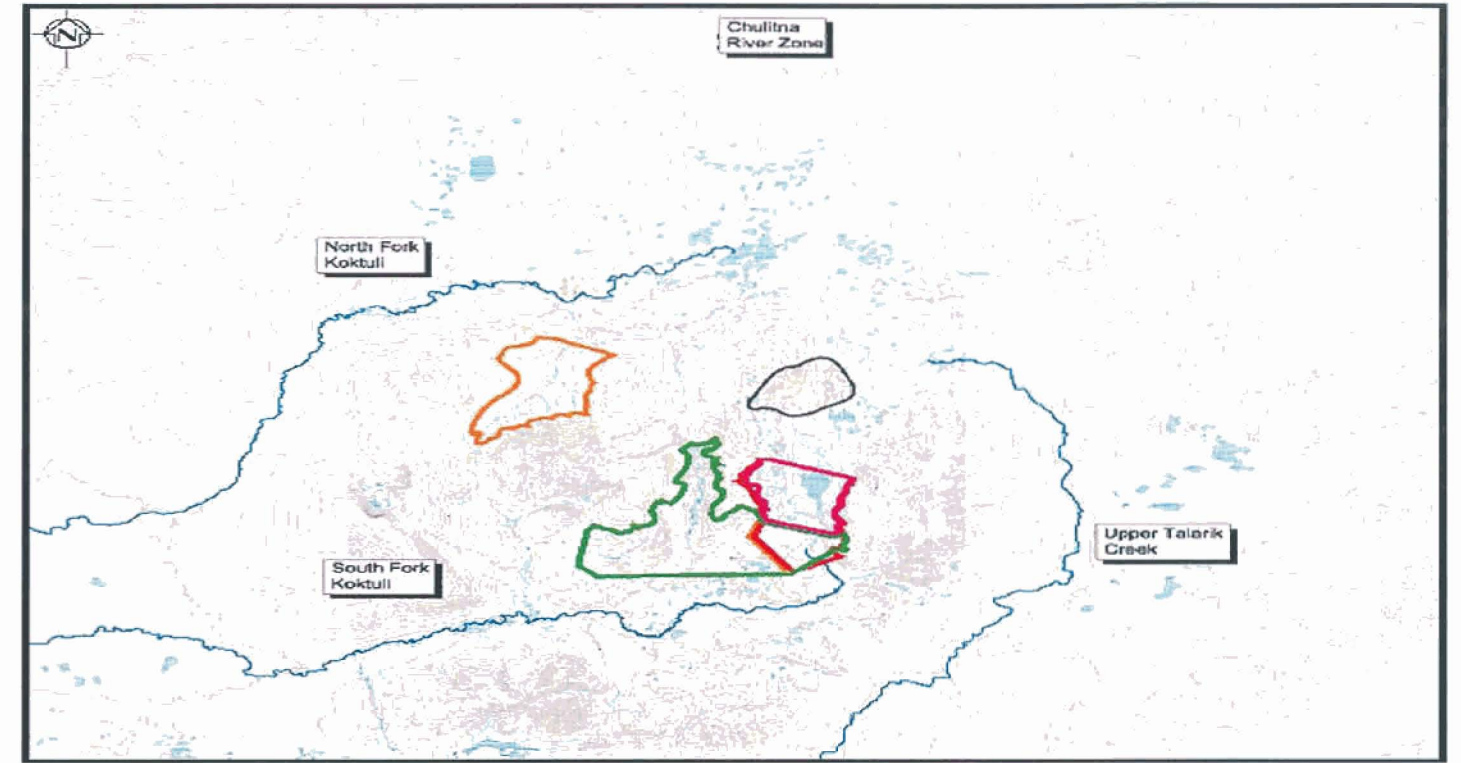


DEEP WATER DISPOSAL OPTION

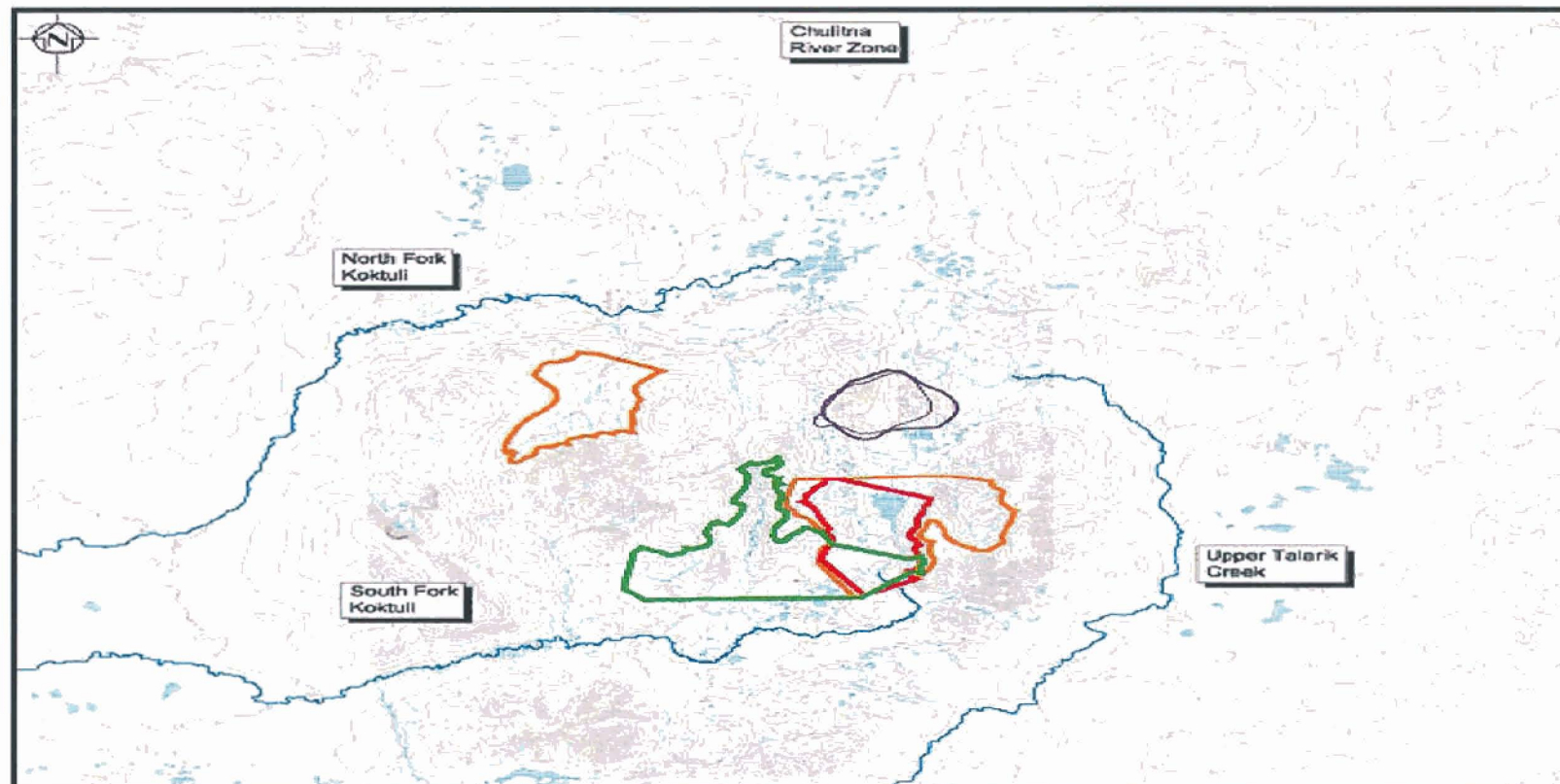
NORTHERN DYNASTY MINES INC.		
PEBBLE PROJECT		
INITIAL SITE SELECTION STUDIES		
	PROJECT / ASSIGNMENT NO. VA101-00176/16	REF NO. 13
	<p align="center">FIGURE 4.2</p>	
Rev 0 - Issued for Report		REV. 0



MDC 16 - 20

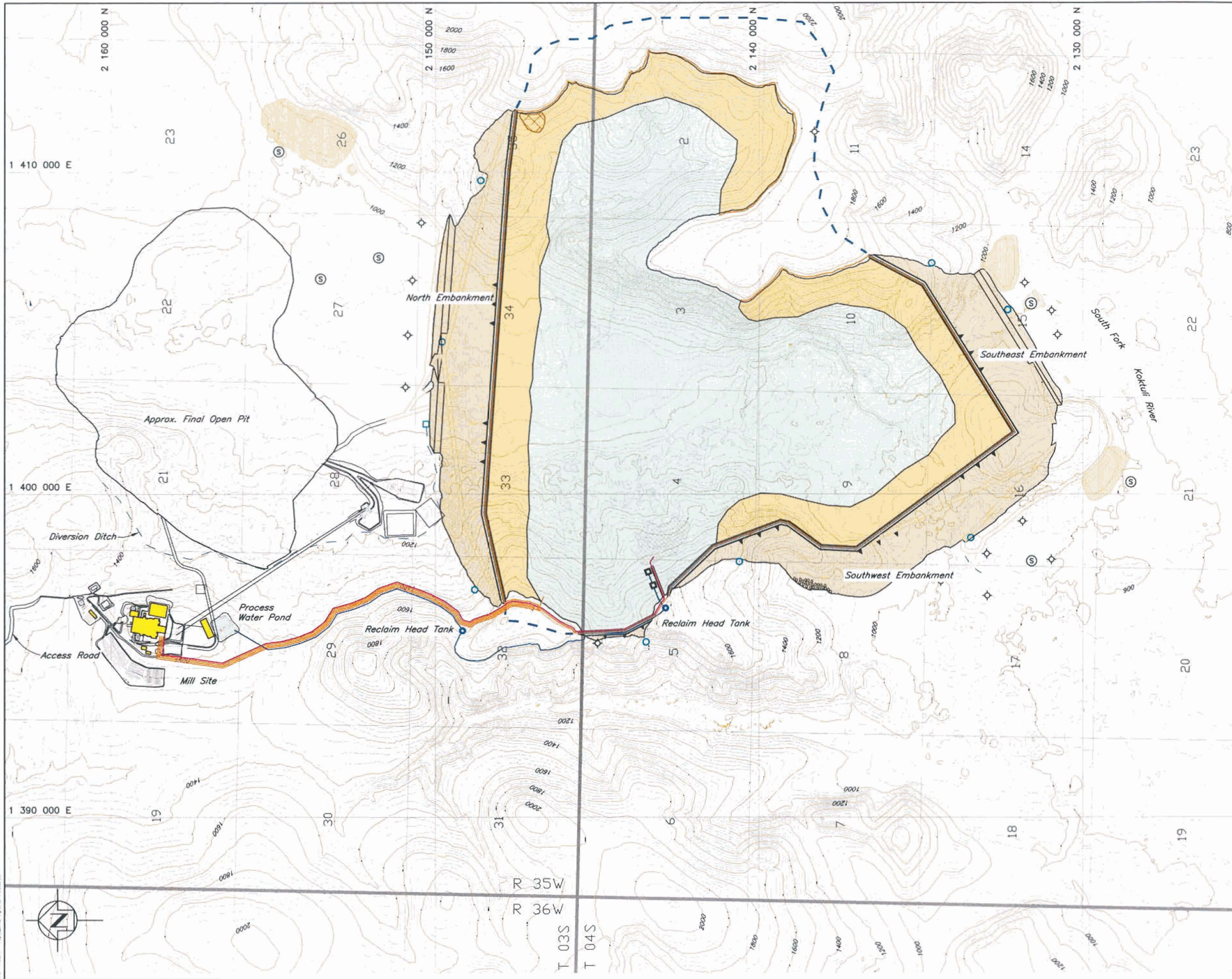


MDC 18B, 19B and 20B



MDC 21 - 25

NORTHERN DYNASTY MINES INC.		
PEBBLE PROJECT		
SUBSEQUENT AND ONGOING SITE SELECTION STUDIES		
	PROJECT / ASSIGNMENT NO. VA101-00176/16	REF NO. 13
	FIGURE 4.3	
		REV. 0



LEGEND

- Tailings Beach
- Supernatant Pond
- Non-reactive Mine Rock
- Potentially Reactive Waste Rock
- Potentially Reactive Tailings
- TSF Catchment Boundary
- Bulk Tailings Slurry Pipeline
- Pyritic Tailings Slurry Pipeline
- Reclaim Pipeline
- Roads
- Monitoring Well
- Sediment Control
- Seepage Collection Sump
- Surface Runoff Collection Point
- Topsoil Stockpile
- Zone S (Core) Stockpile
- Reclaim Barge
- Diversion Ditch

NOTE

1. Mine site topography information is in NAD83 Alaska State Plane Zone 5 Foot. Outer stream/lake features have been incorporated from NAD27 information. Contour interval shown is 25 ft. Information provided by Eagle Mapping, Nov. 2004.
2. The Pebble Project is located within Townships 3-5 South, Ranges 34-37 West, Seward Meridian.

DRAFT

FOR DISCUSSION ONLY

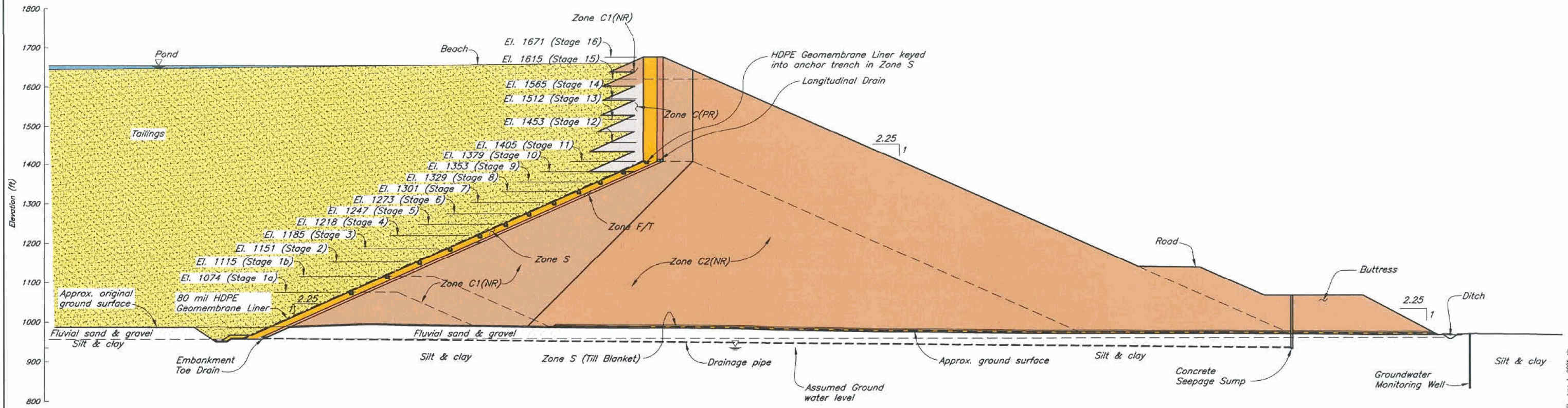


NORTHERN DYNASTY MINES INC.

PEBBLE PROJECT

**TAILINGS STORAGE FACILITY – SITE A
GENERAL ARRANGEMENT**

Knight Piésold CONSULTING	PROJECT/ASSIGNMENT NO. VA101-176/16	REF. NO. 13	FIGURE 5.1	REV. 0

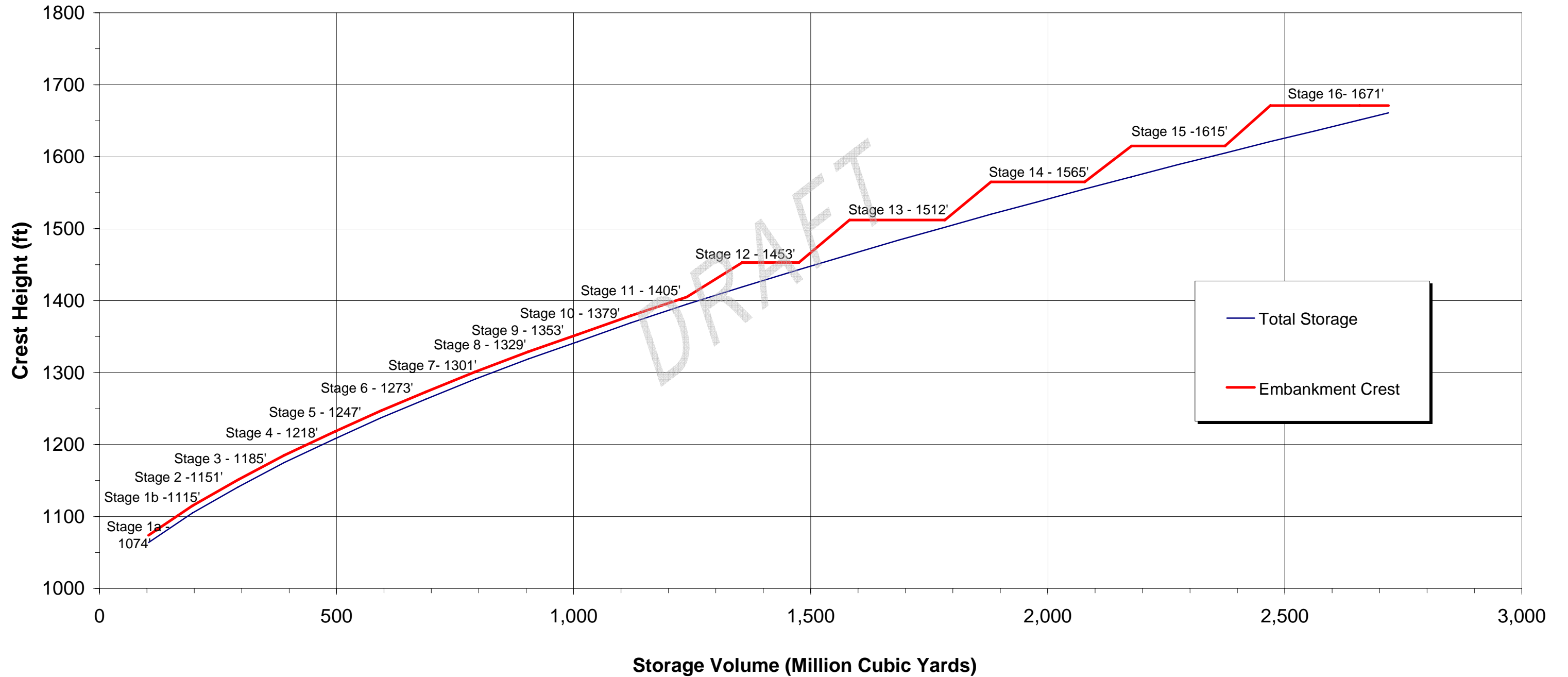


DRAFT

FOR DISCUSSION ONLY

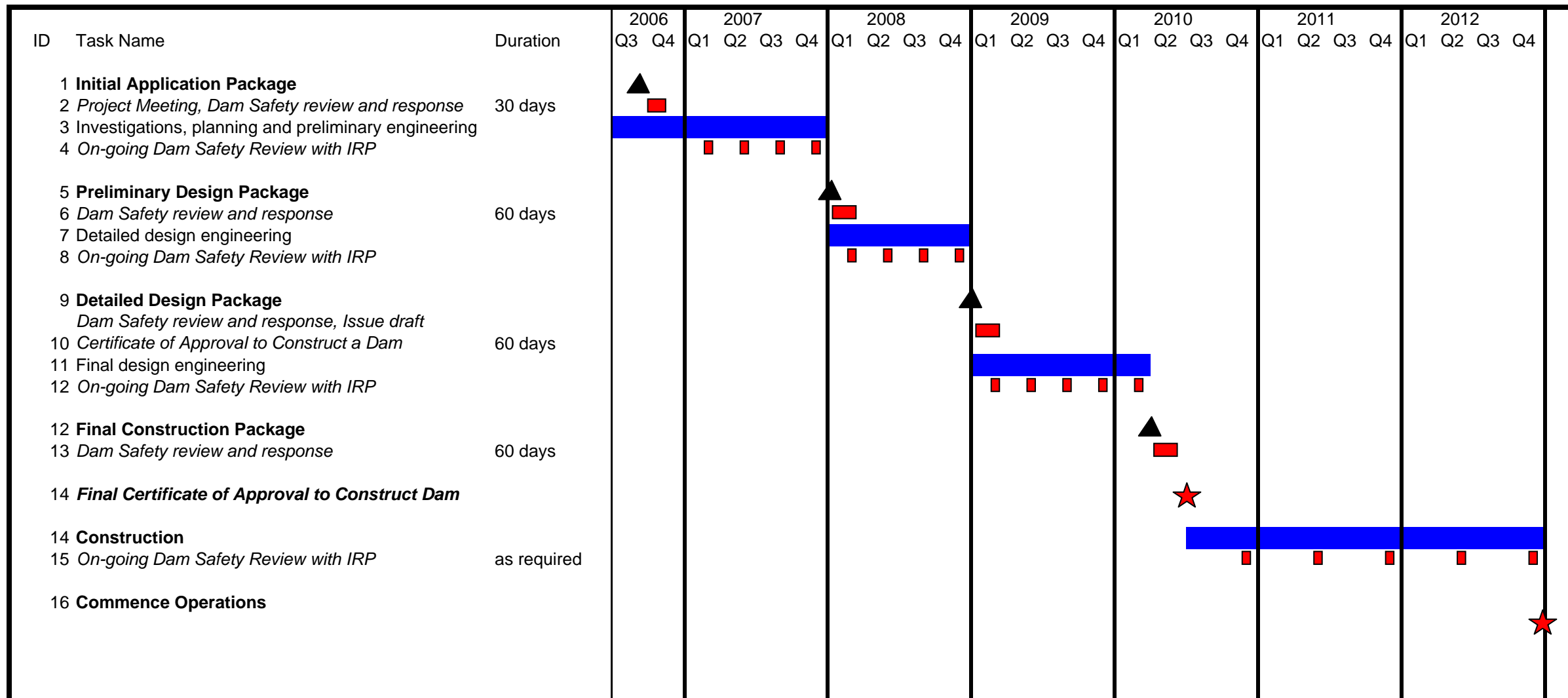
125 0 125 250 375 Feet

NORTHERN DYNASTY MINES INC.		
PEBBLE PROJECT		
TAILINGS DAM PRELIMINARY TYPICAL CROSS-SECTION		
Knight Piésold CONSULTING	PROJECT/ASSIGNMENT NO. VA101-176/16	REF. NO. 13
	FIGURE 5.2	



- NOTES:**
 1) Total Storage Volume Includes PR Waste, Tailings, Supernatant Pond and Storm Containment
 2) Embankment Crest Elevation Includes 10 ft. freeboard

NORTHERN DYNASTY MNES INC.		
PEBBLE PROJECT		
TAILINGS STORAGE FACILITY SITE A FILLING SCHEDULE		
<i>Knight Piésold</i> CONSULTING	PROJECT / ASSIGNMENT NO. VA101-176/16	REF NO. 13
	FIGURE 5.3	
		REV. 0



NORTHERN DYNASTY MINES INC			
PEBBLE PROJECT			
TAILINGS IMPOUNDMENT A - INITIAL APPLICATION REPORT DAM SAFETY APPLICATION AND REVIEW PROCESS			
<i>Knight Piésold</i> CONSULTING	PROJECT / ASSIGNMENT NO. VA101-176/16	REF NO. 13	REV. 0
	FIGURE 5.4		

Rev 0 - Issued for Report