

VANCOUVER B.C. CAD FILE: M:\1\001\00176\16\VA\Asst\Fig\VA1 - 1 (PS). AUG 30, 2006

NORTHERN DYNASTY MINES INC.

PEBBLE PROJECT

PROJECT LOCATION



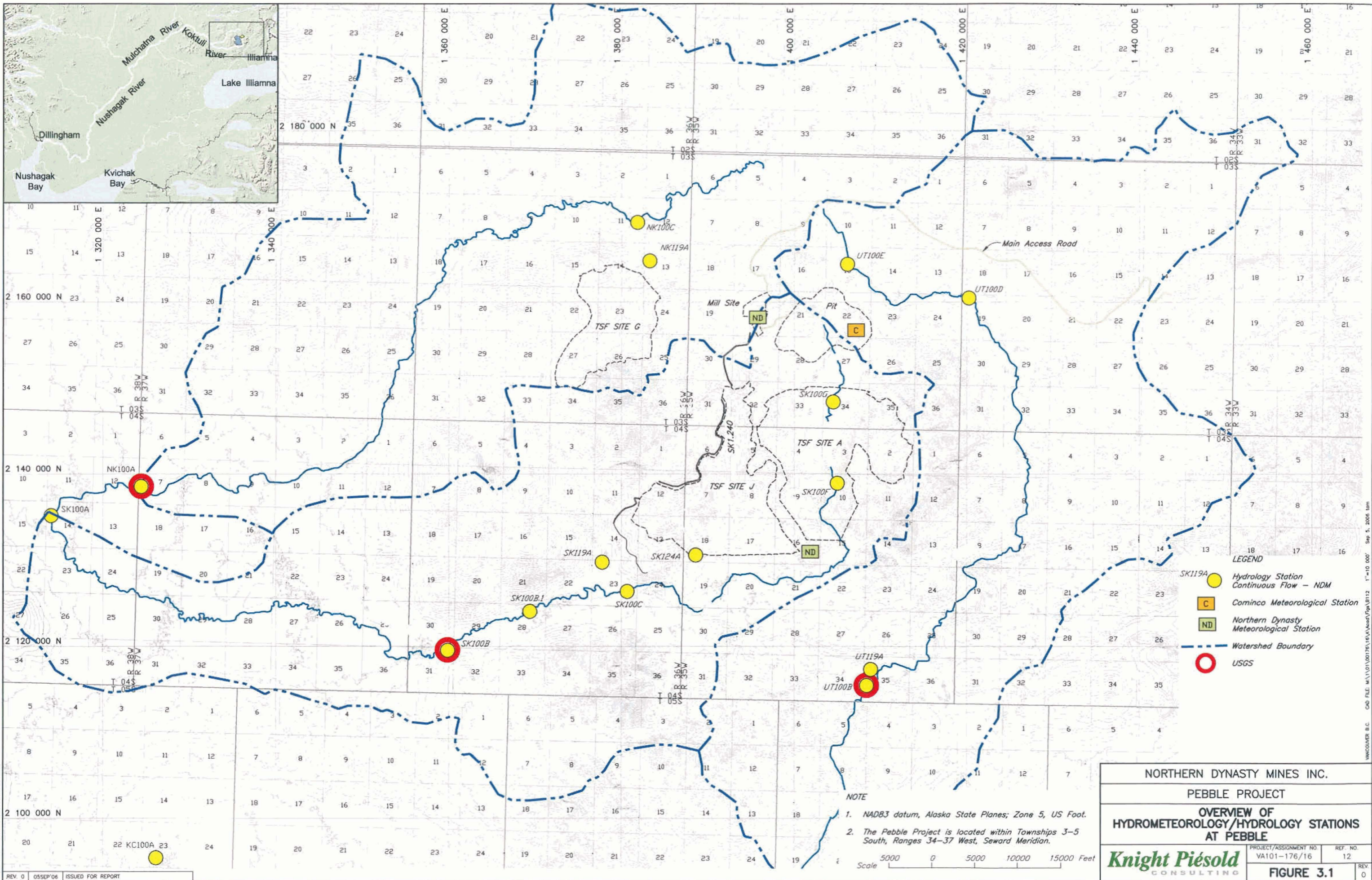
PROJECT/ASSIGNMENT NO. VA101-176/16	REF. NO. 12
--	----------------

FIGURE 1.1

REV
0

XREF FILE : IMAGE_Location.TIF

REV. 0 05SEP06 ISSUED FOR REPORT



- LEGEND**
- SK119A Hydrology Station Continuous Flow - NDM
 - C Cominco Meteorological Station
 - ND Northern Dynasty Meteorological Station
 - Watershed Boundary
 - USGS

NOTE

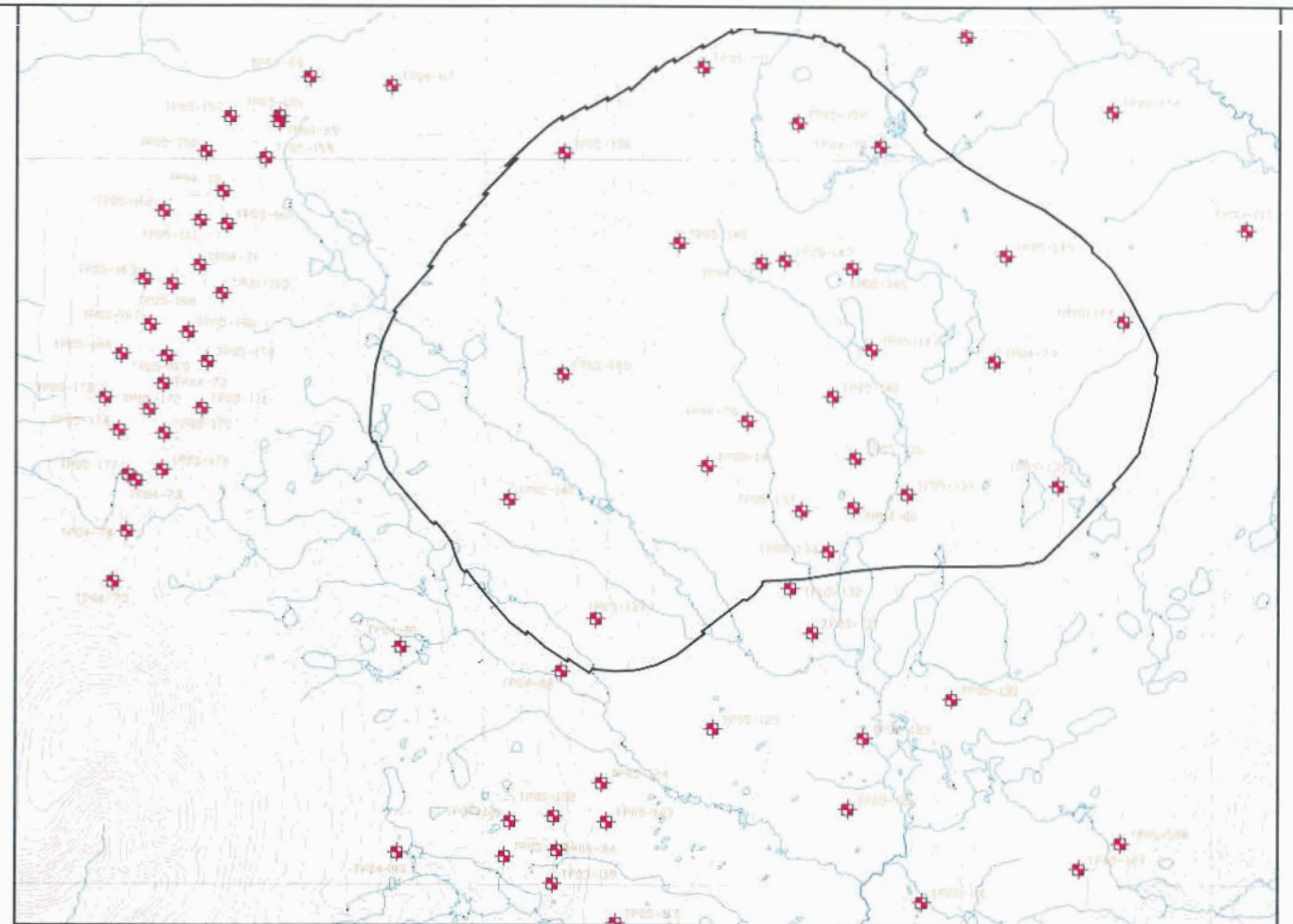
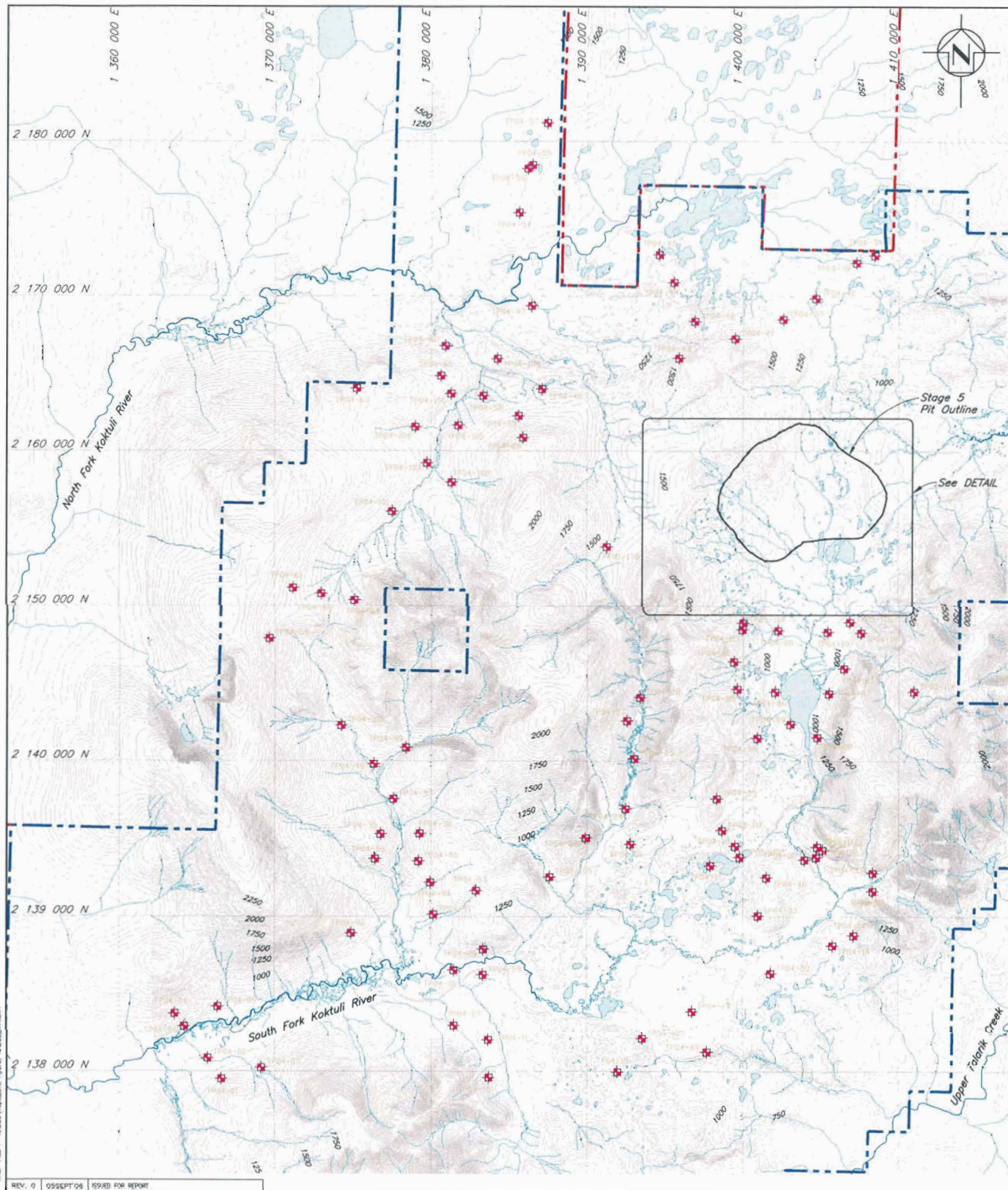
1. NAD83 datum, Alaska State Planes; Zone 5, US Foot.
2. The Pebble Project is located within Townships 3-5 South, Ranges 34-37 West, Seward Meridian.

Scale 0 5000 10000 15000 Feet

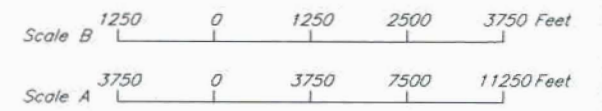
NORTHERN DYNASTY MINES INC.	
PEBBLE PROJECT	
OVERVIEW OF HYDROMETEOROLOGY/HYDROLOGY STATIONS AT PEBBLE	
PROJECT/ASSIGNMENT NO. VA101-176/16	REF. NO. 12
Knight Piésold CONSULTING	
FIGURE 3.1	

REV. 0 05SEP'06 ISSUED FOR REPORT

VANCOUVER B.C. CAD FILE: M:\1\01\00176\16\VA\Asset\Fig\B112 1"=10' 00" Sep 5, 2006 10m



PIT AND MILL SITE DETAIL
Scale B



LEGEND

- Current NDM Mineral Claim Boundary
- Other Claim Boundary
- ★ Completed Test Pits in 2004
- ★ Completed Test Pits in 2005

NORTHERN DYNASTY MINES INC.

PEBBLE PROJECT

TEST PIT LOCATION PLAN

Knight Piésold
CONSULTING

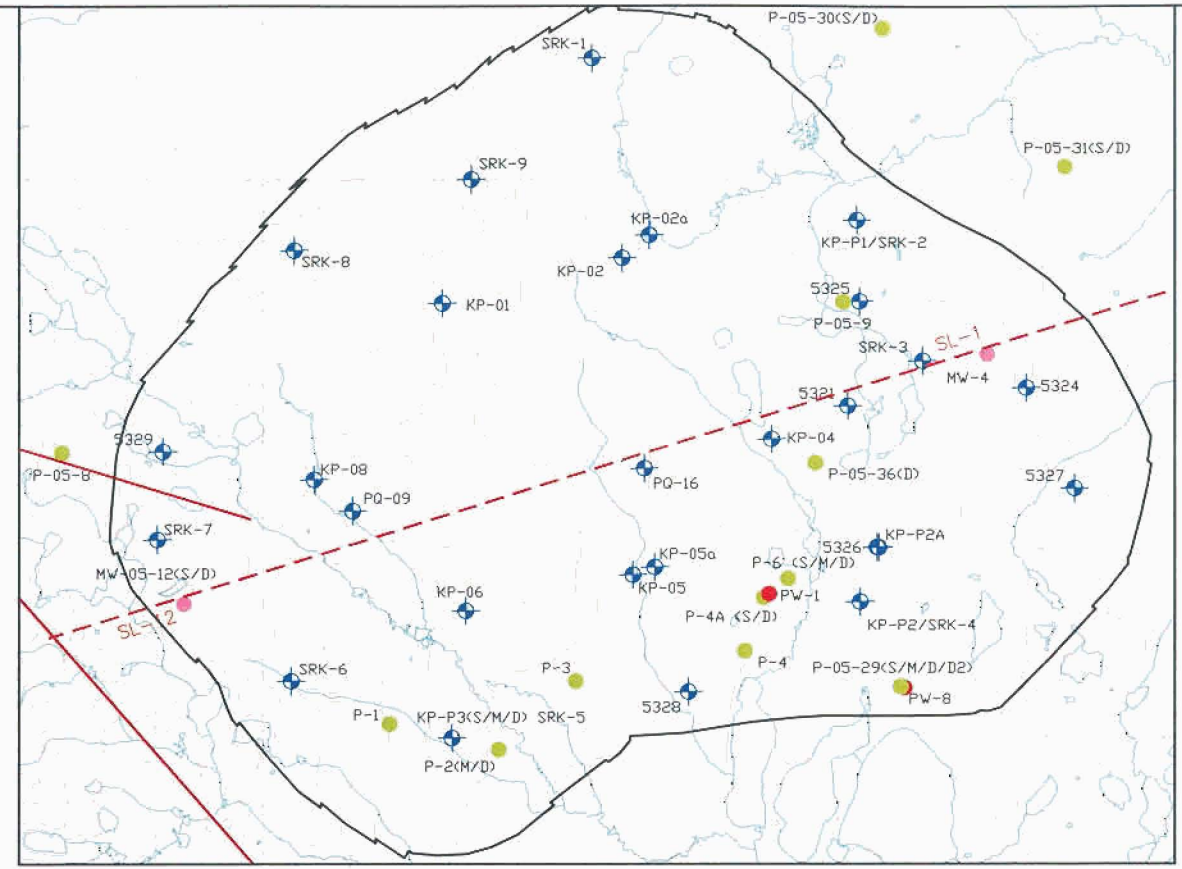
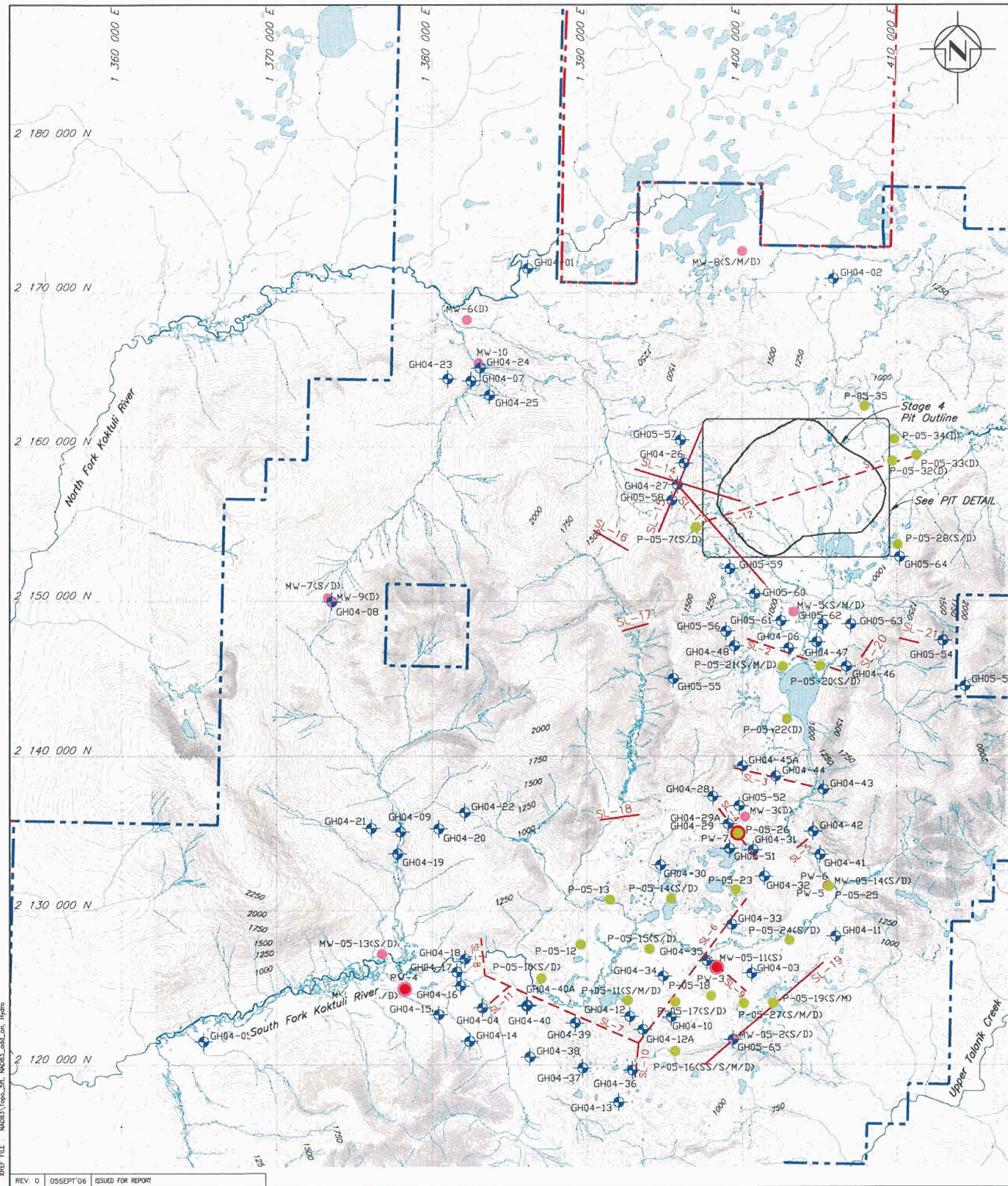
PROJECT/ASSIGNMENT NO. VA101-176/16	REF. NO. 12	REV. 0
--	----------------	-----------

FIGURE 3.2

KREF FILE: NAD03\Figs_Sk_Hydro_NAD03_001.dwg

REV. 0 05SEP2006 ISSUED FOR REPORT

CAD FILE: M:\1\01\00176\16\A\Acad\Figs\B107.dwg 1=7500 Plot: 1=1[PS] AUG 29, 2 06 SC



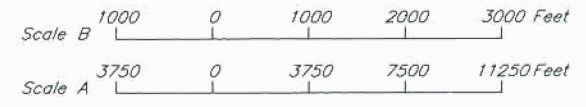
PIT DETAIL
Scale B

LEGEND

- Current NDM Mineral Claim Boundary
- Other Claim Boundary
- GH04-1 Geotechnical Drillholes Completed in 2004
- GH05-51 Geotechnical Drillholes Completed in 2005
- P-1 Completed Supplementary MW or Regional Piezometer
- PV-1 Completed Pumping Test Location
- MW-1 Completed Baseline Monitoring Wells
- 2004 Seismic Line
- 2005 Seismic Line

NOTES

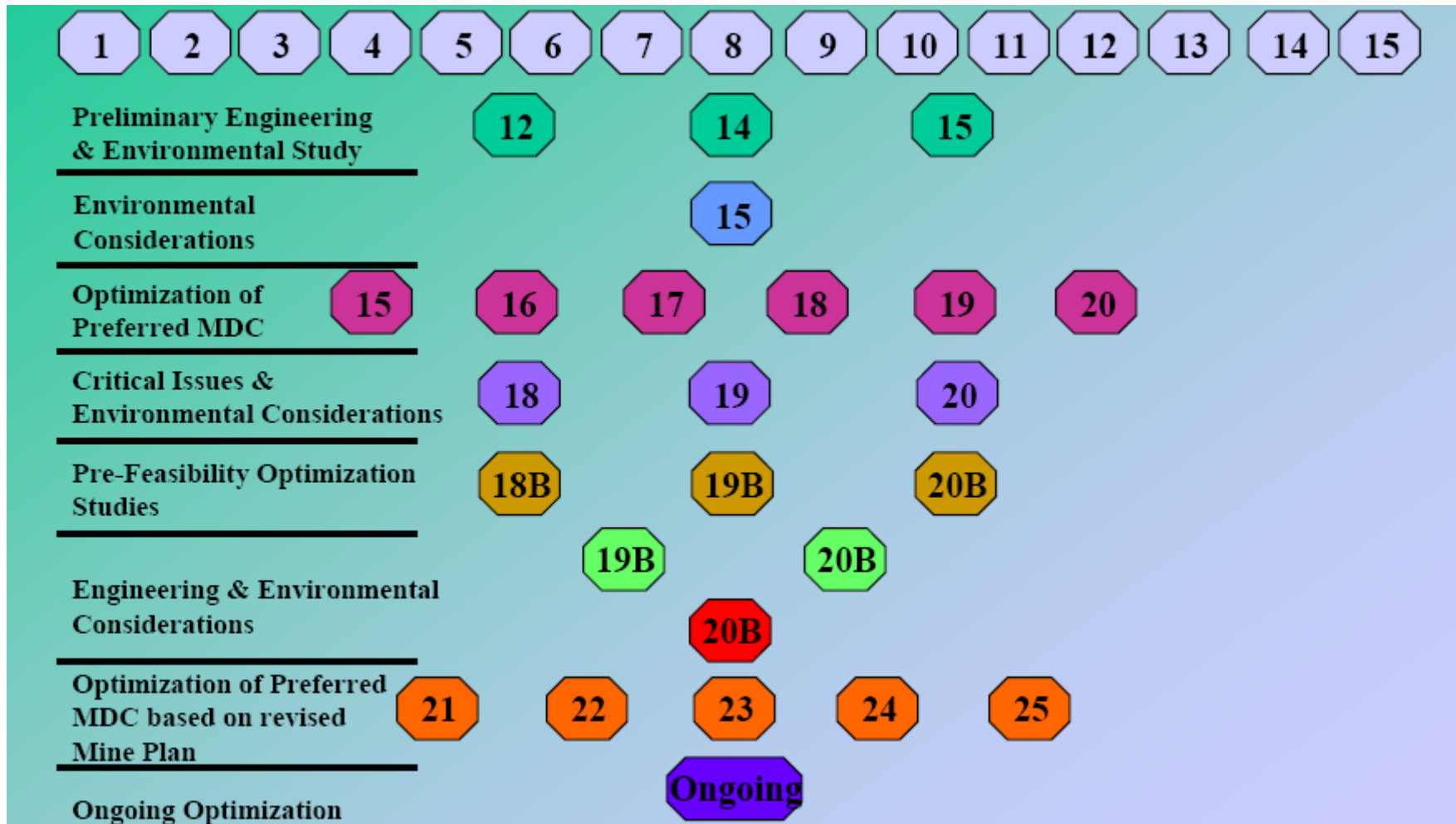
1. Piezometers installed in all Geotechnical Drillholes excluding oriented core holes.
2. As of Nov 8, 2005.



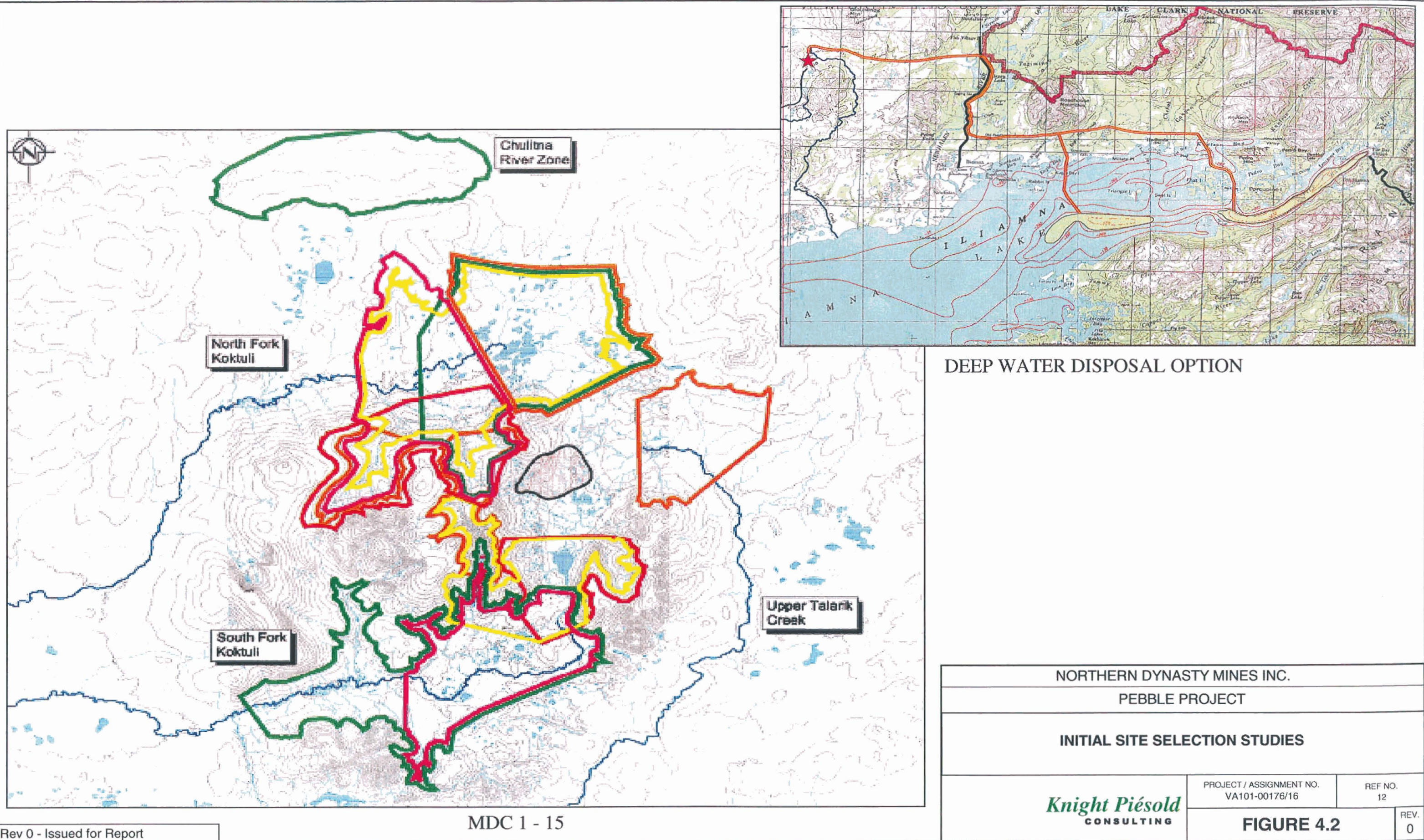
NORTHERN DYNASTY MINES INC.			
PEBBLE PROJECT			
GEOTECHNICAL DRILLHOLE LOCATION PLAN			
Knight Piésold CONSULTING		PROJECT/ASSIGNMENT NO. VA101-176/16	REF. NO. 12
		REV. 0	FIGURE 3.3

XREF FILE: M:\031\Topo_5ft_ND03_001.dwg, Hydro

CAD FILE: M:\1\01\00176\16\VA\Acad\Figs\B114.dwg 1=7500 & 1=2000 Plot: 1=1(FS) Aug 29, 2006 SC

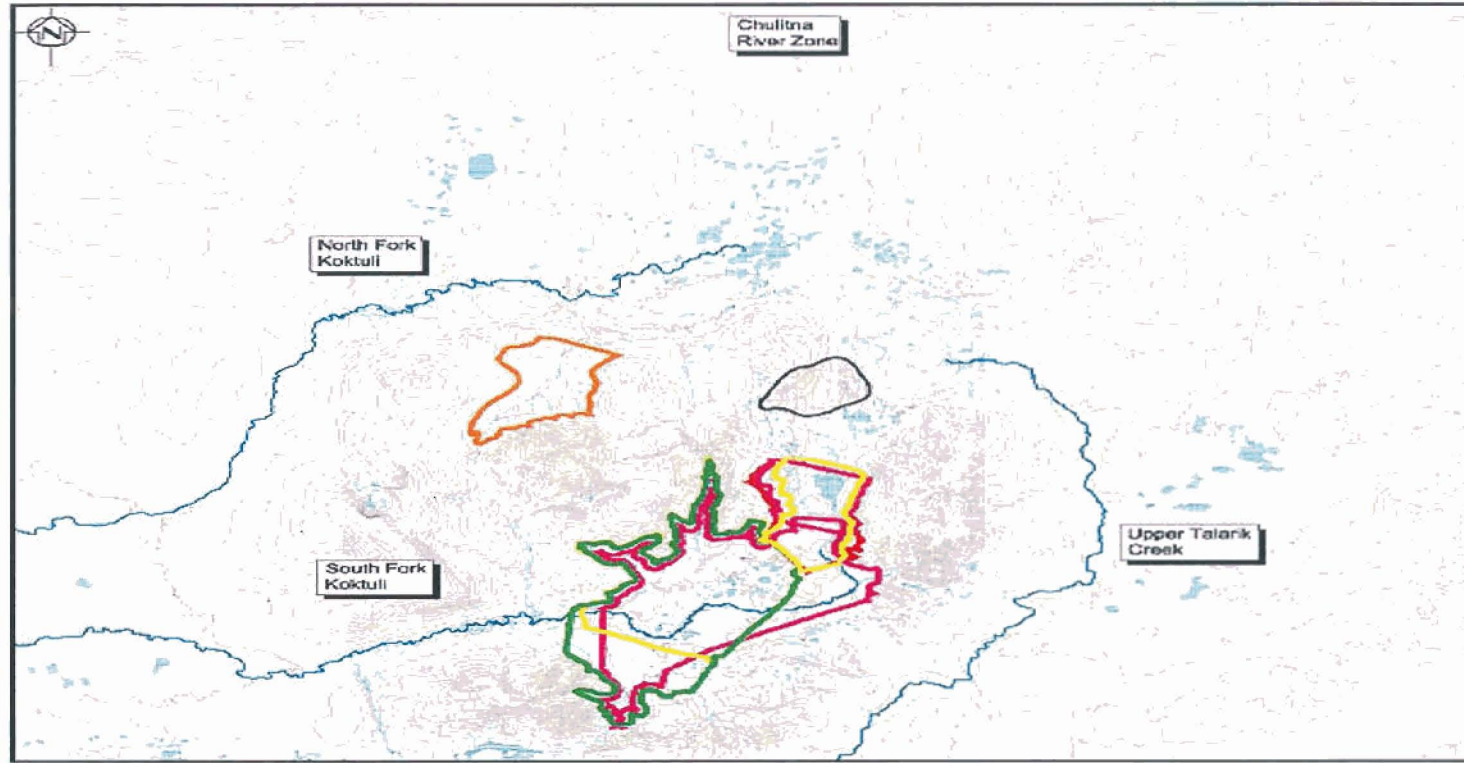


NORTHERN DYNASTY MINES INC.		
PEBBLE PROJECT		
OVERVIEW OF SITE SELECTION PROCESS		
<i>Knight Piésold</i> CONSULTING	PROJECT / ASSIGNMENT NO. VA101-00176/16	REF NO. 12
	FIGURE 4.1	
		REV. 0

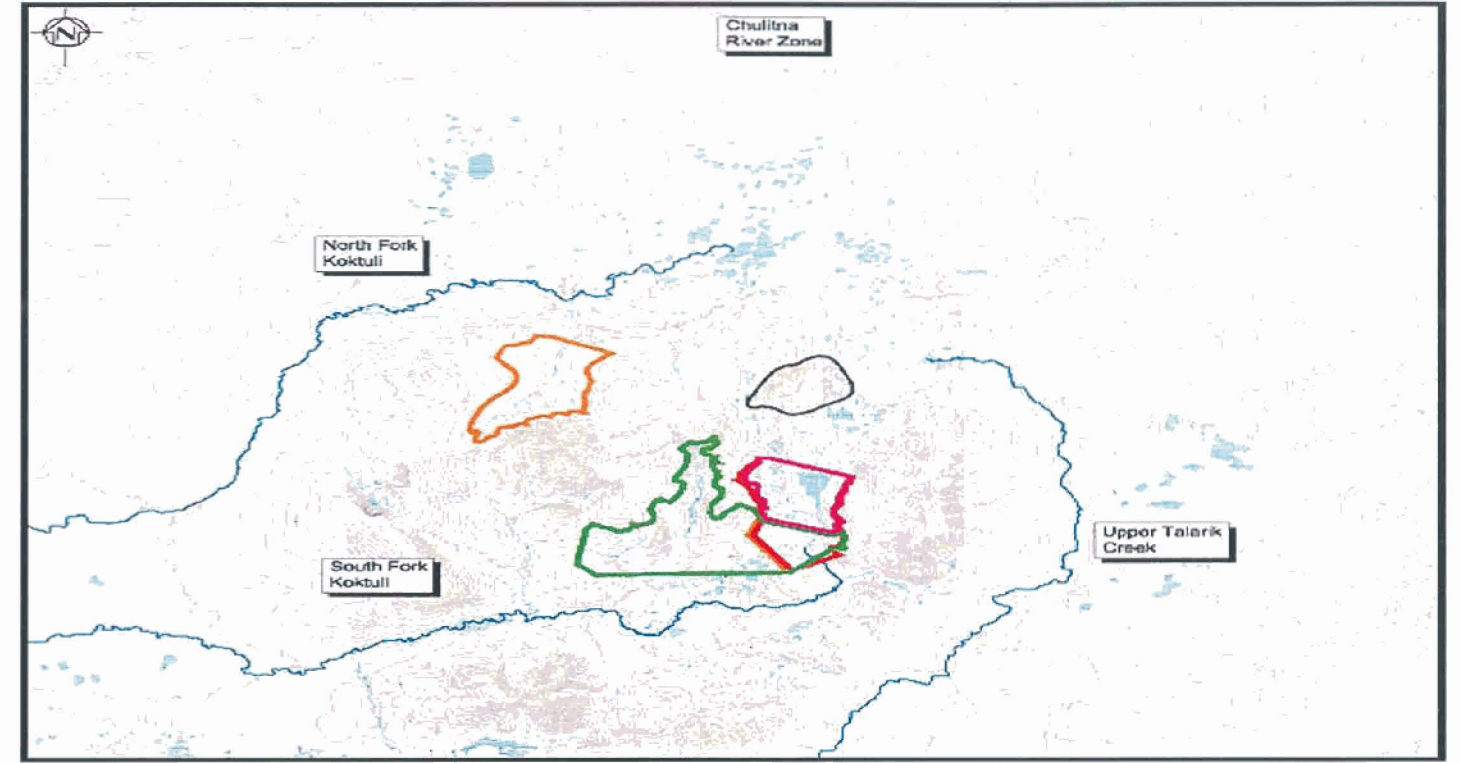


DEEP WATER DISPOSAL OPTION

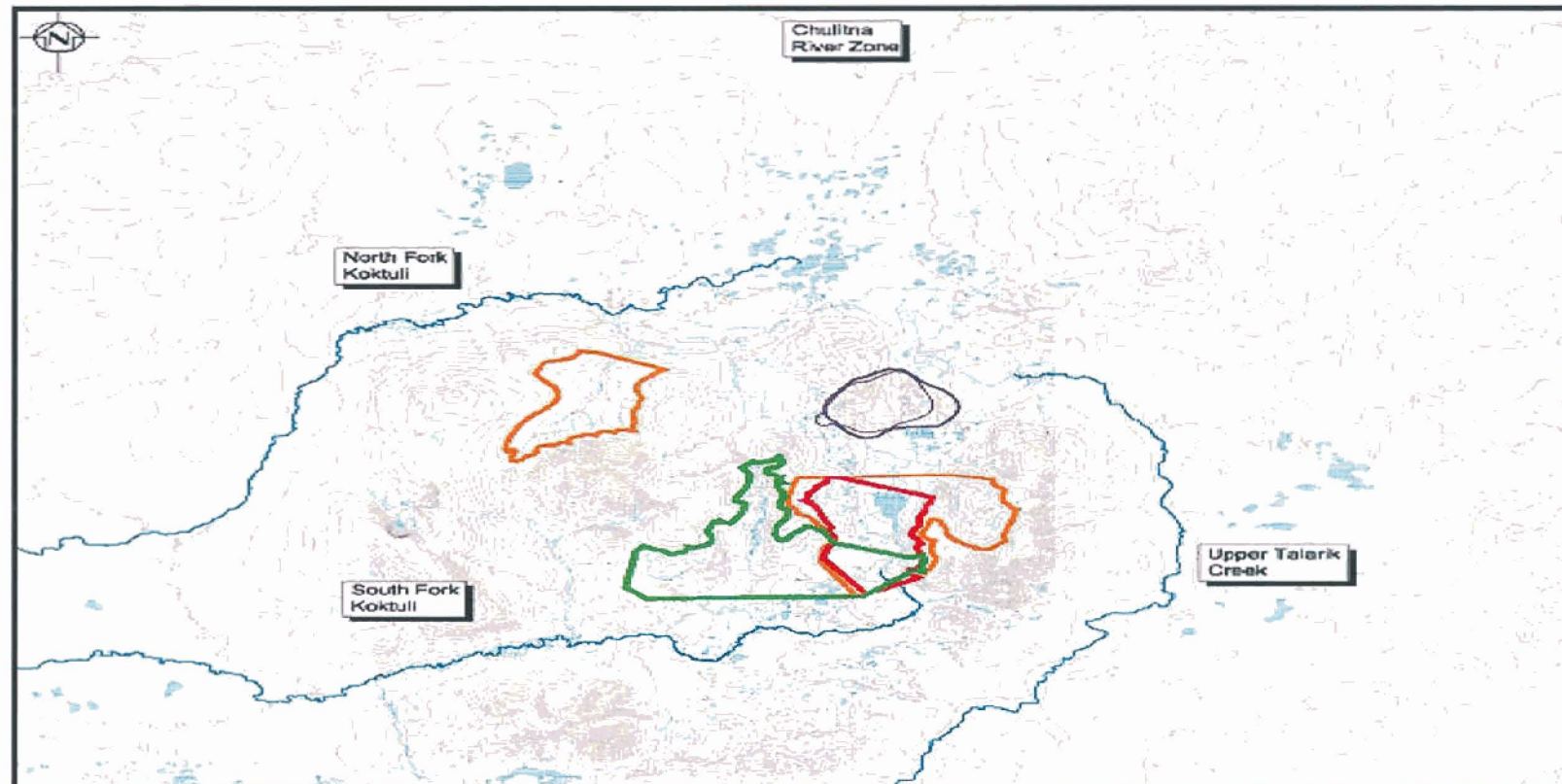
NORTHERN DYNASTY MINES INC.		
PEBBLE PROJECT		
INITIAL SITE SELECTION STUDIES		
	PROJECT / ASSIGNMENT NO. VA101-00176/16	REF NO. 12
	<p align="center">FIGURE 4.2</p>	
Rev 0 - Issued for Report		REV. 0



MDC 16 - 20

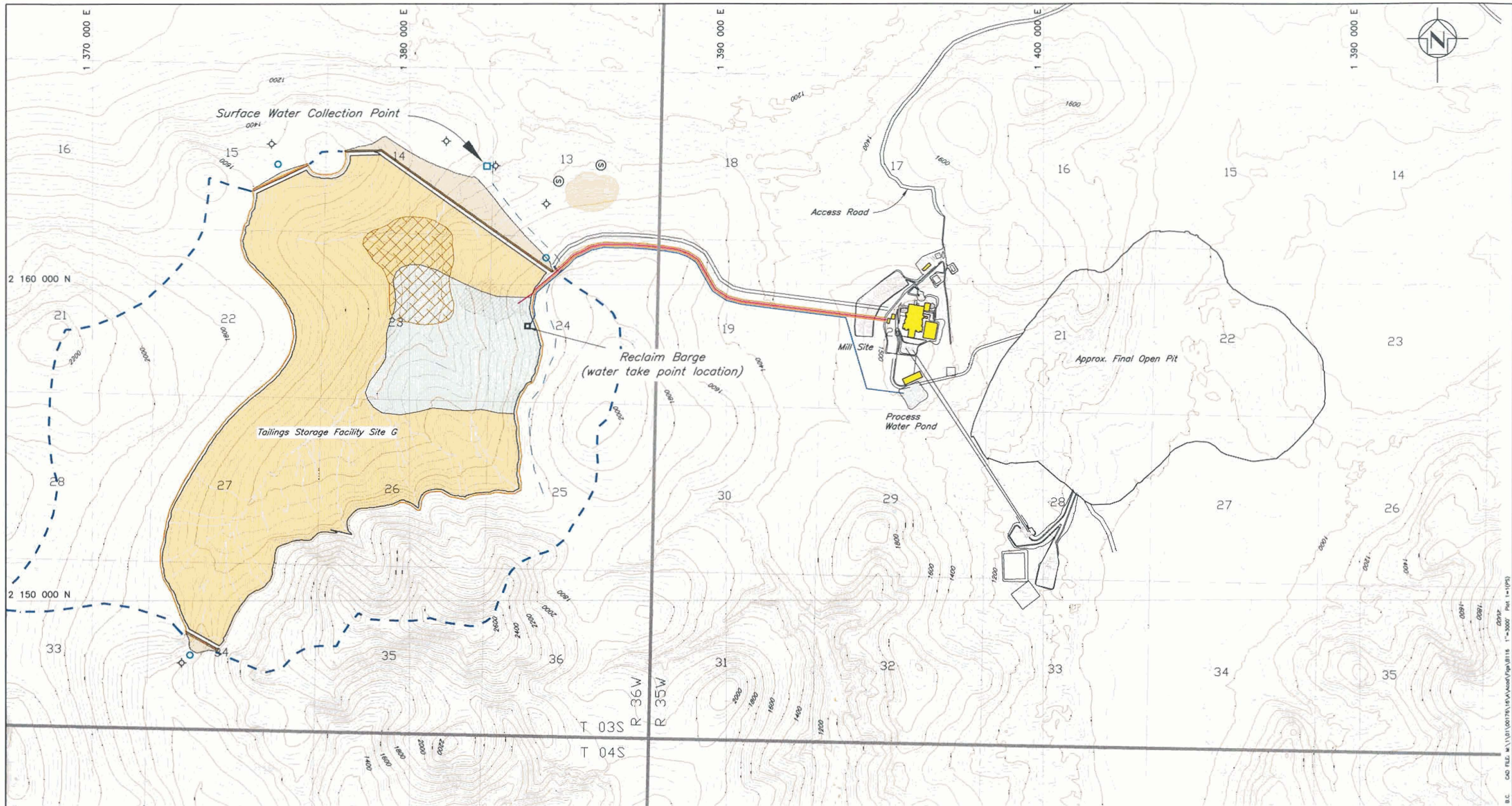


MDC 18B, 19B and 20B



MDC 21 - 25

NORTHERN DYNASTY MINES INC.		
PEBBLE PROJECT		
SUBSEQUENT AND ONGOING SITE SELECTION STUDIES		
	PROJECT / ASSIGNMENT NO. VA101-00176/16	REF NO. 12
	FIGURE 4.3	
		REV. 0



LEGEND			
	Tailings Beach		Monitoring Well
	Supernatant Pond		Sediment Control
	Non-reactive Mine Rock		Seepage Collection Sump
	Potentially Reactive Waste Rock		Surface Runoff Collection Point
	Pyritic Tailings		Topsail Stockpile
	TSF Catchment Boundary		Reclaim Barge
	Pyritic Tailings Slurry Pipeline		
	Bulk Tailings Slurry Pipeline		
	Reclaim Pipeline		
	Roads		
	Diversion Ditch		

NOTE

- Mine site topography information is in NAD83 Alaska State Plane Zone 5 Foot. Outer stream/lake features have been incorporated from NAD27 information. Contour interval shown is 25 ft. Information provided by Eagle Mapping, Nov. 2004.
- The Pebble Project is located within Townships 3-5 South, Ranges 34-37 West, Seward Meridian.

DRAFT

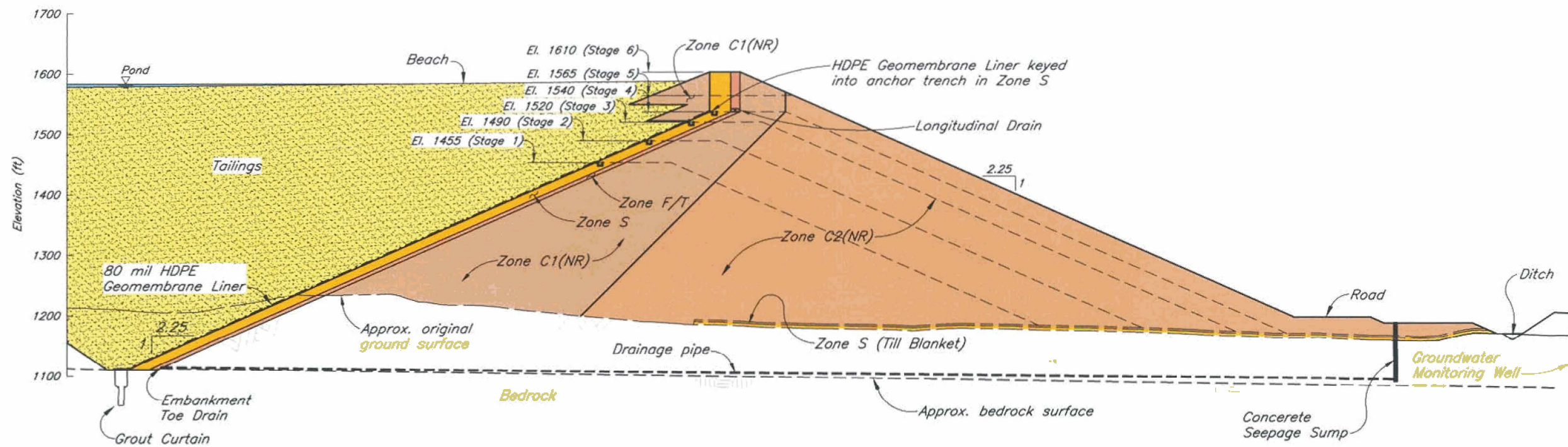
FOR DISCUSSION ONLY



NORTHERN DYNASTY MINES INC.		
PEBBLE PROJECT		
TAILINGS STORAGE FACILITY -- SITE G GENERAL ARRANGEMENT		
Knight Piésold CONSULTING	PROJECT/ASSIGNMENT NO. VA101-176/16	REF. NO. 12
	FIGURE 5.1	
		REV. 0

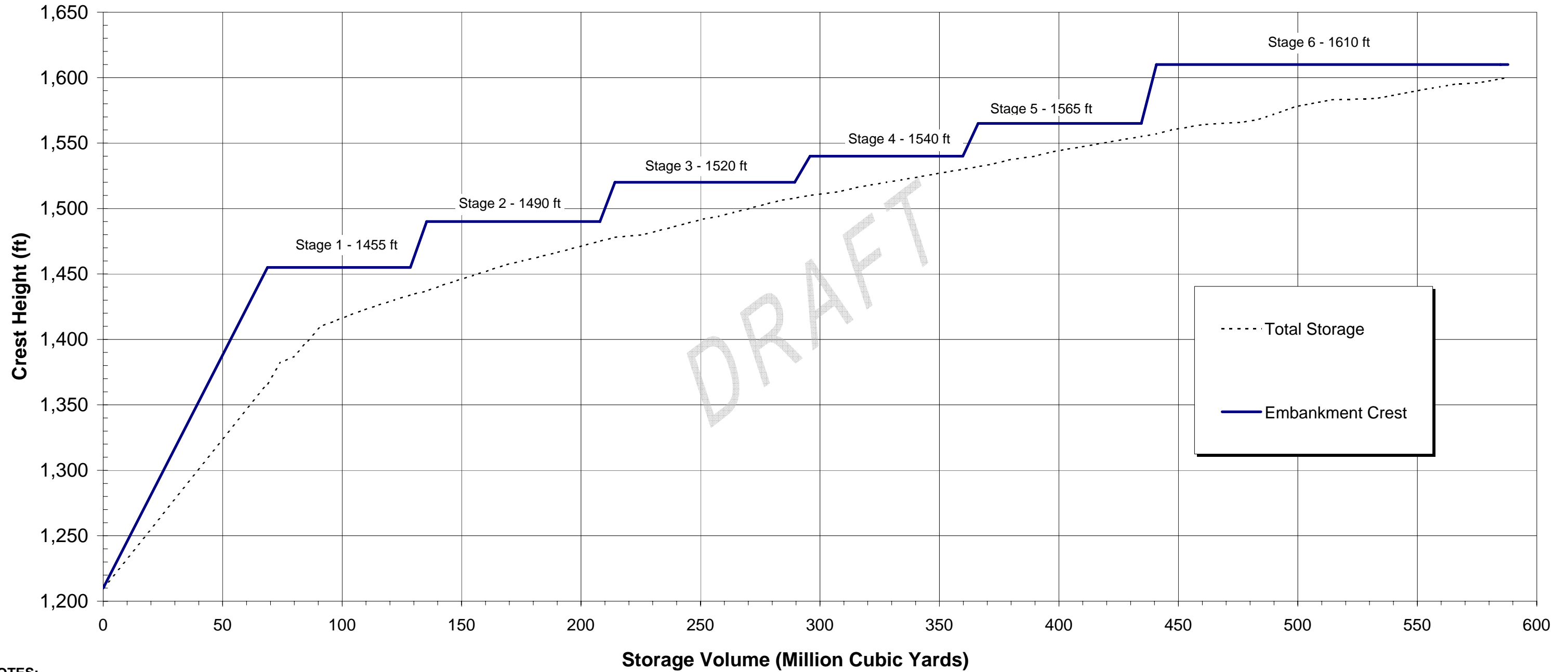
XREF FILE : Topo_Sit_Hydro_Features

W:\WORKSPACE\B.C. CAD FILE: M:\1\101\00176\176\VA101\Fig5.1.dwg 11/1/2006 Plot 1=1(P)



NORTHERN DYNASTY MINES INC.		
PEBBLE PROJECT		
TAILINGS DAM PRELIMINARY TYPICAL CROSS-SECTION		
Knight Piesold CONSULTING	PROJECT/ASSIGNMENT NO. VA101-176/16	REF. NO. 12
	FIGURE 5.2	
REV. 0	05SEP10	ISSUED FOR REPORT

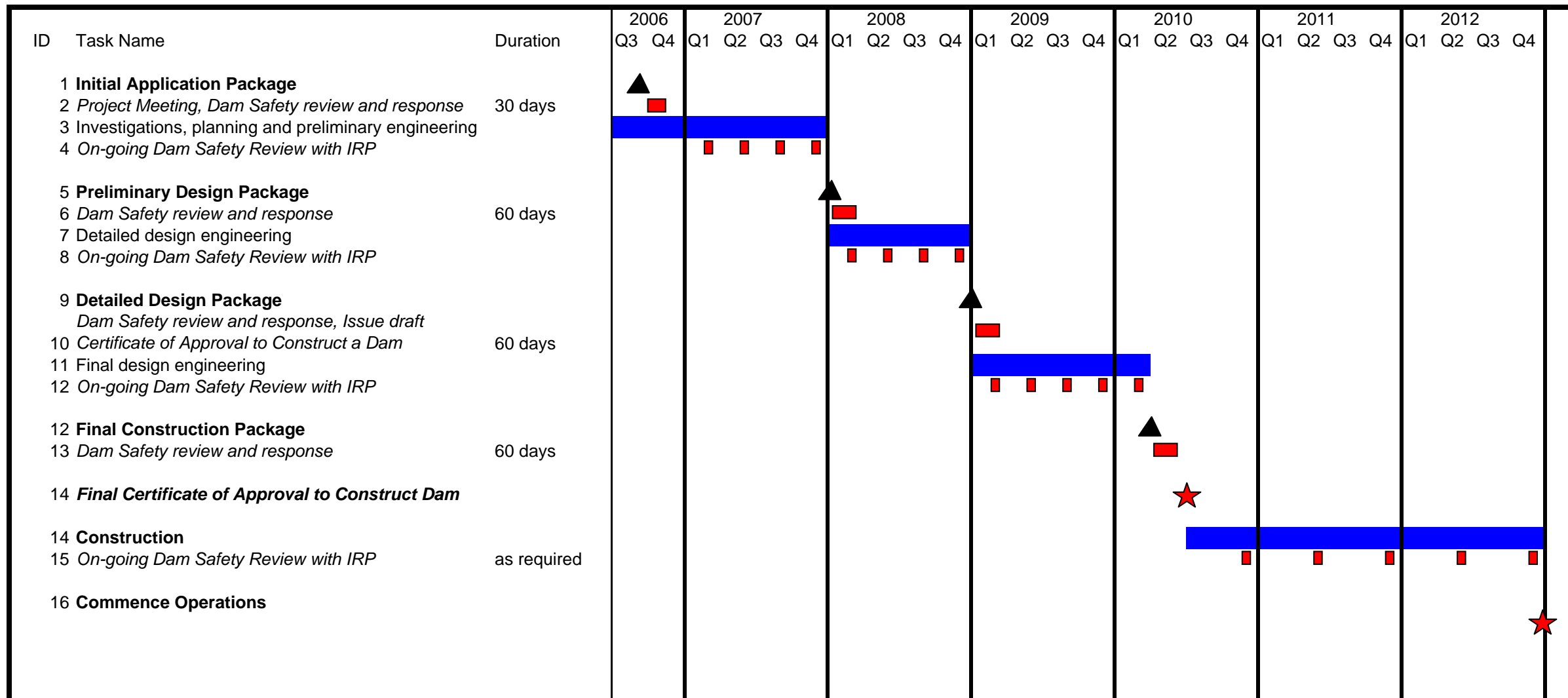
C:\P\101-176\101-176-176\101-176-176.dwg 11/15/10 11:51 AM 11/15/10 11:51 AM 11/15/10 11:51 AM




NOTES:

- 1) Total Storage Volume Includes Tailings, Supernatant Pond and Storm Containment
- 2) Embankment Crest Elevation Includes 10 ft. freeboard

NORTHERN DYNASTY MNES INC.		
PEBBLE PROJECT		
TAILINGS STORAGE FACILITY SITE G FILLING SCHEDULE		
<i>Knight Piésold</i> CONSULTING	PROJECT / ASSIGNMENT NO. VA101-176/16	REF NO. 12
	FIGURE 5.3	
		REV. 0



NORTHERN DYNASTY MINES INC		
PEBBLE PROJECT		
TAILINGS IMPOUNDMENT G - INITIAL APPLICATION REPORT DAM SAFETY APPLICATION AND REVIEW PROCESS		
	PROJECT / ASSIGNMENT NO. VA101-176/16	REF NO. 12
	FIGURE 5.4	
		REV. 0

Rev 0 - Issued for Report