

Appendix F

Kensington Project List of Mining Claims

Appendix F List of Mining Claims Associated with the Kensington Gold Project

The Kensington Gold Project comprises two contiguous land groups; the Kensington and Jualin properties. The Kensington property consists of 51 patented lode claims (Table F-2) covering approximately 760 acres, 369 federal unpatented lode claims (Table F-4) covering approximately 5,100 acres, and seven State of Alaska unpatented lode claims (Table F-7) covering approximately 110 acres. The Federal and State claims, as well as the patented lode claims, provide Coeur with the necessary rights to mine and process ore from Kensington.

The Kensington deposit (including the Horrible Vein) is secured by patented lode claims. Forty-nine of these are held through an agreement with the Kensington Trust. The other two patented claims are held through an option to purchase with no royalties.

The Jualin Property consists of 21 patented lode claims (Table F-3) covering approximately 360 acres, 463 federal unpatented lode claims (Tables F-5 and F-6) covering approximately 7,810 acres, and 15 State of Alaska unpatented lode claims (Table F-8) covering approximately 260 acres. Coeur holds the Jualin property through a mining lease with Hyak Mining Company, a local firm, based in Juneau, Alaska. The claims controlled by Coeur, as part of the Kensington Gold Project, are located in all or part of the following sections:

**Table F-1
Legal Description for Claim Locations**

Township, Range	Sections
T36S, R62E	26, 27, 28, 29, 30, 31, 32, 33, 34, 35
T35S, R62E	1, 2, 3, 4, 5, 6, 7, 8, 9, 10, 11, 12, 13, 14, 15, 16, 17, 21, 22, 23, 24, 25, 26, 27, 35, 36
T34S, R62E	1, 2
All locations are within the Copper River Meridian.	

Figure F-1 shows the extent of claims controlled by Coeur Alaska in relation to the existing and proposed mine development. This figure also shows existing underground workings centered around the targeted, economic mineralization, the location of Kensington camp at Comet Beach, proposed plant site and tailings deposition locations, and existing roads for access to underground workings and to the proposed plant site.

Figure F-1
Claim Boundaries Map

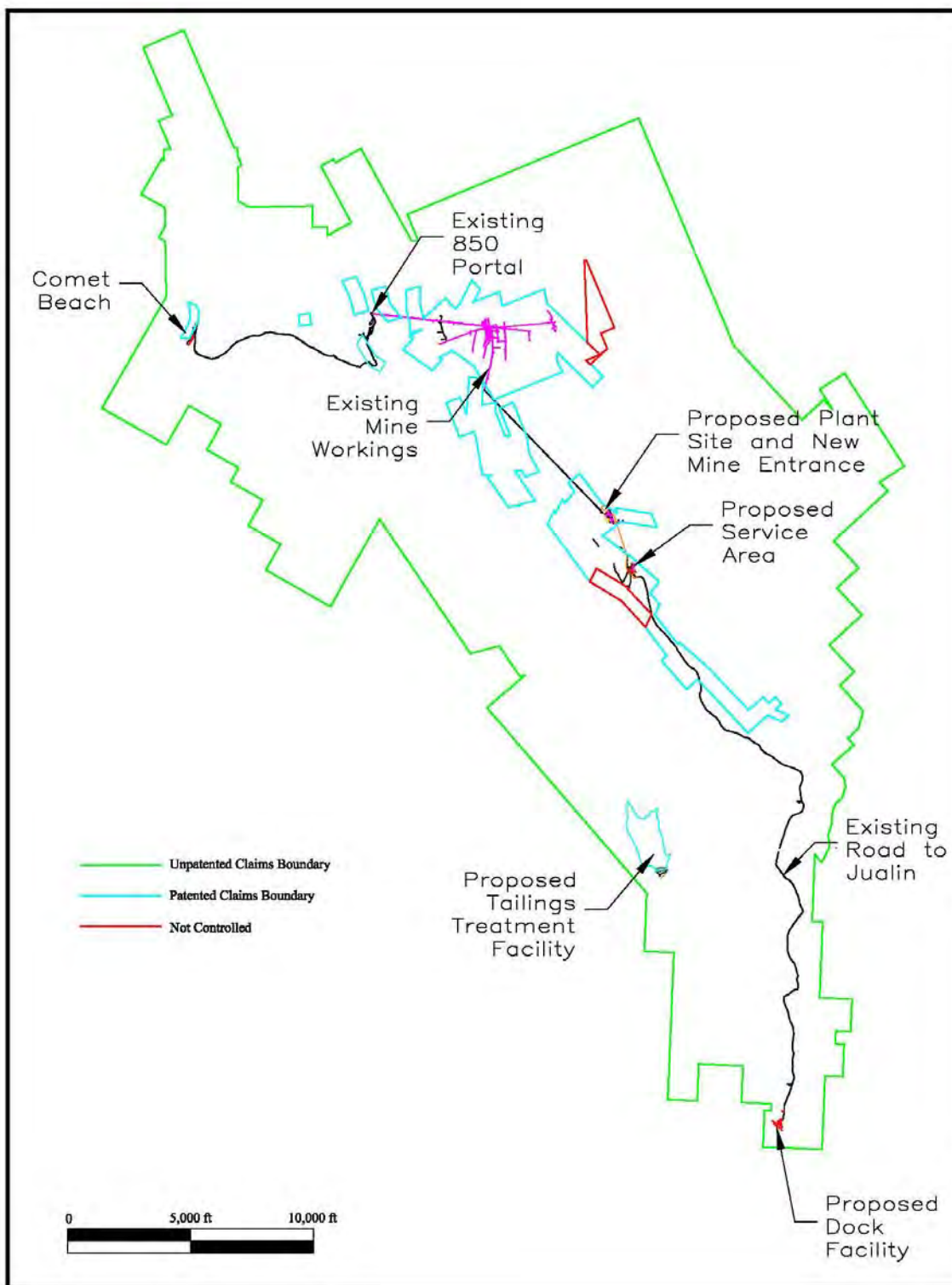


Table F-2
Kensington Patented Claims List

NAME OF CLAIM	U.S. PATENT NO.	M.S. NUMBER
HARVARD LODE (HARTFORD)	24661	
OPHIR LODE	24265	37-A
OPHIR MILLSITE	24265	37-B
BEAR LODE	24324	38-A
SAVAGE LODE	24324	39
BEAR NO.2 MILLSITE	24324	38-B
ELMIRA LODE	25362 (M.C. 47)	42
NORTHERN BELLE LODE	25362 (M.C. 47)	43
YELLOW JACKET LODE	25362 (M.C. 47)	44
KENSINGTON LODE	25362 (M.C. 47)	45
EUREKA LODE	25362 (M.C. 47)	46
ESMERALDA LODE	24662	47-A
EXCELSIOR LODE	24662	48
NORTHWEST LODE	24662	49
ESMERALDA MILLSITE	24662	47-B
NORTHERN LIGHT LODE	36096	380
NORTHERN LIGHT EXT. #1 LODE	36096	380
NORTHERN LIGHT EXT. #2 LODE	36096	380
SEWARD LODE	24660	40-A
SEWARD NO. 2 LODE	24660	41
CUMERLAND (CUMBERLAND) LODE	24660	50-A
COMET LODE	24660	51
THOMAS LODE	24660	52-A
POOR RICHARD LODE	24660	53
COMET EXTENSION LODE	24660	54-A
SNOWFLAKE LODE	24660	55
LAST CHANCE LODE	24660	56
BANNER LODE	24660	57
ECLIPSE LODE	24660	58
SEWARD MILLSITE	24660	40-B
CUMERLAND (CUMBERLAND) MILLSITE	24660	50-B
THOMAS MILLSITE	24660	52-B
COMET EXTENSION MILLSITE	24660	54-B
PLUCKY GIRL FRAC. LODE	1116607	2018
PLUCKY BOY FRAC. LODE (LUCKY BOY)	1116607	2018
ARNOLD LODE	1116607	2018
STANLEY LODE	1117017	2015
BEE LODE	1117017	2015
LIONS PAW #1 LODE	1117017	2015
LIONS PAW #2 LODE	1117017	2015
LIONS PAW #3 LODE	1117017	2015
LIONS PAW #4 LODE	1117017	2015
LIONS TAIL LODE	1117017	2015
BAT LODE	1117017	2015
LIONS PAW LODE	1117017	2015
OLGA #1 LODE	1117017	2015
OLGA #2 LODE	1117017	2015
OLGA #3 LODE	1117017	2015
OLGA #4 LODE	1117017	2015
MEXICAN LODE	26398	61
HORRIBLE	MINERAL CERTIFICATE 54	60

All claims in Table F-1 are part of the Kensington Trust except the Mexican Lode and the Horrible.

Table F-3

Jualin Patented Claims List

<u>PATENTED CLAIM</u>
Banshee Lode
Cover Lode
Grace R. Lode
Hard Scrabble Load
Humming Bird Lode
Independence Lode
Indomitable Lode
Jean Burke Lode
Lucky Chance Lode
Minerva Lode
Mystery Lode
Mystery Lode Millsite
Ophir Lode
Perhaps Lode
Rose Lode
Rover Lode
Thomas Millsite
Trixie Lode
Undine Lode
Victor Lode
Wonder Lode

Note that Kensington and Jualin patented claims have mineral surveys.

Table F-4

Kensington Federal Unpatented Claims List

<u>Claim Name</u>	<u>BLM Serial No.</u>	<u>Claim Name</u>	<u>BLM Serial No.</u>
BIG SEVEN NO. 1	AA-44961	COMET #58	AA-61450
BIG SEVEN NO. 2	AA-44962	COMET #59	AA-61451
BIG SEVEN NO. 3	AA-65035	COMET #60	AA-61452
BIG SEVEN NO. 12	AA-46193	COMET #61	AA-61453
BIG SEVEN NO. 13	AA-46194	COMET #62	AA-61454
BIG SEVEN NO. 14	AA-46195	COMET #63	AA-61455
BIG SEVEN NO. 15	AA-46196	COMET #64	AA-61456
BIG SEVEN NO. 16	AA-46197	COMET #65	AA-61457
BIG SEVEN NO. 17	AA-50980	COMET #66	AA-61458
BIG SEVEN NO. 18	AA-50981	COMET #67	AA-61459
BIG SEVEN NO. 24	AA-50987	COMET #68	AA-61460
BIG SEVEN NO. 25	AA-50988	COMET #69	AA-61461
BIG SEVEN NO. 31	AA-50994	COMET #70	AA-61462
BIG SEVEN NO. 37	AA-51000	COMET #71	AA-61463
BIG SEVEN FRACTION 1	AA-44958	COMET #72	AA-61464
BIG SEVEN FRACTION 2	AA-44959	COMET #73	AA-61465
BIG SEVEN FRACTION 3	AA-44960	COMET #74	AA-61466
COMET #1	AA-61393	COMET #75	AA-61467
COMET #2	AA-61394	COMET #76	AA-61468
COMET #3	AA-61395	COMET #77	AA-61469
COMET #4	AA-61396	COMET #78	AA-61470
COMET #5	AA-61397	COMET #79	AA-61471
COMET #6	AA-61398	COMET #80	AA-61472
COMET #12	AA-61404	COMET #81	AA-61473
COMET #13	AA-61405	COMET #82	AA-61474
COMET #19	AA-61411	COMET #83	AA-61475
COMET #20	AA-61412	COMET #84	AA-61476
COMET #26	AA-61418	COMET #85	AA-61477
COMET #27	AA-61419	COMET #86	AA-61478
COMET #33	AA-61425	COMET #87	AA-61479
COMET #34	AA-61426	COMET #88	AA-61480
COMET #35	AA-61427	COMET #89	AA-61481
COMET #36	AA-61428	COMET #90	AA-61482
COMET #37	AA-61429	COMET #91	AA-61483
COMET #38	AA-61430	COMET #92	AA-61484
COMET #39	AA-61431	COMET #93	AA-61485
COMET #40	AA-61432	COMET #94	AA-61486
COMET #41	AA-61433	COMET #95	AA-61487
COMET #42	AA-61434	COMET #96	AA-61488
COMET #43	AA-61435	COMET #97	AA-61489
COMET #44	AA-61436	COMET #98	AA-61490
COMET #45	AA-61437	COMET #99	AA-61491
COMET #46	AA-61438	COMET #100	AA-61492
COMET #47	AA-61439	COMET #101	AA-61493
COMET #48	AA-61440	COMET #102	AA-61494
COMET #49	AA-61441	COMET #103	AA-61495
COMET #50	AA-61442	COMET #104	AA-61496
COMET #51	AA-61443	COMET #105	AA-61497
COMET #52	AA-61444	COMET #106	AA-61498
COMET #53	AA-61445	COMET #107	AA-61499
COMET #54	AA-61446	COMET #108	AA-61500
COMET #55	AA-61447	COMET #109	AA-61501
COMET #56	AA-61448	COMET #110	AA-61502
COMET #57	AA-61449	COMET #111	AA-61503

Table F-4 (Continued)

<u>Claim Name</u>	<u>BLM Serial No.</u>	<u>Claim Name</u>	<u>BLM Serial No.</u>
COMET #112	AA-61504	RELOCATED	AA-61671
COMET #113	AA-61505	POX 6	AA-61059
COMET #114	AA-61506	RELOCATED	AA-61672
COMET #115	AA-61507	POX 7	AA-61060
COMET #116	AA-61508	RELOCATED	AA-61673
COMET #117	AA-61509	POX 8	AA-61061
COMET #118	AA-61510	RELOCATED	AA-61674
COMET #119	AA-61511	POX 9	AA-61062
COMET #211	AA-64393	RELOCATED	AA-61675
COMET #212	AA-64394	POX 10	AA-61063
COMET #213	AA-64395	RELOCATED	AA-61676
COMET #214	AA-64396	POX 11	AA-61064
COMET #215	AA-64397	RELOCATED	AA-61677
COMET #216	AA-64398	POX 12	AA-61065
COMET #217	AA-64399	RELOCATED	AA-61678
COMET #218	AA-64400	POX 13	AA-61066
COMET #219	AA-64401	RELOCATED	AA-61679
COMET #220	AA-64402	POX 14	AA-61067
COMET #221	AA-64403	RELOCATED	AA-61680
COMET #222	AA-64404	POX 15	AA-61068
COMET #223	AA-64405	POX 16	AA-61069
COMET #250	AA-71812	POX 17	AA-61070
COMET #251	AA-71813	POX 18	AA-61071
COMET #252	AA-71814	POX 19	AA-61072
COMET #253	AA-71815	POX 20	AA-61073
COMET #254	AA-71816	POX 21	AA-61074
COMET #255	AA-71817	POX 22	AA-61075
COMET #256	AA-71818	RELOCATED	AA-61681
COMET #257	AA-71819	POX 23	AA-61076
COMET #258	AA-71820	RELOCATED	AA-61682
COMET #259	AA-71821	POX 24	AA-61077
COMET #260	AA-71822	POX 25	AA-61078
COMET #261	AA-71823	POX 26	AA-61079
COMET #262	AA-71824	POX 27	AA-61080
COMET #263	AA-71825	POX 28	AA-61081
COMET #264	AA-71826	POX 29	AA-61082
COMET #265	AA-71827	POX 30	AA-61083
COMET #266	AA-71828	POX 31	AA-61084
COMET #267	AA-71829	POX 32	AA-61085
COMET #268	AA-71830	POX 33	AA-61086
COMET #269	AA-71831	POX 34	AA-61087
COMET #270	AA-71832	POX 35	AA-61088
COMET #271	AA-71833	POX 36	AA-61089
COMET #272	AA-71834	POX 37	AA-61090
COMET #273	AA-71805	POX 38	AA-61091
COMET #274	AA-71811	POX 39	AA-61092
COMET #275	AA-71835	POX 40	AA-61093
COMET #300	AA-77283	POX 41	AA-61094
COMET #301	AA-77281	POX 42	AA-61095
COMET #302	AA-77282	RELOCATED	AA-61683
POX 1	AA-61054	POX 43	AA-61096
POX 2	AA-61055	POX 44	AA-61097
POX 3	AA-61056	POX 45	AA-61098
POX 4	AA-61057	POX 46	AA-61099
POX 5	AA-61058		

Table F-4 (Continued)

<u>Claim Name</u>	<u>BLM Serial No.</u>	<u>Claim Name</u>	<u>BLM Serial No.</u>
KNS #14	AA-42180	KNS #53 FRACTION	AA-42219
KNS #15	AA-42181	KNS #54 FRACTION	AA-42220
KNS #16	AA-42182	KNS #55	AA-42221
KNS #17	AA-42183	KNS #56	AA-42222
KNS #18	AA-42184	KNS #57	AA-42223
KNS #19 FRACTION	AA-42185	KNS #58	AA-42224
KNS #20 FRACTION	AA-42186	KNS #59	AA-42225
KNS #21 FRACTION	AA-42187	KNS #60	AA-42226
KNS #22	AA-42188	KNS #61	AA-42227
KNS #23	AA-42189	KNS #62	AA-42228
KNS #24	AA-42190	KNS #63 FRACTION	AA-44071
KNS #25 FRACTION	AA-42191	KNS #64	AA-42230
KNS #26 FRACTION	AA-42192	KNS #64 FRACTION	AA-44072
KNS #27 FRACTION	AA-42193	KNS #65	AA-42231
KNS #28 FRACTION	AA-42194	KNS #66	AA-42232
KNS #29 FRACTION	AA-42195	KNS #67	AA-42233
KNS #30 FRACTION	AA-42196	KNS #68	AA-42234
KNS #31 FRACTION	AA-42197	KNS NO. 71	AA-44948
KNS #32 FRACTION	AA-42198	KNS NO. 72	AA-44949
KNS #33 FRACTION	AA-42199	KNS NO. 73	AA-44950
KNS #34 FRACTION	AA-42200	KNS FRACTION NO. 74	AA-44951
KNS #35 FRACTION	AA-42201	KNS NO. 79	AA-44956
KNS #36 FRACTION	AA-42202	KNS NO. 80	AA-44957
KNS #37 FRACTION	AA-42203	KNS NO. 81 FRACTION	AA-051009
KNS #38 FRACTION	AA-42204	KNS NO. 100 FRACTION	AA-062965
KNS #39 FRACTION	AA-42205	COVER LODE	AA-069981
KNS #40	AA-42206	JOHNSON NO. 1	AA-78931
KNS #41 FRACTION	AA-42207	JOHNSON NO. 2	AA-78932
KNS #42 FRACTION	AA-42208	JOHNSON NO. 3	AA-78933
		JOHNSON NO. 4	
KNS #43 FRACTION	AA-42209	FRACTION	AA-78934
		JOHNSON NO. 5	
KNS #44	AA-42210	FRACTION	AA-78935
KNS #45 FRACTION	AA-42211	CONVEN NO. 1	AA-78936
KNS #46 FRACTION	AA-42212	CONVEN NO. 2	AA-78937
KNS #47 FRACTION	AA-42213	CONVEN NO. 3 FRACTION	AA-78938
KNS #48 FRACTION	AA-42214	CONVEN NO. 4 FRACTION	AA-78939
KNS #49 FRACTION	AA-42215	SNOWSLIDE NO. 1	AA-78940
KNS #50 FRACTION	AA-42216	SLATE NO. 1 FRACTION	AA-78941
KNS #51 FRACTION	AA-42217	SLATE NO. 2 FRACTION	AA-78942
KNS #52 FRACTION	AA-42218		

Table F-5

Jualin (Coeur) Federal Unpatented Claims List

CLAIM NAME	BLM SERIAL NO.	CLAIM NAME	BLM SERIAL NO.
MM FRACTION 1	AA 061920	BLOC #1	AA 062971
MM FRACTION 2	AA 061921	BLOC #2	AA 062972
MM FRACTION 3	AA 061922	BLOC #3	AA 062973
MM FRACTION 4	AA 061923	BLOC #4	AA 062974
INDOMITABLE FRACTION	AA 061924	BLOC #5	AA 062975
GREEK BOY #1	AA 060988	BLOC #6	AA 062976
GREEK BOY #2	AA 060989	BLOC #7	AA 062977
GREEK BOY #3	AA 060990	BLOC #8	AA 062978
GREEK BOY #4	AA 060991	BLOC #13	AA 062983
GREEK BOY #5	AA 060992	BLOC #14	AA 062984
GREEK BOY #6	AA 060993	BLOC #25	AA 062995
GREEK BOY #7	AA 060994	BLOC #26	AA 062996
GREEK BOY #8	AA 060995	BLOC #37	AA 063007
E.J. #3	AA 061899	BLOC #38	AA 063008
E.J. #4	AA 061900	BLOC #49	AA 063019
E.J. #5	AA 061901	BLOC #50	AA 063020
E.J. #6	AA 061902	BLOC #61	AA 063031
E.J. #7	AA 061903	BLOC #62	AA 063032
E.J. #8	AA 061904	MM #1	AA 061583
E.J. #15	AA 061905	MM #2	AA 061584
E.J. #16	AA 061906	MM #3	AA 061585
E.J. #17	AA 061907	MM #4	AA 061586
E.J. #18	AA 061908	MM #5	AA 061587
E.J. #18S	AA 061909	MM #6	AA 061588
E.J. #19	AA 061910	MM #7	AA 061589
E.J. #20	AA 061911	MM #8	AA 061590
E.J. #20S	AA 061912	MM #9	AA 061591
E.J. #21	AA 061913	MM #10	AA 061592
KY #1	AA 063648	MM #11	AA 061593
KY #2	AA 063649	MM #12	AA 061594
KY #3	AA 063650	MM #13	AA 061595
KY #4	AA 063651	MM #14	AA 061596
KY #8	AA 063655	MM #15	AA 061597
KY #9	AA 063656	MM #16	AA 061598
KY #10	AA 063657	MM #17	AA 061599
KY #11	AA 063658	MM #18	AA 061600
KY #17	AA 063664	MM #19	AA 061601
KY #18	AA 063665	MM #20	AA 061602
KY #19	AA 063666	MM #21	AA 061603
KY #20	AA 063667	MM #22	AA 061604
KY #21	AA 063668	MM #23	AA 061605
KY #22	AA 063669	MM #24	AA 061606
KY #27	AA 063674	MM #25	AA 061607
KY #28	AA 063675	MM #26	AA 061608
KY #29	AA 063676	MM #27	AA 061609
KY #30	AA 063677	MM #28	AA 061610
KY #37	AA 063684	MM #29	AA 061611
KY #38	AA 063685	MM #30	AA 061612
KY #39	AA 063686	MM #31	AA 061613
KY #40	AA 063687	MM #32	AA 061614
KY #47	AA 063694	MM #33	AA 061615
KY #48	AA 063695	MM #34	AA 061616
KY #49	AA 063696	MM #35	AA 061617
KY #50	AA 063697	MM #36	AA 061618

Table F-5 (Continued)

CLAIM NAME	BLM SERIAL NO.	CLAIM NAME	BLM SERIAL NO.
MM #37	AA 061619	SLATE CREEK #5	AA 061803
MM #38	AA 061620	SLATE CREEK #6	AA 061804
MM #39	AA 061621	SLATE CREEK #7	AA 061805
MM #40	AA 061622	SLATE CREEK #8	AA 061806
MM #41	AA 061623	SLATE CREEK #9	AA 061807
MM #42	AA 061624	SLATE CREEK #10	AA 061808
MM #43	AA 061625	SLATE CREEK #11	AA 061809
MM #44	AA 061626	SLATE CREEK #12	AA 061810
MM #45	AA 061627	SLATE CREEK #13	AA 061811
MM #46	AA 061628	SLATE CREEK #14	AA 061812
MM #47	AA 061629	SLATE CREEK #18	AA 061813
MM #48	AA 061630	SLATE CREEK #19	AA 061814
MM #49	AA 061631	SLATE CREEK #20	AA 061815
MM #50	AA 061632	SLATE CREEK #21	AA 061816
MM #51	AA 061633	SLATE CREEK #22	AA 061817
MM #52	AA 061634	SLATE CREEK #23	AA 061818
MM #53	AA 061635	SLATE CREEK #24	AA 061819
MM #54	AA 061636	SLATE CREEK #25	AA 061820
MM #55	AA 061637	SLATE CREEK #26	AA 061821
MM #56	AA 061638	SLATE CREEK #27	AA 061822
MM #57	AA 061639	SLATE CREEK #28	AA 061823
MM #58	AA 061640	SLATE CREEK #29	AA 061824
MM #59	AA 061641	SLATE CREEK #30	AA 061825
MM #60	AA 061642	SLATE CREEK #31	AA 061826
MM #61	AA 061643	SLATE CREEK #32	AA 061827
MM #62	AA 061644	SLATE CREEK #33	AA 061828
MM #63	AA 061645	SLATE CREEK #34	AA 061829
MM #64	AA 061646	SLATE CREEK #35	AA 061830
MM #65	AA 061647	SLATE CREEK #36	AA 061831
MM #66	AA 061648	SLATE CREEK #37	AA 061832
MM #67	AA 061649	SLATE CREEK #38	AA 061833
MM #68	AA 061650	SLATE CREEK #42	AA 061837
MM #69	AA 061651	SLATE CREEK #43	AA 061838
MM #70	AA 061652	SLATE CREEK #44	AA 061839
MM #71	AA 061653	SLATE CREEK #45	AA 061840
MM #72	AA 061654	SLATE CREEK #46	AA 061841
MM #73	AA 061655	SLATE CREEK #47	AA 061842
MM #74	AA 061656	SLATE CREEK #48	AA 061843
MM #75	AA 061657	SLATE CREEK #49	AA 061844
MM #76	AA 061658	SLATE CREEK #50	AA 061845
MM #77	AA 061659	SLATE CREEK #51	AA 061846
MM #78	AA 061660	SLATE CREEK #52	AA 061847
MM #79	AA 061661	SLATE CREEK #53	AA 061848
MM #80	AA 061662	SLATE CREEK #63	AA 061849
MM #81	AA 061663	SLATE CREEK #64	AA 061850
MM #82	AA 061664	SLATE CREEK #65	AA 061851
SLATE CREEK #3	AA 061801	SLATE CREEK #68	AA 061854
SLATE CREEK #4	AA 061802	SLATE CREEK #69	AA 061855

Table F-5 (Continued)

CLAIM NAME	BLM SERIAL NO.	CLAIM NAME	BLM SERIAL NO.
SLATE CREEK #69	AA 061855	MANE 100	AA 072004
SLATE CREEK #70	AA 061856	MANE 101	AA 072005
SLATE CREEK #82	AA 061859	MANE 102	AA 072006
SLATE CREEK #83	AA 061860	MANE 103	AA 072007
SLATE CREEK #84	AA 061861	MANE 104	AA 072008
SLATE CREEK #85	AA 061862	MANE 105	AA 072009
SLATE CREEK #86	AA 061863	MANE 106	AA 072010
SLATE CREEK #87	AA 061864	MANE 107	AA 072011
SLATE CREEK #88	AA 061865	MANE 108	AA 072012
SLATE CREEK #89	AA 061866	MANE 128	AA 072026
SLATE CREEK #90	AA 061867	MANE 129	AA 072027
SLATE CREEK #94	AA 061869	MANE 130	AA 072028
SLATE CREEK #95	AA 061870	MANE 131	AA 072029
SLATE CREEK #96	AA 061871	MANE 132	AA 072030
SLATE CREEK #97	AA 061872	MANE 133	AA 072031
MANE 8	AA 071931	MANE 134	AA 072032
MANE 9	AA 071932	MANE 135	AA 072033
MANE 10	AA 071933	MANE 136	AA 072034
MANE 11	AA 071934	MANE 137	AA 072035
MANE 12	AA 071935	MANE 138	AA 072036
MANE 28	AA 071943	MANE 139	AA 072037
MANE 29	AA 071944	MANE 140	AA 072038
MANE 30	AA 071945	MANE 141	AA 072039
MANE 31	AA 071946	MANE 142	AA 072040
MANE 32	AA 071947	MANE 143	AA 072041
MANE 33	AA 071948	MANE 144	AA 072042
MANE 34	AA 071949	MANE 158	AA 072050
MANE 35	AA 071950	MANE 159	AA 072051
MANE 48	AA 071960	MANE 160	AA 072052
MANE 49	AA 071961	MANE 161	AA 072053
MANE 50	AA 071962	MANE 162	AA 072054
MANE 51	AA 071963	MANE 163	AA 072055
MANE 52	AA 071964	MANE 164	AA 072056
MANE 53	AA 071965	MANE 165	AA 072057
MANE 54	AA 071966	MANE 166	AA 072058
MANE 68	AA 071978	MANE 167	AA 072059
MANE 69	AA 071979	MANE 168	AA 072060
MANE 70	AA 071980	MANE 169	AA 072061
MANE 71	AA 071981	MANE 170	AA 072062
MANE 72	AA 071982	MANE 171	AA 072063
MANE 73	AA 071983	MANE 172	AA 072064
MANE 74	AA 071984	MANE 173	AA 072065
MANE 98	AA 072002	MANE 174	AA 072066
MANE 99	AA 072003		

Table F-6

Jualin (Hyak) Federal Unpatented Claims List

CLAIM NAME	BLM SERIAL NO.	CLAIM NAME	BLM SERIAL NO.
Maria A Lode	AA 043684	Une	AA 045020
Maria B Lode	AA 043685	Contact No. 8	AA 045021
Maria C Lode	AA 043686	Contact No. 7	AA 045022
Thomas Fraction No. 6			
Lode	AA 043687	Contact No. 6	AA 045023
Maria J Lode	AA 043688	Contact No. 11	AA 045024
Maria K Lode	AA 043689	Contact 111	AA 045025
Maria L Lode	AA 043690	Contact 1111	AA 045026
Maria Y Lode	AA 043691	Contact 1113	AA 045027
Maria Z Lode	AA 043692	Contact 1112	AA 045028
Contact No. 1	AA 043693	Contact 113	AA 045029
Contact No. 2 Lode	AA 043694	Contact 112	AA 045030
Contact No. 3 Lode	AA 043695	Contact No. 18	AA 045031
Contact No. 4	AA 043696	Contact No. 17	AA 045032
Contact No. 5 Lode	AA 043697	Contact No. 16	AA 045033
Thomas No. 8 Lode	AA 043698	Contact No. 15	AA 045034
Thomas No. 1 Lode	AA 043887	Contact No. 14	AA 045035
Thomas No. 2 Lode	AA 043888	Contact No. 13	AA 045036
Thomas No. 3 Lode	AA 043889	Contact No. 12	AA 045037
Thomas No. 4	AA 043890	Martha Extension	AA 045668
Thomas No. 5	AA 043891	Brownie	AA 045669
Thomas No. 6 Lode	AA 043892	Sewanee	AA 045670
Thomas No. 7 Lode	AA 043893	Drake Esquire	AA 045671
Thomas Fraction	AA 043894	Maria G Extension	AA 045672
Thomas Millsite	AA 043895	Mr. Cheney	AA 045673
Maria D Lode	AA 043896	Pretty Patti Fraction	AA 045674
Maria E Lode	AA 043897	Mr. Frost Fraction	AA 045675
Maria F Lode	AA 043898	Contact 118 Fraction	AA 045676
Maria G Lode	AA 043899	Contact 1114	AA 045677
Maria H Lode	AA 043900	Contact 114	AA 045678
Maria I Lode	AA 043901	Contact 115	AA 045679
Maria F Extension	AA 043902	Contact 1115	AA 045680
Martha	AA 043903	Contact 1116	AA 045681
Poncin	AA 043904	Contact 116	AA 045682
Sue Dean	AA 045000	Contact 117	AA 045683
COONJOHN	AA 045002	Contact 1117	AA 045684
		Contact 1118	
Sally	AA 045003	Fraction	AA 045685
Christina	AA 045004	Jana	AA 045686
Stacey Fraction	AA 045005	Denise	AA 045687
Margen Fraction	AA 045006	Monica	AA 045688
Kristen	AA 045007	Carolyn	AA 045689
Robert 3	AA 045009	Shannon	AA 045690
Robert Fraction No. 2	AA 045010	Lisa	AA 045692
Robert 4	AA 045011	Robinson	AA 045693
Leo Stewart Fraction	AA 045014	Drake	AA 045694
Cinq	AA 045015	Frost	AA 045695
Deuze	AA 045016	Wiley Fraction	AA 045696
Neuf	AA 045017	Annie Fraction	AA 045697
Deux	AA 045018	Sara	AA 045698
Une Fraction	AA 045019	Kathryn	AA 045699

Table F-6 (Continued)

<u>CLAIM NAME</u>	<u>BLM SERIAL NO.</u>	<u>CLAIM NAME</u>	<u>BLM SERIAL NO.</u>
Annie Fraction 2	AA 045700	DZ-20	AA 054422
Sandy Anne Fraction	AA 045701	DZ-21	AA 054423
Sara Fraction	AA 045702	DZ-22	AA 054424
Kathryn Fraction	AA 045703	DZ-23	AA 054425
Robert 1	AA 050215	DZ-24	AA 054426
Robert 2	AA 050216	ZACH 1	AA 77798
Robert Fraction	AA 050217	ZACH 2	AA 77799
DZ-1	AA 054403	ZACH 3	AA 77800
DZ-2	AA 054404	ZACH 4	AA 77801
DZ-3	AA 054405	ZACH 5	AA 77802
DZ-4	AA 054406	ZACH 6	AA 77803
DZ-5	AA 054407	ZACH 7	AA 77804
DZ-6	AA 054408	ZACH 8	AA 77805
DZ-7	AA 054409	ZACH 9	AA 77806
DZ-8	AA 054410	ZACH 10	AA 77807
DZ-9	AA 054411	ZACH 11	AA 77808
DZ-10	AA 054412	ZACH 12	AA 77809
DZ-11	AA 054413	ZACH 13	AA 77810
DZ-12	AA 054414	ZACH 14	AA 77811
DZ-13	AA 054415	LAKE 1	AA 77812
DZ-14	AA 054416	LAKE 2	AA 77813
DZ-15	AA 054417	LAKE 3	AA 77814
DZ-16	AA 054418	LAKE 4	AA 77815
DZ-17	AA 054419	LAKE 5	AA 77816
DZ-18	AA 054420	LAKE 6	AA 77817
DZ-19	AA 054421		

Table F-7

Kensington State of Alaska Unpatented Claims List

<u>Claim Name</u>	<u>Number</u>
KNS 65 FRACTION	ADL 337383
KNS 66 FRACTION	ADL 337384
KNS 67 FRACTION	ADL 337385
KNS 68 FRACTION	ADL 337386
KNS 69 FRACTION	ADL 337387
KNS 70 FRACTION	ADL 337388
ELLEN	ADL 514549

Table F-8

Jualin State of Alaska Unpatented Claims List

<u>Claim Name</u>	<u>Number</u>
Lucky Chance	ADL 349102
Hyak No. 1 Amended	ADL 309740
Hyak No. 2 Amended	ADL 309741
Hyak No. 3 Amended	ADL 309742
Hyak No. 4	ADL 323364
Hyak No. 5	ADL 323365
Hyak No. 6	ADL 323366
Hyak No. 7	ADL 323367
Hyak No. 8	ADL 323368
Hyak No. 9	ADL 503245
Hyak No. 10	ADL 503246
Hyak No. 10A	ADL 503247
Hyak No. 11	ADL 503248
Hyak No. 1A	ADL 509891
Hyak No. 1B	ADL 509892
Casey 12	ADL 563240