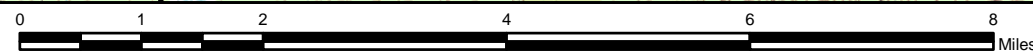


Produced by:
Alaska Department of Natural Resources
Division Mining Land and Water
Public Access Assertion & Defense Unit &
Alaska Department of Fish and Game

Takotna River

This map is based on the most recent data available; however the actual and/or historical location of the waters involved may differ from that shown on this map due to the changes in the waters over time.

The State of Alaska makes no expressed or implied warranties (including warranties of merchantability and fitness) with respect to the character, function, or capabilities of this product or its appropriateness for any user's purposes. In no event will the State of Alaska be liable for any incidental, indirect, special, consequential or other damages suffered by the user or any other person or entity whether from use of the product, any failure thereof or otherwise, and in no event will the State of Alaska's liability to you or anyone else exceed the fee paid for the product.



1:100,000

BASE MAP: USGS Iditarod, AK C-1 & C-2 1:63,360 Topographic Maps

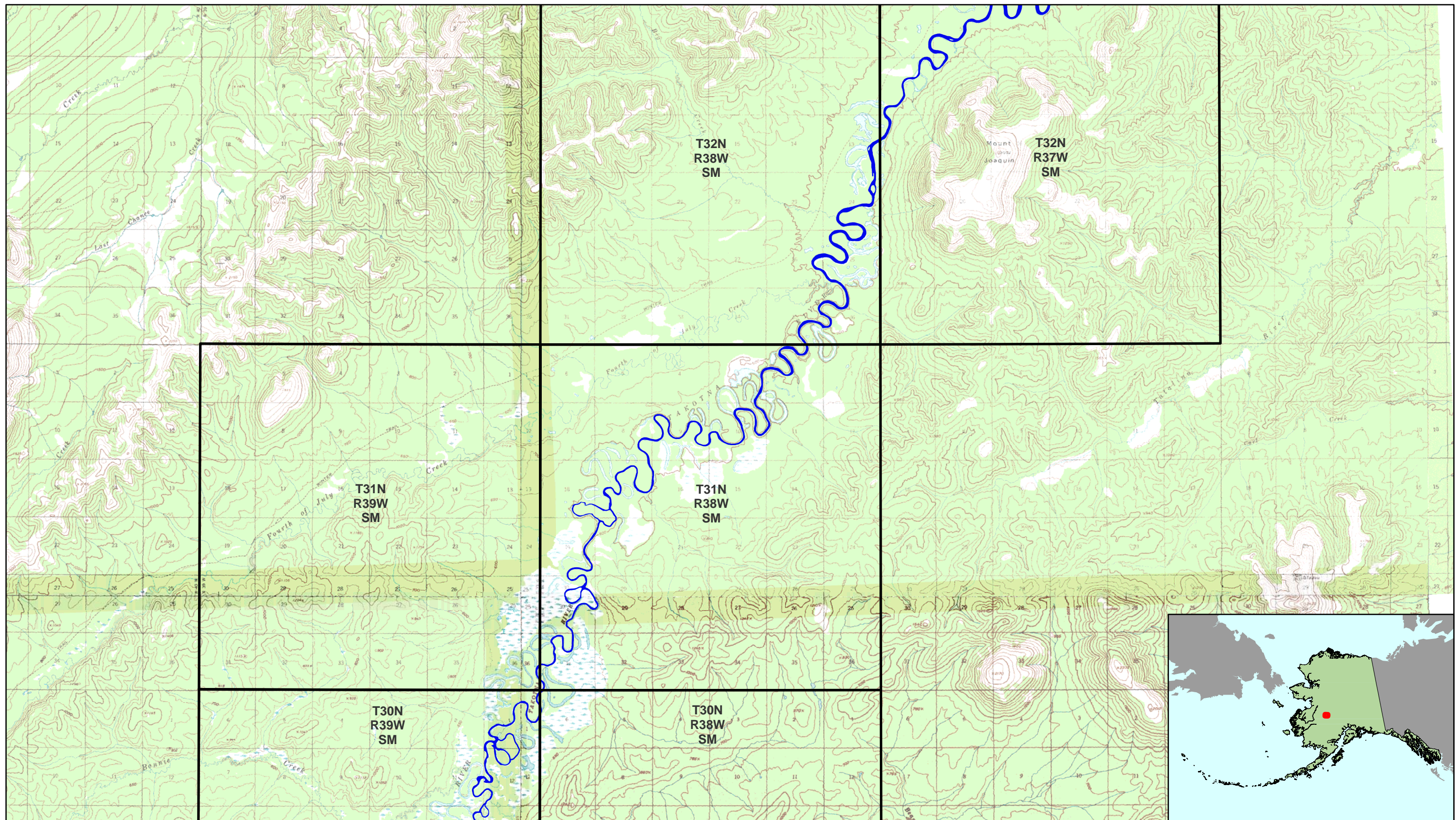
WATERBODY DATA: USGS National Hydrography Dataset - 2004

MAP PROJECTION: Albers Equal Area North American Datum 1983

Seward Meridian

Date Printed: March 10, 2006

~State of Alaska~
Recordable Disclaimer of Interest
Application
Takotna River
Map: 1 of 3

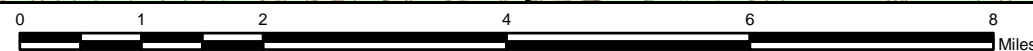


Produced by:
 Alaska Department of Natural Resources
 Division Mining Land and Water
 Public Access Assertion & Defense Unit &
 Alaska Department of Fish and Game

Takotna River

This map is based on the most recent data available; however the actual and/or historical location of the waters involved may differ from that shown on this map due to the changes in the waters over time.

The State of Alaska makes no expressed or implied warranties (including warranties of merchantability and fitness) with respect to the character, function, or capabilities of this product or its appropriateness for any user's purposes. In no event will the State of Alaska be liable for any incidental, indirect, special, consequential or other damages suffered by the user or any other person or entity whether from use of the product, any failure thereof or otherwise, and in no event will the State of Alaska's liability to you or anyone else exceed the fee paid for the product.



1:100,000

BASE MAP: USGS Iditarod, AK C-1, C-2, D-1 & D-2 1:63,360 Topographic Maps

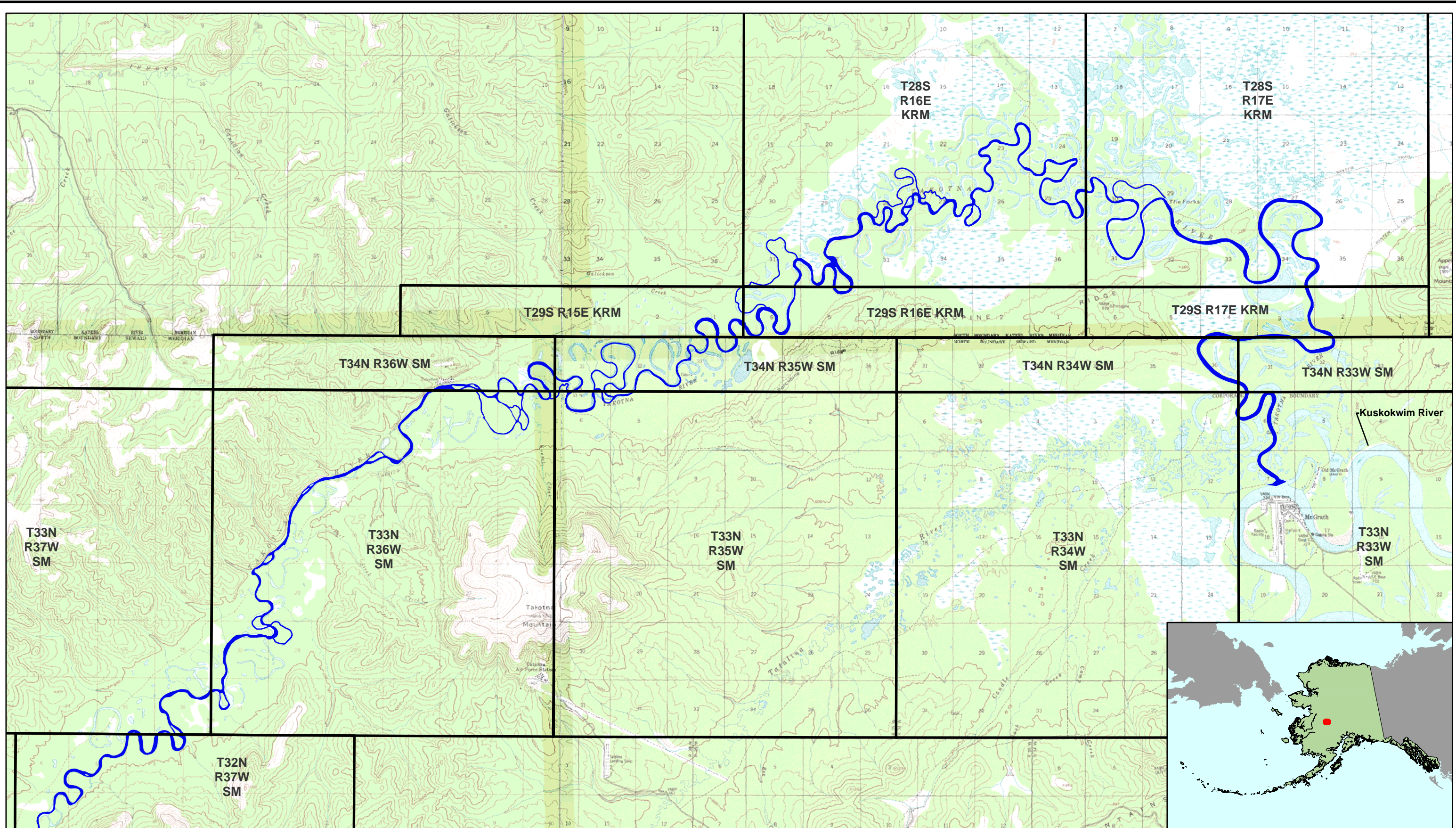
WATERBODY DATA: USGS National Hydrography Dataset - 2004

MAP PROJECTION: Albers Equal Area North American Datum 1983

Seward Meridian

Date Printed: March 10, 2006

~State of Alaska~
Recordable Disclaimer of Interest
Application
Takotna River
Map: 2 of 3

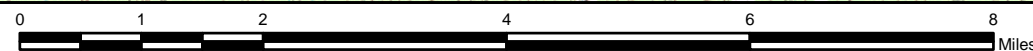


Produced by:
Alaska Department of Natural Resources
Division Mining Land and Water
Public Access Assertion & Defense Unit &
Alaska Department of Fish and Game

Takotna River

This map is based on the most recent data available; however the actual and/or historical location of the waters involved may differ from that shown on this map due to the changes in the waters over time.

The State of Alaska makes no expressed or implied warranties (including warranties of merchantability and fitness) with respect to the character, function, or capabilities of this product or its appropriateness for any user's purposes. In no event will the State of Alaska be liable for any incidental, indirect, special, consequential or other damages suffered by the user or any other person or entity whether from use of the product, any failure thereof or otherwise, and in no event will the State of Alaska's liability to you or anyone else exceed the fee paid for the product.



1:100,000

BASE MAP: USGS Iditarod D-1, McGrath D-6, Medfra A-6 & Ophir A-1, AK 1:63,360 Topographic Maps

WATERBODY DATA: USGS National Hydrography Dataset - 2004

MAP PROJECTION: Albers Equal Area North American Datum 1983

Kateel River & Seward Meridians

Date Printed: January 10, 2006

~State of Alaska~
Recordable Disclaimer of Interest
Application
Takotna River
Map: 3 of 3