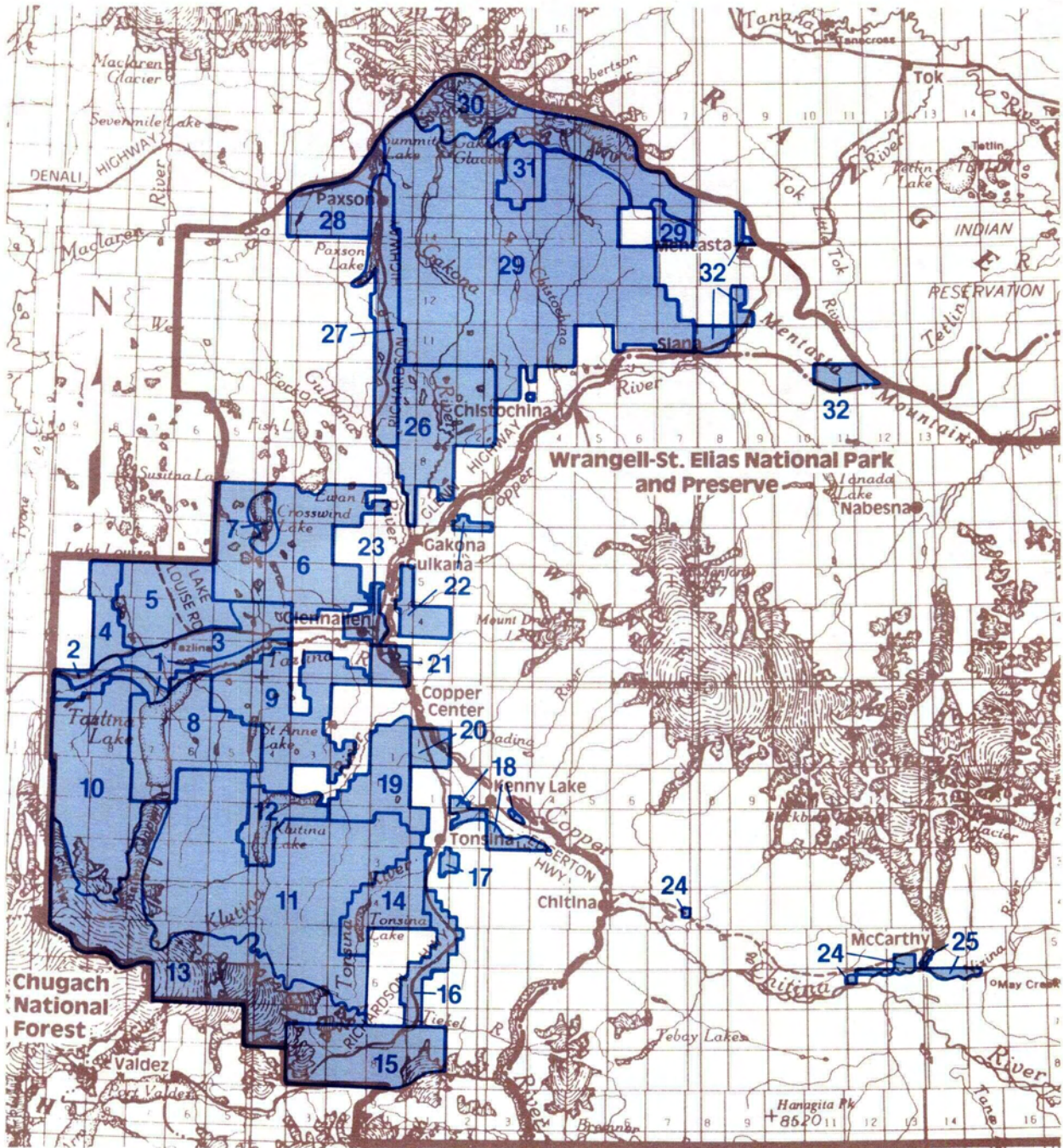


MANAGEMENT UNIT INDEX



- | | |
|--|--|
| 1. Nelchina River/Tazlina River - p.5 | 18. Lower Tonsina/Edgerton Highway - p.121 |
| 2. North of Nelchina River - p.13 | 19. Squirrel Creek/Mount DuRelle - p.129 |
| 3. North of Tazlina River - p.19 | 20. Willow Creek - p.135 |
| 4. North of Glenn Hwy. near Snowshoe Lake - p.27 | 21. Tazlina - p.141 |
| 5. Lake Louise Road Area - p.33 | 22. Mount Drum Bluffs - p.147 |
| 6. Crosswind Lake Area - p.45 | 23. Glennallen/ Gulkana - p. 153 |
| 7. Crosswind Lake - p.51 | 24. Long Lake/Fireweed Mt. - p.159 |
| 8. Tazlina, Kaina, & St.Anne Lakes Area - p.57 | 25. McCarthy/Nizina River - p.167 |
| 9. Between Tazlina & Klutina Rivers - p.63 | 26. Lower Gakona River - p.173 |
| 10. West of Tazlina Lake - p.69 | 27. Gulkana River/Richardson Hwy. - p.179 |
| 11. Chugach Mountains - p.75 | 28. Summit Lake - p.187 |
| 12. Klutina Lake & River - p.83 | 29. Upper Gakona, Chistochina, & Slana River Drainages - p.193 |
| 13. Chugach Glaciers - p.89 | 30. Alaska Range - p. 201 |
| 14. Tonsina Lake - p.95 | 31. Slate Creek/Chisna River - p.207 |
| 15. Thompson Pass - p.103 | 32. Slana/Mentasta - p.213 |
| 16. Tlekel/Richardson - p.109 | 33. Copper & Chitina Rivers, Other Navigable Tributaries - p.221
(not mapped) |
| 17. Tonsina Plateau - p.115 | |