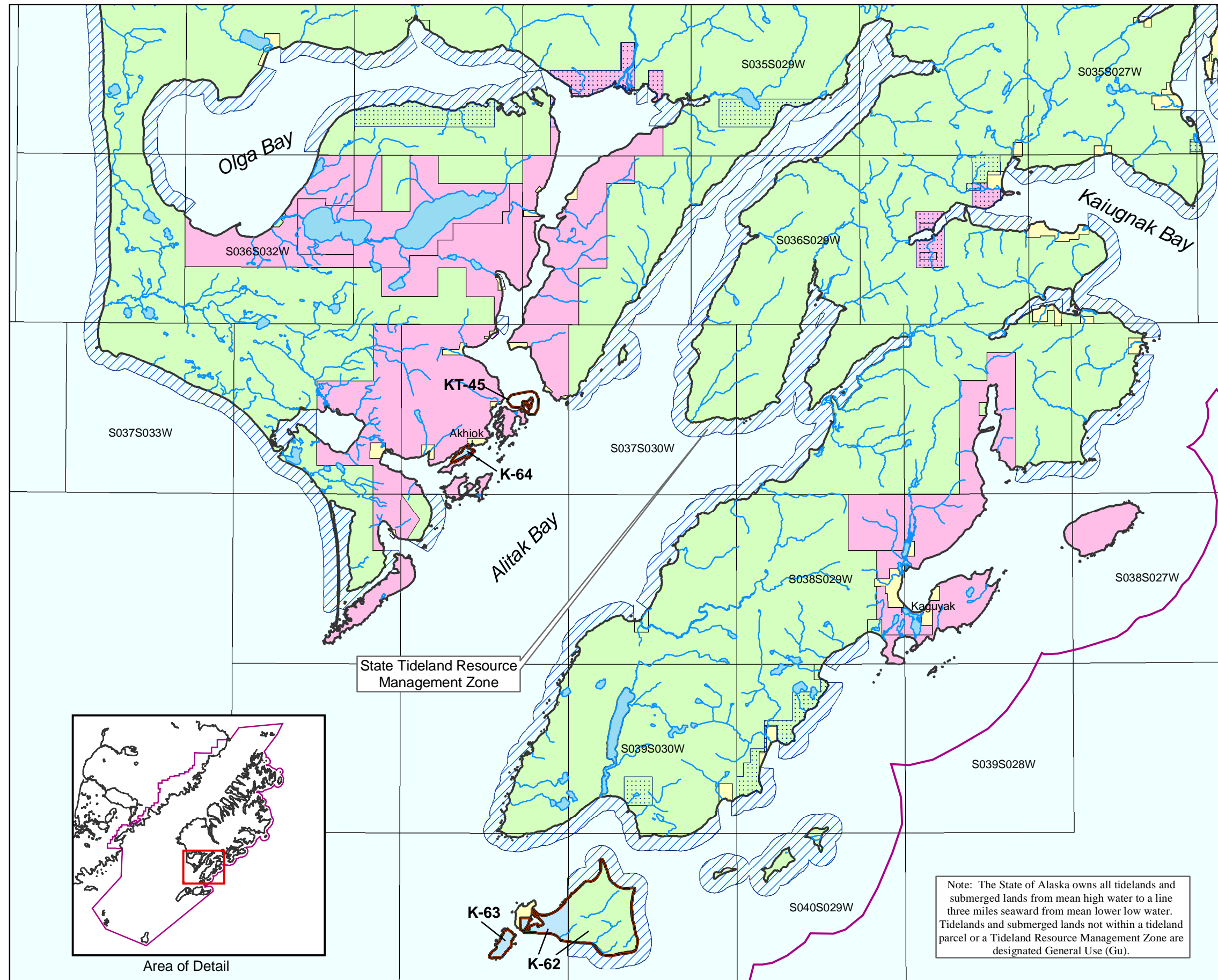


# MAP 3-11 Kodiak Region



**Parcels and Designations**

Upland Parcels:		Tideland Parcels:	
K-62	Gu	KT-45	Ha,Hv
K-63	Ha		
K-64	Pr		

**LEGEND**

- Plan Boundary
- Management Unit Boundary
- Tideland Resource Management Zone
- Land Ownership**
- Limited State Holding Land
- National Park & Preserve, or Wildlife Refuge
- Native Corporation Patented & Selected Land
- Private or Other Land

Note: The State of Alaska owns all tidelands and submerged lands from mean high water to a line three miles seaward from mean lower low water. Tidelands and submerged lands not within a tideland parcel or a Tideland Resource Management Zone are designated General Use (Gu).

