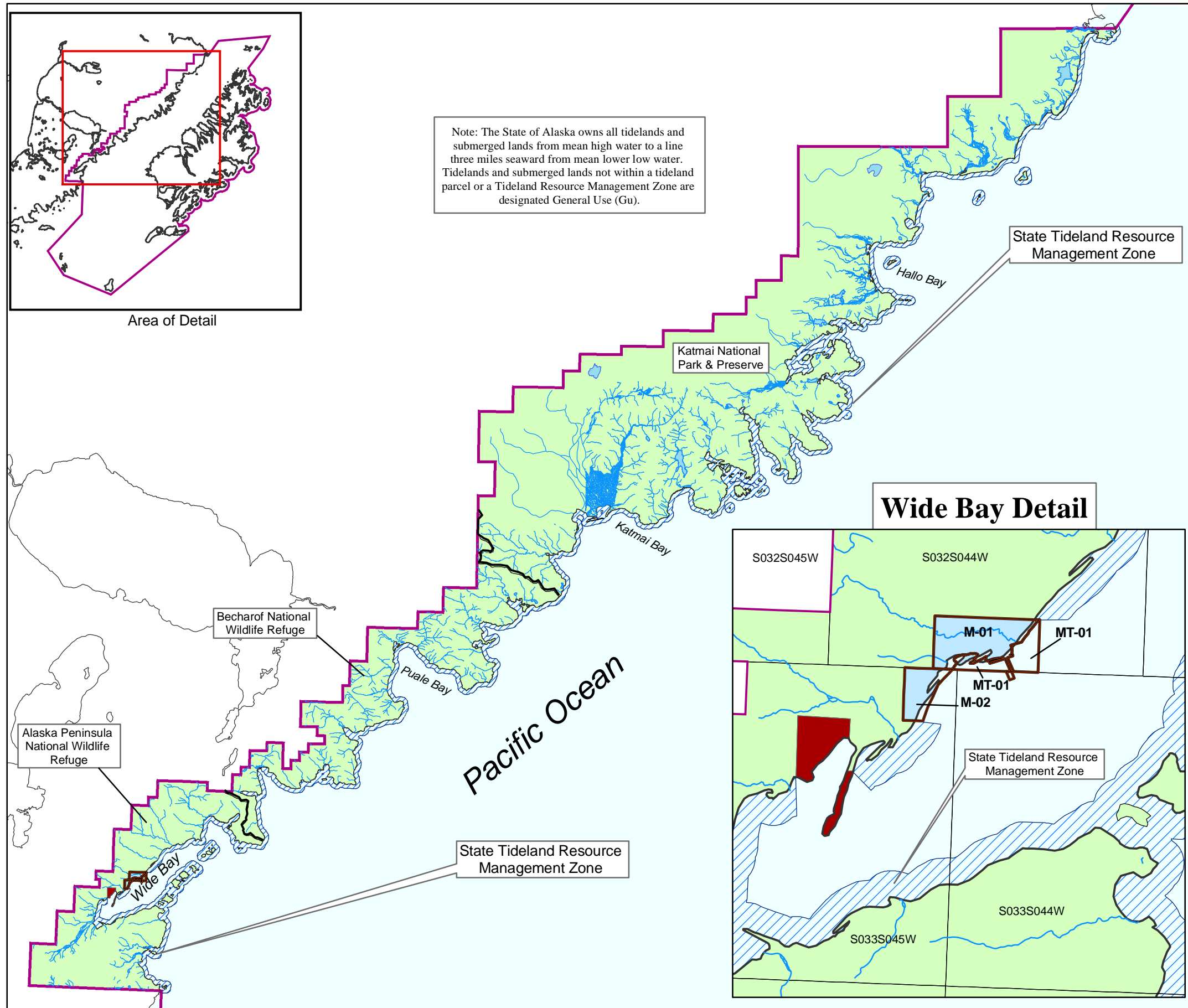


# MAP 3-13 Alaska Peninsula Area



Note: The State of Alaska owns all tidelands and submerged lands from mean high water to a line three miles seaward from mean lower low water. Tidelands and submerged lands not within a tideland parcel or a Tideland Resource Management Zone are designated General Use (Gu).

State Tideland Resource Management Zone

Katmai National Park & Preserve

Wide Bay Detail

Becharof National Wildlife Refuge

Alaska Peninsula National Wildlife Refuge

State Tideland Resource Management Zone

**Parcels and Designations**

Upland Parcels:		Tideland Parcels:	
M-01	Gu	MT-01	Gu
M-02	Gu		

**LEGEND**

- Plan & Upland Region Boundary (Pink outline)
- Management Unit Boundary (Brown outline)
- Tideland Resource Management Zone (Blue hatched)

**Land Ownership**

- State Land (Light Blue)
- National Park & Preserve, or Wildlife Refuge (Light Green)
- University Land (Red)

Area of Detail