

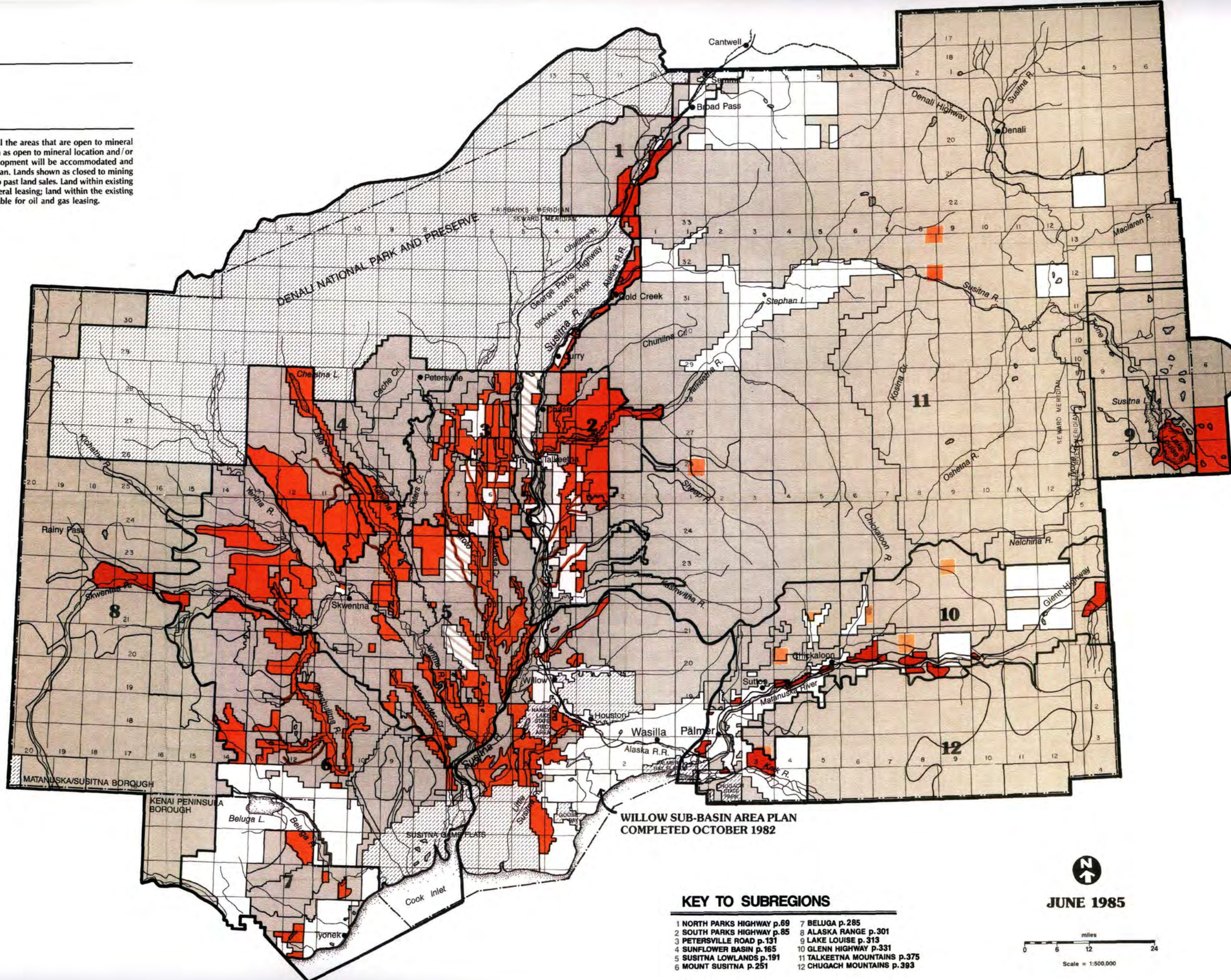
Susitna Area Plan

SUBSURFACE DESIGNATIONS

This map shows the availability of land for mining. The map shows all the areas that are open to mineral location and available for coal leasing or prospecting. All lands shown as open to mineral location and/or available for coal leasing are multiple use areas where mineral development will be accommodated and encouraged consistent with applicable state law and policies of this plan. Lands shown as closed to mining include areas closed prior to the preparation of this plan, mostly due to past land sales. Land within existing state parks shown on this map is closed to mineral location and mineral leasing; land within the existing state game refuges is open to leasehold location. All lands are available for oil and gas leasing.

LEGEND

-  Open to Mineral Location; Available for Coal Leasing and Prospecting
 -  Open to Mineral Location; Not Available for Coal Leasing or Prospecting
Large contiguous blocks of soils with agricultural potential
 -  Closed to Mineral Entry; Not Available for Coal Leasing or Prospecting
 -  Areas Open to Mineral Location Under a Lease; Available for Coal Leasing and Prospecting
 -  Select Tributaries to Larger Rivers that are Closed to Mineral Entry
 -  Areas Designated by the Legislature for Special Uses
 -  Private, Native and University Lands
The plan does not regulate uses on these lands.
- All lands are available for oil and gas leasing.



WILLOW SUB-BASIN AREA PLAN
COMPLETED OCTOBER 1982

KEY TO SUBREGIONS

- | | |
|----------------------------|-------------------------------|
| 1 NORTH PARKS HIGHWAY p.69 | 7 BELUGA p.285 |
| 2 SOUTH PARKS HIGHWAY p.85 | 8 ALASKA RANGE p.301 |
| 3 PETERSVILLE ROAD p.131 | 9 LAKE LOUISE p.313 |
| 4 SUNFLOWER BASIN p.165 | 10 GLENN HIGHWAY p.331 |
| 5 SUSITNA LOWLANDS p.191 | 11 TALKKEETNA MOUNTAINS p.375 |
| 6 MOUNT SUSITNA p.251 | 12 CHUGACH MOUNTAINS p.393 |



JUNE 1985

