

# Map 2: Revised Management Unit 16: Maurelle/Outside Islands (M)

The seaward planning boundary represents the approximate location of the state owned tide and submerged lands. All state tide and submerged lands within the boundary and not within a specific tideland unit are designated as General Use.

## Boundary/Land Status

- Management Unit Boundary
- State Owned Upland
- State Selected Upland
- State Tideland Unit
- Tongass National Forest
- TNF Wilderness
- TNF LUD II
- Native Owned
- Native Selected
- Other Private
- City Boundary

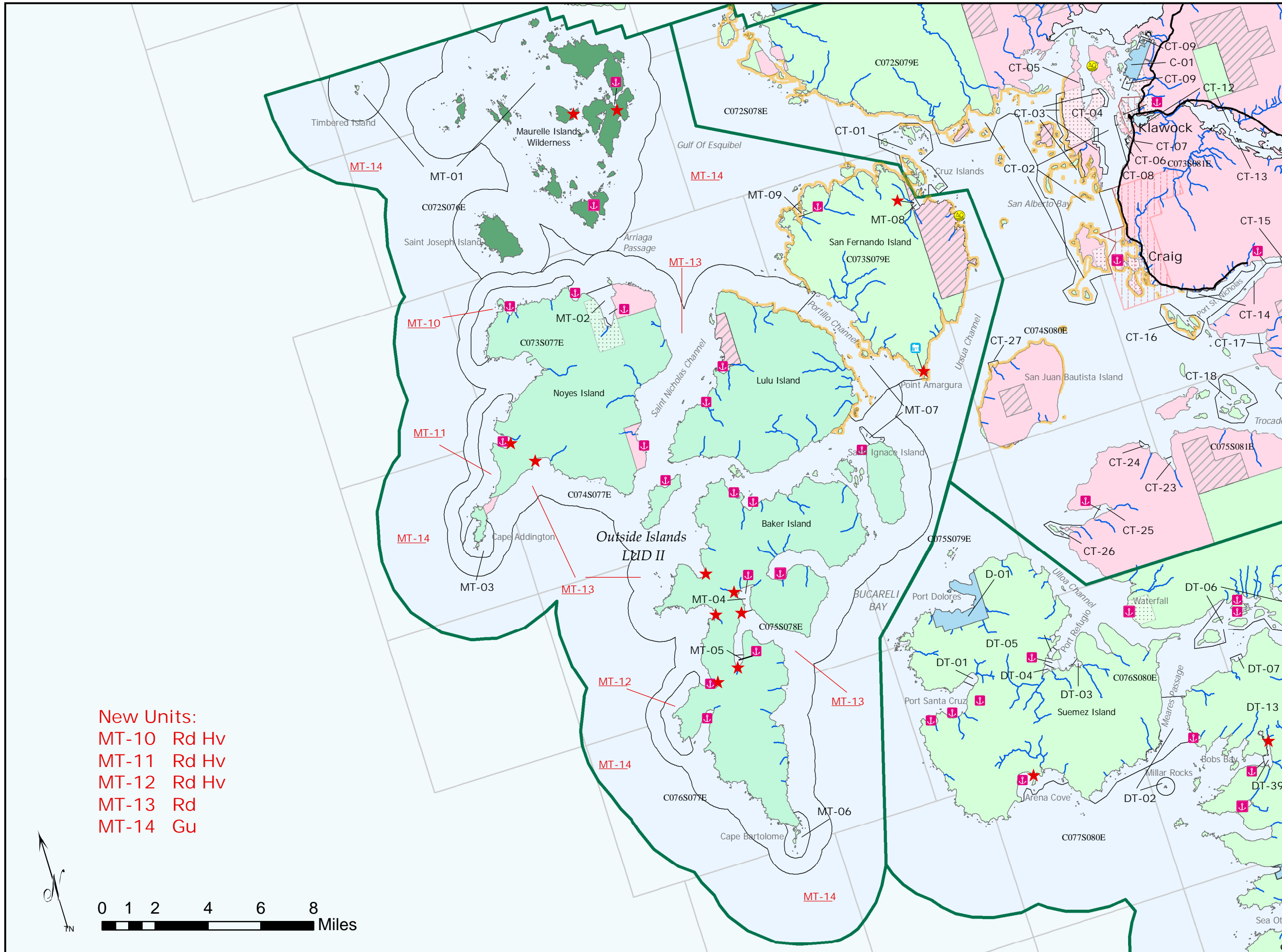
## Resources and Facilities

- Anchorage
- Designated Aquatic Farm Site
- Herring Spawning Area
- Recreational Trail
- USFS Cabin
- Marine Access Point
- Highway/Paved Road
- Anadromous Streams

## Units and Designations

Tideland Units:	
MT-01	Ha Hv
MT-02	Ha Hv
MT-03	Ha Hv
MT-04	Ha Hv
MT-05	Ha Hv
MT-06	Ha Hv
MT-07	Ha Hv
MT-08	Ha Hv
MT-09	Ha Hv
MT-10	Rd Hv
MT-11	Rd Hv
MT-12	Rd Hv
MT-13	Rd
MT-14	Gu

This map provides a graphical representation of resources, ownership and facilities. This map is not intended for navigational purposes and ownership status is only to section level accuracy. Source documents remain the official record.



New Units:  
 MT-10 Rd Hv  
 MT-11 Rd Hv  
 MT-12 Rd Hv  
 MT-13 Rd  
 MT-14 Gu

