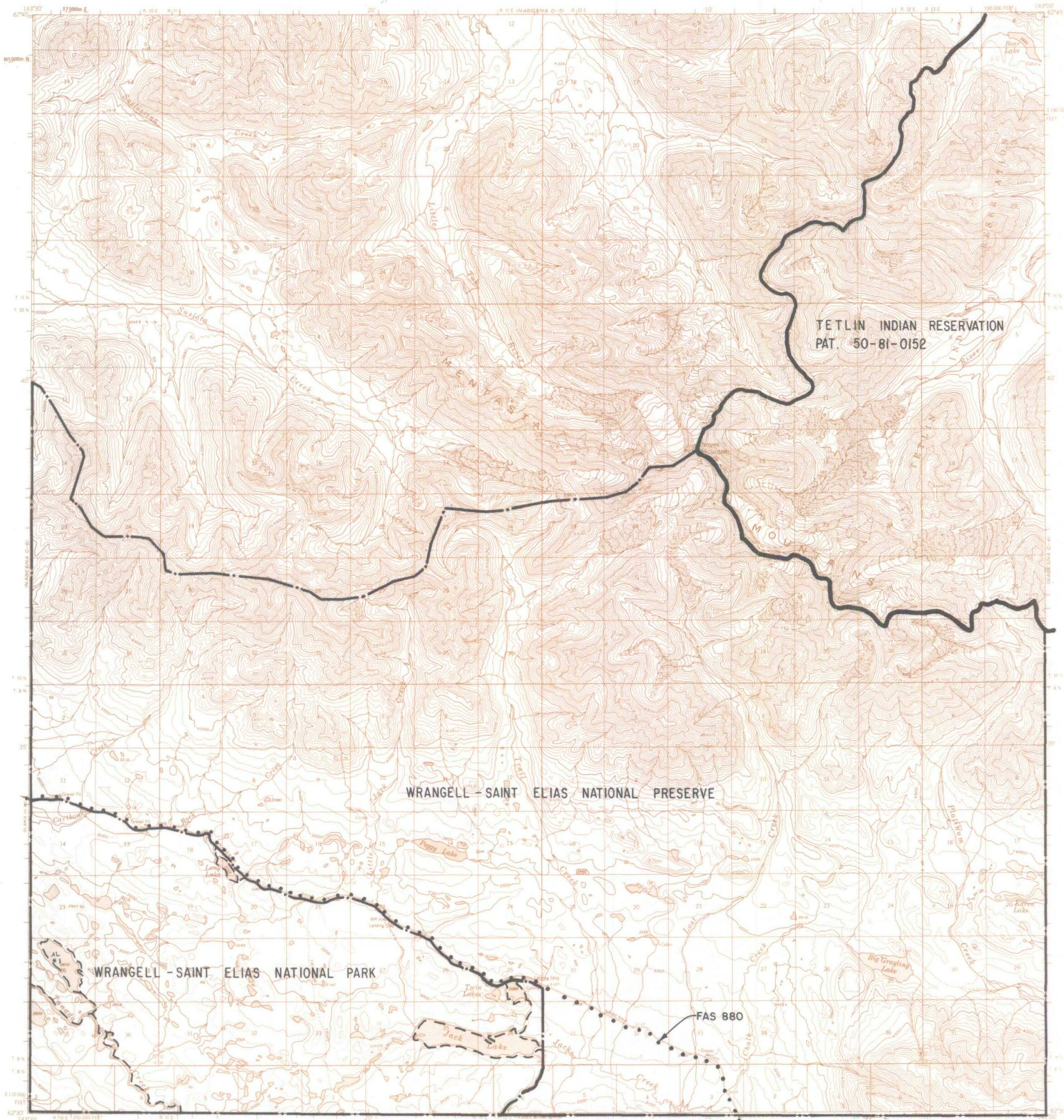


NABESNA C5



IC OR PATENT BDY.	FEDERALLY DETERMINED NAVIGABLE	OTHER AREA BDY.	 SCALE IN MILES June 1987	
WATER EXCLUSION BDY.	STATE DETERMINED NAVIGABLE	EASEMENTS & ACCESS ROUTES		

RESERVED EASEMENTS

FAS 880 Omnibus Road easement extending 100 feet on each side of the centerline of the Nabesna Road from FAP 46 to Nabesna.