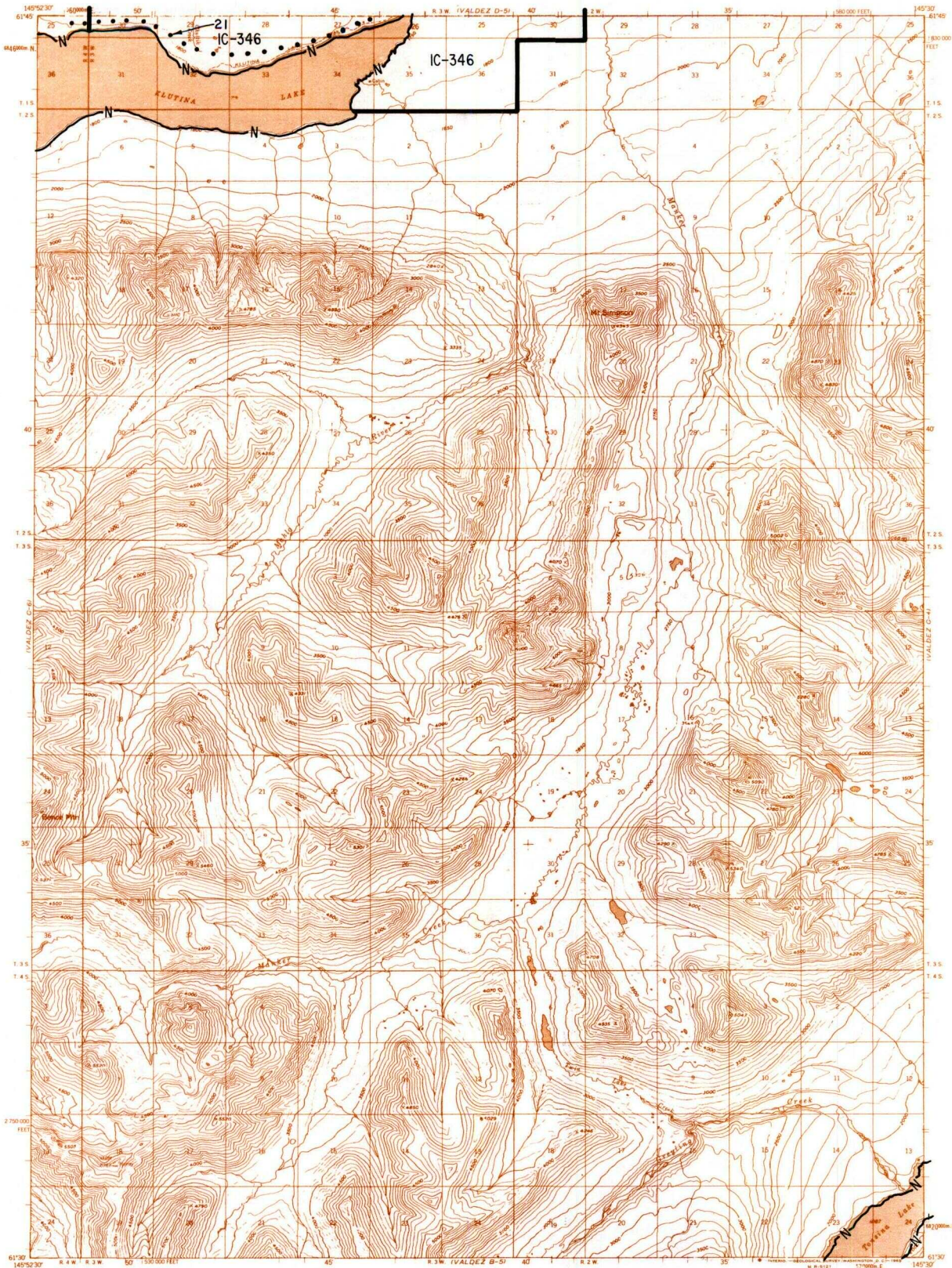


VALDEZ C5



- IC OR PATENT BDY.
- WATER EXCLUSION BDY.
- FEDERALLY DETERMINED NAVIGABLE
- STATE DETERMINED NAVIGABLE
- OTHER AREA BDY.
- EASEMENTS & ACCESS ROUTES

0 1 2
SCALE IN MILES
June 1987



RESERVED EASEMENTS

EIN 21 An easement for an existing access trail twenty-five (25) feet in width from site EIN 10a in Sec. 19, T.1S., R.2W., C.R.M., southwesterly to public lands.