

## AFOGNAK A-4

---

### ◆ RESERVED EASEMENTS:

#### EIN 1

A proposed trail running northwesterly from existing trail EIN 4. (25-foot trail)

#### EIN 4

An existing trail from Muskomee Bay at site EIN 24 northeasterly to Afognak Lake at site EIN 5. (25-foot trail)

#### EIN 24

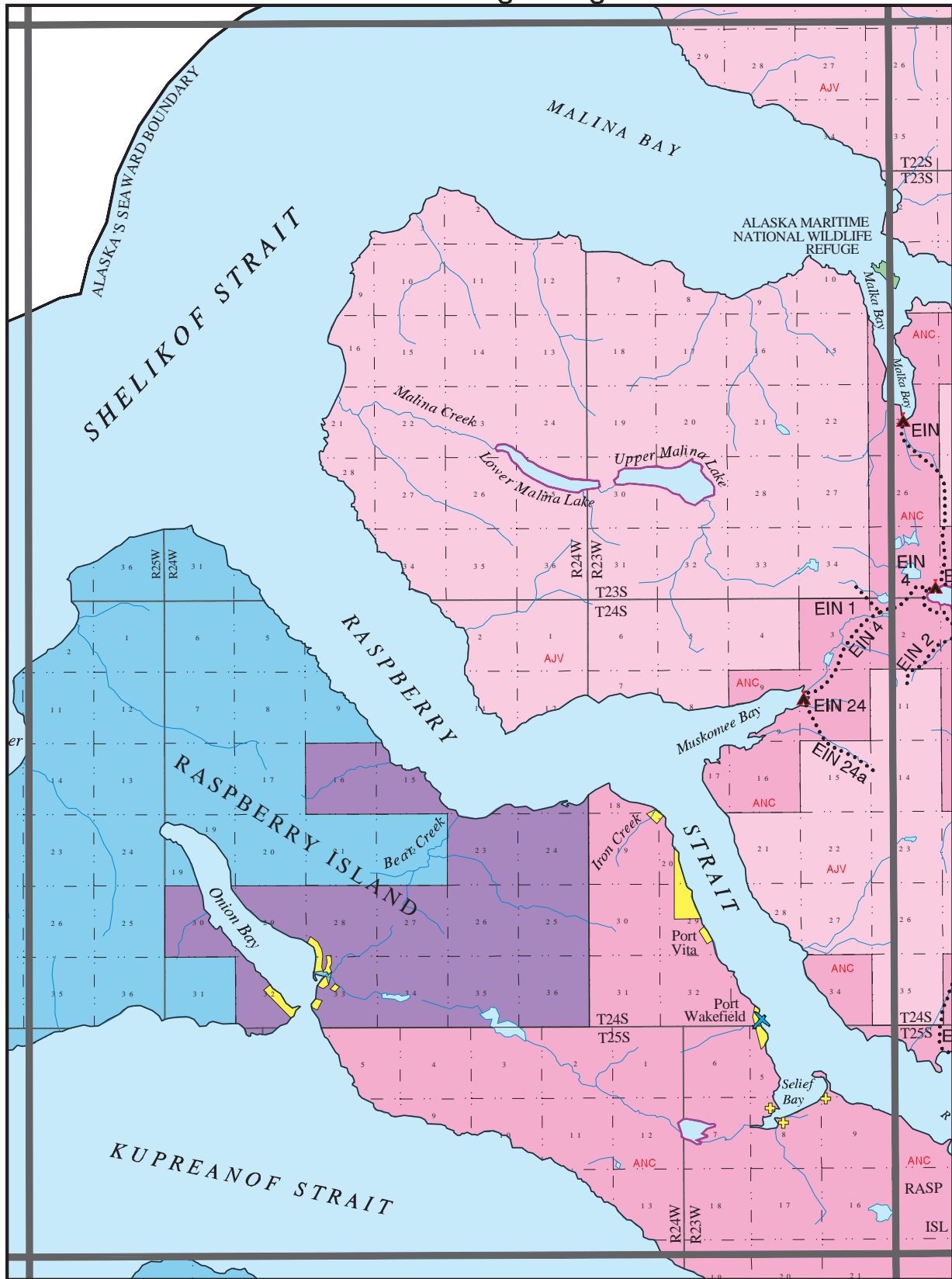
A campsite on the shore of Muskomee Bay at the head of the bay. (one-acre site)

#### EIN 24a

A trail running southeasterly from Muskomee Bay at site EIN 24. (25-foot trail)

See additional information in general information for **Easements**, and specifically **ANILCA 1427(b)(5) easements**, within that section for allowable uses and restrictions for land on Afognak Island identified as Native owned with Public Access.

# USGS Quadrangle Afognak A-4



## - KODIAK PUBLIC ACCESS ATLAS LEGEND -

- |                                 |   |                |                |                                    |
|---------------------------------|---|----------------|----------------|------------------------------------|
| State                           | Mental Health                           | Highway        | Campsite       | Wheel Strip                        |
| Native                          | University                              | Roads          | Public Cabin   | Beach Strip                        |
| Native owned with Public Access | Private                                 | Trails         | Boat Launch    | Floatplane                         |
| USF&WS                          | Private Tideland                        | Winter Trails  | Dock           | State Determined Navigable Water   |
| Katmai Natl Park                | Municipal Tideland                      | Atlas Boundary | Visitor Center | Federal Determined Navigable Water |
| Other Federal                   | Alaska State Park                       | USGS Quad      | Picnic Site    |                                    |
| Military                        | Critical Habitat Area                   |                |                |                                    |
| Municipal                       | Small Parcel- color indicates ownership |                |                |                                    |

March, 1997