

## KODIAK A-4

---

### ◆ RESERVED EASEMENTS:

#### **EIN 13**

A campsite at the outlet of an unnamed stream flowing into Midway Bay. (one-acre site)

#### **EIN 27**

A proposed trail from Midway Bay at site EIN 13 northwesterly along the left bank of an unnamed stream. (25-foot trail)

#### **EIN 30a**

A campsite on the shore of McCord Bay. (one-acre site)

#### **EIN 30b**

A campsite on the shore of Sitkalida Lagoon. (one-acre site)

#### **EIN 30c**

An existing trail from the shore of McCord Bay at site EIN 30a southwesterly to the shore of Sitkalida Lagoon at site EIN 30b and continuing southwesterly to Natalia Bay. (50-foot trail)

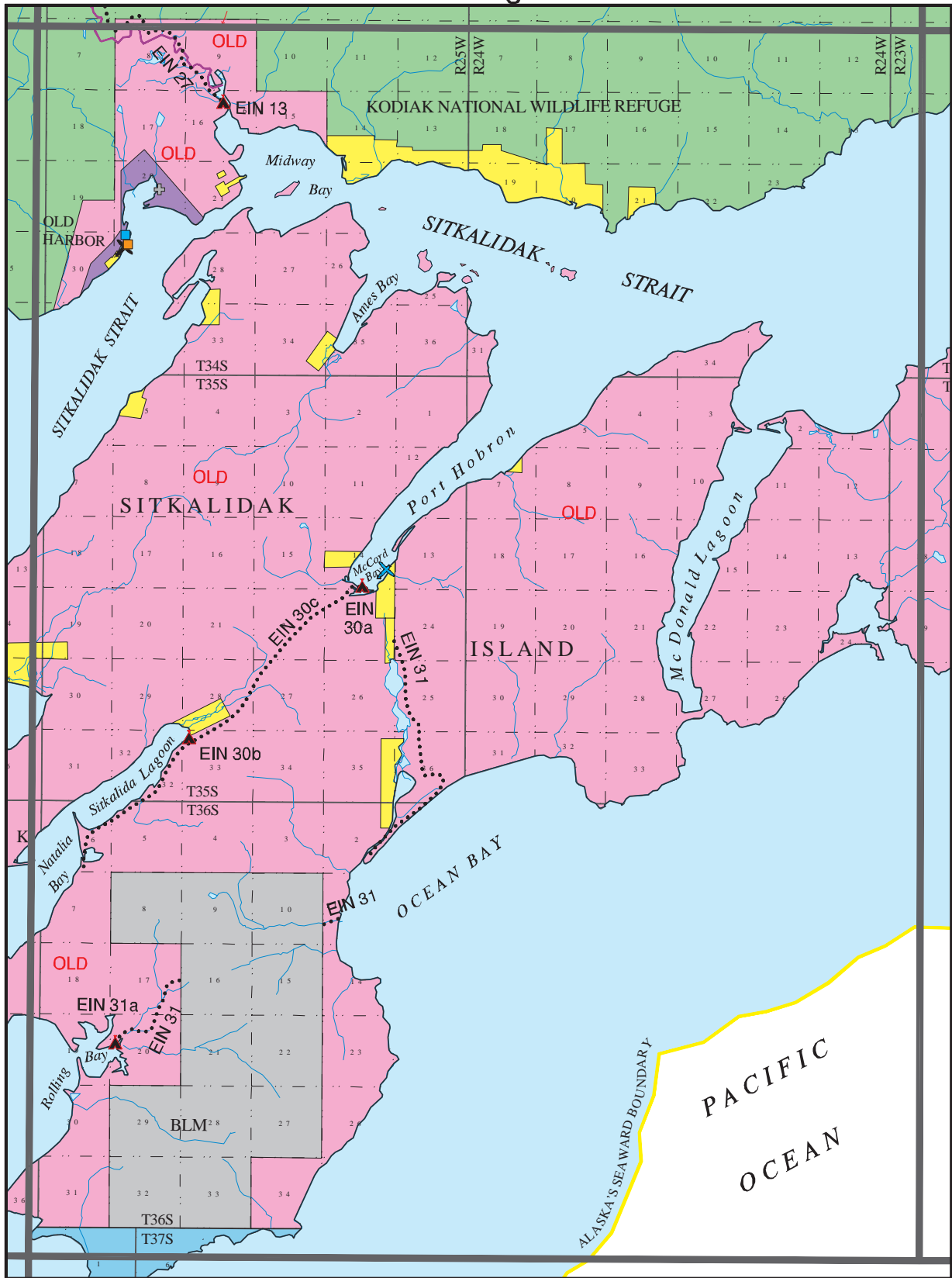
#### **EIN 31**

An existing trail running southerly from the shore of McCord Bay to the shore of Ocean Bay and from Ocean Bay to Rolling Bay. (50-foot trail)

#### **EIN 31a**

A campsite at the head of Rolling Bay. (one-acre site)

# USGS Quadrangle Kodiak A-4



## - KODIAK PUBLIC ACCESS ATLAS LEGEND -

- |                                      |   |                |                |                                    |
|--------------------------------------|---|----------------|----------------|------------------------------------|
| State                                | Mental Health                           | Highway        | Campsite       | Wheel Strip                        |
| Native                               | University                              | Roads          | Public Cabin   | Beach Strip                        |
| Native, public access by permit only | Private                                 | Trails         | Boat Launch    | Floatplane                         |
| USF&WS                               | Private Tideland                        | Winter Trails  | Dock           | State Determined Navigable Water   |
| Katmai Natl Park                     | Municipal Tideland                      | Atlas Boundary | Visitor Center | Federal Determined Navigable Water |
| Other Federal                        | Alaska State Park                       | USGS Quad      | Picnic Site    |                                    |
| Military                             | Critical Habitat Area                   |                |                |                                    |
| Municipal                            | Small Parcel- color indicates ownership |                |                |                                    |

March, 1997