

KODIAK C-3

◆ RESERVED EASEMENTS:

Saltery Cove Road

Legal access provided by FAS 3912. One-hundred foot wide-right-of-way. (Omnibus Road)

EIN 8-1

An existing trail west and south of Kizhuyak Bay. (25-foot trail)

EIN 8-2

A proposed trail from Anton Larsen Road at Red Cloud Creek southerly to Cope Mountain and then continuing westerly. (25-foot trail)

EIN 14a

A proposed trail from the head of Sharatin Bay southerly along the left bank of Elbow Creek. (25-foot trail)

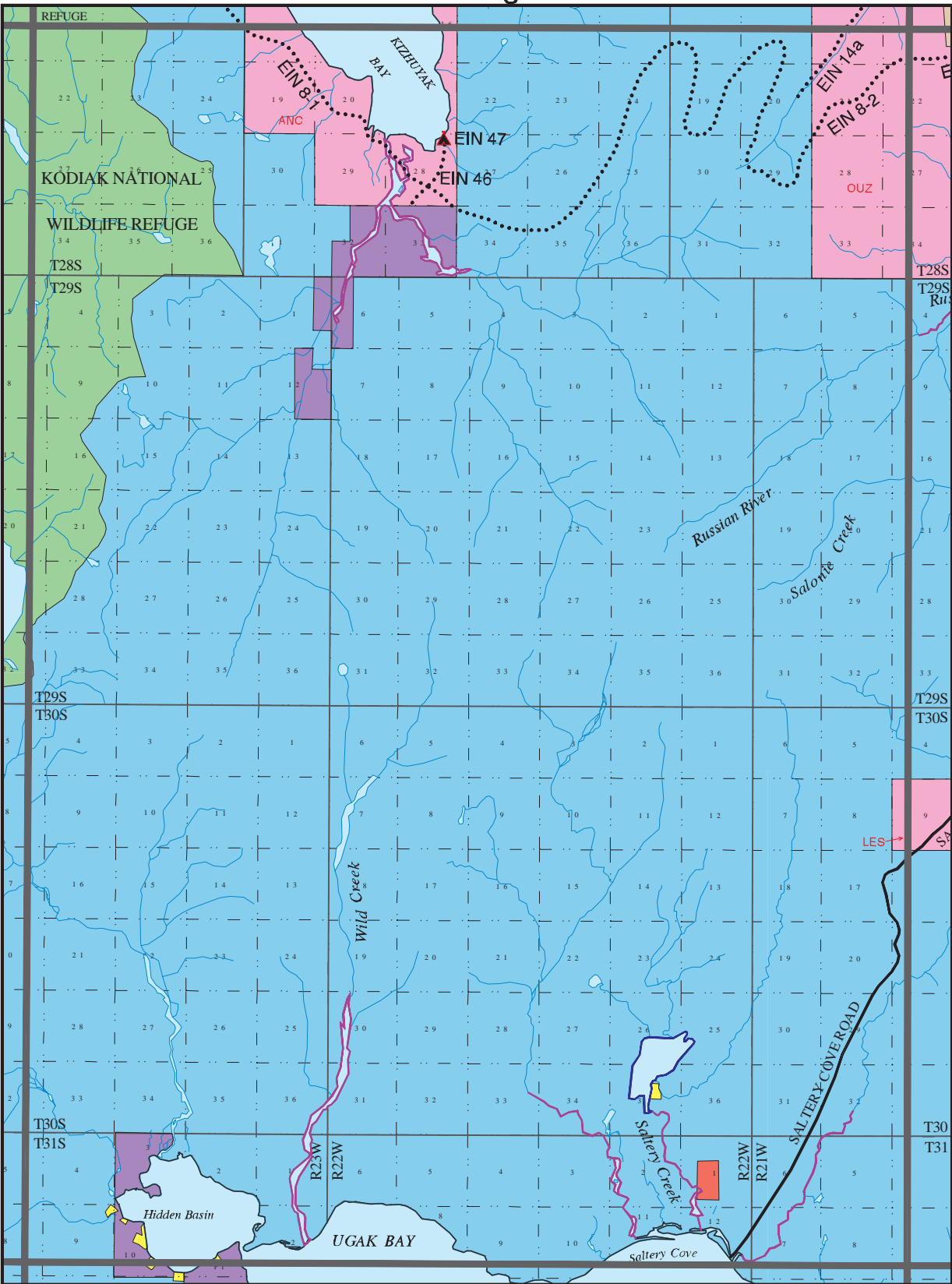
EIN 46

A campsite at the head of Kizhuyak Bay on the east shore of the bay near the mouth of an unnamed stream. (one-acre site)

EIN 47

A proposed trail running southerly from Kizhuyak Bay at site EIN 46. (25-foot trail)

USGS Quadrangle Kodiak C-3



- KODIAK PUBLIC ACCESS ATLAS LEGEND -

| | | | | |
|--------------------------------------|---|----------------|----------------|------------------------------------|
| State | Mental Health | Highway | Campsite | Wheel Strip |
| Native | University | Roads | Public Cabin | Beach Strip |
| Native, public access by permit only | Private | Trails | Boat Launch | Floatplane |
| USF&WS | Private Tideland | Winter Trails | Dock | State Determined Navigable Water |
| Katmai Natl Park | Municipal Tideland | Atlas Boundary | Visitor Center | Federal Determined Navigable Water |
| Other Federal | Alaska State Park | USGS Quad | Picnic Site | |
| Military | Critical Habitat Area | | | |
| Municipal | Small Parcel- color indicates ownership | | | |

March, 1997