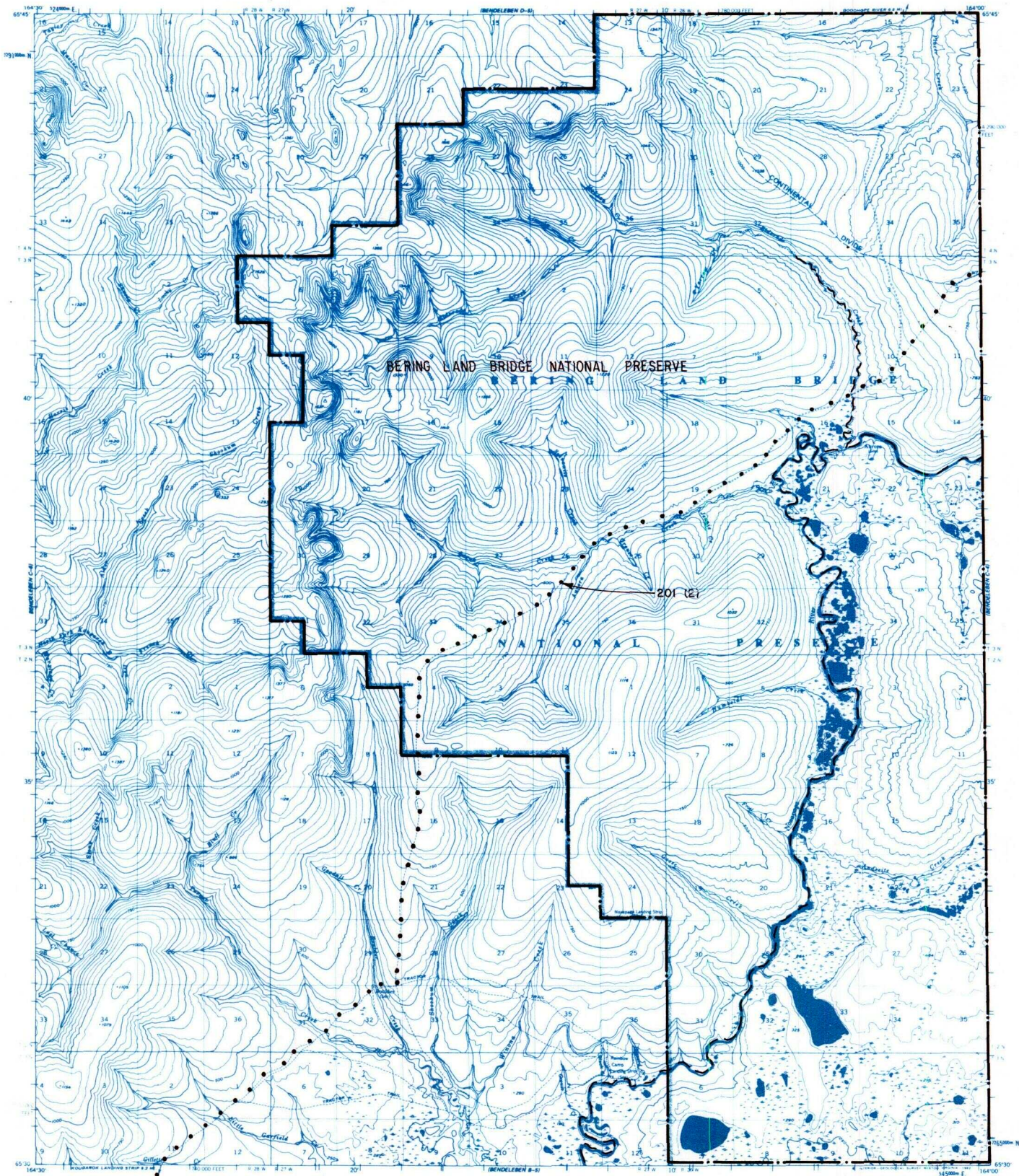


BENDELEBEN C-5



| | | | |
|----------------------|----------------------------|-----------------------------|----------------|
| IC OR PATENT BDY. | FED. DETERMINED NAVIGABLE | NATIONAL PRESERVE LAND BDY. | Scale in Miles |
| WATER EXCLUSION BDY. | STATE DETERMINED NAVIGABLE | EASEMENTS & ACCESS ROUTES | May 1989 |

RESERVED EASEMENTS

201(2)

Statutory right-of-way extending 100 feet on each side of the centerline of a trail from Deering southwest to the Taylor Highway for customary patterns and modes of travel during periods of adequate snow cover. Reserved pursuant to Section 201(2) of ANILCA (Public Law 96-487).