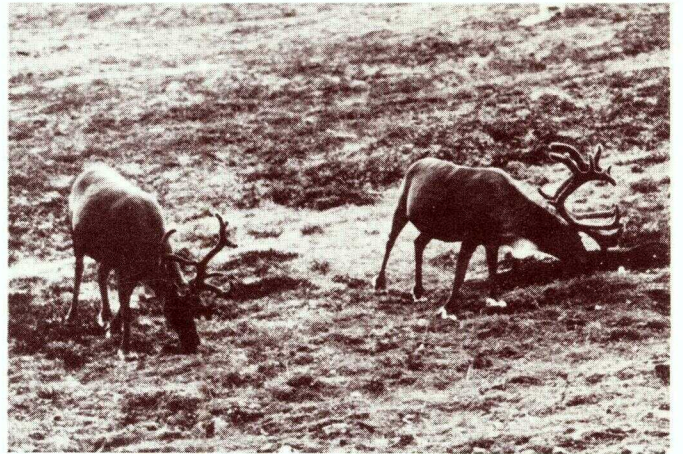
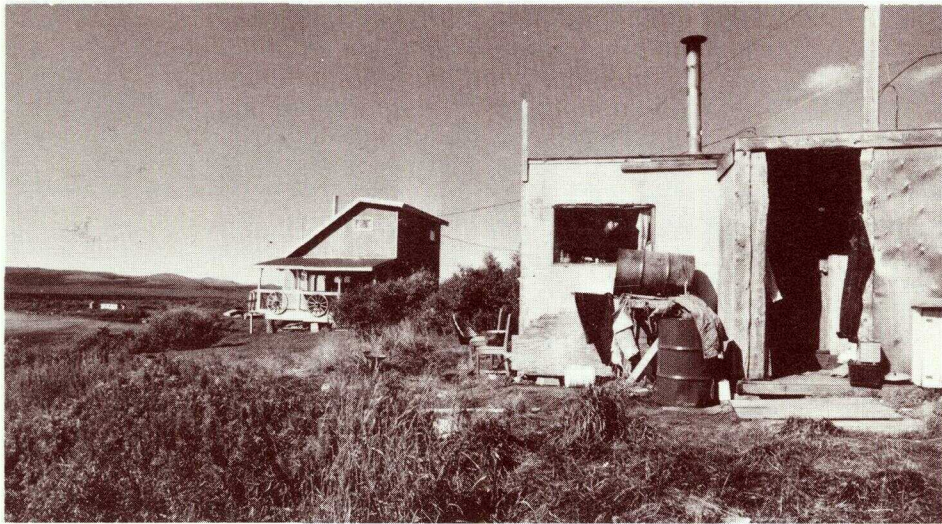
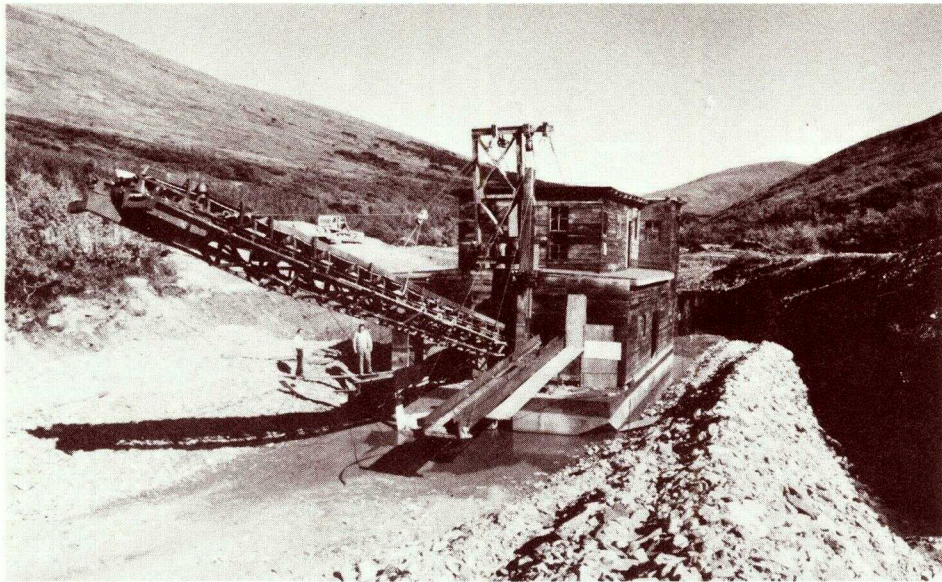


NORTHWEST EASEMENT ATLAS

NOME AREA



JUNE 1989



NORTHWEST EASEMENT ATLAS

NOME AREA

State of Alaska

Department of Natural Resources

Division of Land & Water Management

Anchorage, Alaska

June 1989

INTRODUCTION

Over the last two decades Alaska has experienced tremendous changes in land ownership and management. Many areas previously available for public use may today be restricted due to inclusion in a federal conservation unit, state legislatively designated unit, and often areas may no longer be available for public use because of conveyance to a Native corporation or other private parties.

This atlas has been designed to aid both the public user and the land owner or manager in dealing with a growing problem in Alaska, unauthorized use of land and resources. This use, for the most part, has been inadvertent because of a lack of easily understood and readily available current land status information. This atlas has been designed to provide this information by graphically portraying current land ownership as of date of publication and public access site locations, including identifications of any restrictions.

This atlas is not a legal document. It is a representation of official state and federal land records. Generally, information is shown to a section (one square mile) level. For accurate information refer to the official records in the public information offices of the state's Department of Natural Resources (DNR) and the federal Bureau of Land Management (BLM).

Private land is not open to public use or travel without prior permission from the landowner. Use or travel across private land or the unauthorized use of public easements may result in criminal trespass. If you have any questions concerning public use of an area, you are encouraged to contact the appropriate land owner or manager. A list of the names, addresses and phone numbers of corporate land owners is included within the atlas. Privately owned land may be located on detailed land status maps that are available at BLM and State DNR public offices. It is *your* responsibility to know what land and use restrictions apply and to obtain permission and any necessary permits in advance from the land owner.

Invasion of community and camp privacy is a concern of many rural residents. Therefore, please be sensitive to local concerns and customs. Do not take pictures of residents without permission or otherwise encroach on local use areas.

Trapping cabins, fishing and hunting camps and tent camps are essential to the livelihood of many rural residents. They should not be used by the public except in case of real emergency. Although they may appear abandoned, the owners will return and will need everything they left for the coming season. Early trappers and travelers established an honorable tradition of respecting cabins and campsites, a tradition that should be continued today.

HOW TO USE THIS ATLAS

The maps in this atlas show where land has been conveyed to Native corporations and where land is within federal conservation units. Land conveyances of less than 160 acres are not mapped. The maps do not identify other federal public domain land managed by the Bureau of Land Management (BLM), state land, or other private land. If the land status is not labeled on a map it is in one of these other land categories. If it is not private land it is generally public land available for general public use without a permit. Further information can be obtained by contacting an office of either BLM or the state Department of Natural Resources (DNR).

This atlas also does not show parcels of private property, such as Native allotments, homesteads, trade and manufacturing sites, etc. You should be aware that they may exist in any area. Detailed land status maps which identify all private land are available at BLM and DNR land record offices.

Waterbodies marked as federally determined navigable on the maps are available for public use up to the line of ordinary high water (usually the vegetation line). Tideland areas are also available for public use up to the line of mean high tide. State law also provides that you can use any waterbody in the state for free passage without obstruction. This does not, however, give you the authority to use the adjoining private land without permission. State determined navigable waters are so identified and is for informational purposes only.

Public access routes and easements are shown on each map along with a written description of their locations, season of use and use restrictions, if any. Although many of these easements are not marked on the ground, it is your responsibility to confine your passage and activities only to those areas and to specified allowable uses. Only 17(b) easements, 201(2) easements, Omnibus Roads, Federal Aid Highways, National Park Service Trails and Ranger Stations, and other rights-of-way are shown. R.S. 2477 rights-of-way will not be shown until determined valid by the courts or officially asserted by the state.

EXPLANATION OF TERMS

"Easement" is an interest in land which has been reserved for the public to use even though the land may be owned by a private individual or Native corporation. An easement are reserved for a variety of specified purposes, such as a road, trail, campsite, airport, etc. Easements are restricted in terms of width, types of use, seasons of use, and duration of use. Easements cannot be used for any other uses than those for which they were reserved. For example, a site easement, reserved under the authority of the Alaska Native Claims Settlement Act (ANCSA), may only be used for temporary 24 hour camping. You may not fish, hunt or otherwise recreate on the site, and you may not disturb the site in any way, such as cutting trees or firewood.

"Navigable Waters" are those waterbodies that have been found or are capable of transporting people or goods and, as such, the land beneath them is owned by the state. These waterbodies extend up to the line of ordinary high water (usually the vegetation line). The adjacent uplands may be in private ownership and not available for use without permission.

"Federally Determined Navigable" are those waterbodies that BLM has administratively determined to be navigable for land title purposes. Their definition has changed over time as the result of various court cases. However, today BLM considers water bodies navigable if they were, at the time of statehood, navigable for crafts larger than a one-person kayak.

"State Determined Navigable" are those additional waterbodies that the state has determined navigable. This usually occurs where BLM has not yet made a determination or, because of an earlier determination, the state disagreed with the criteria they used. The state today uses the same definition as BLM for rivers and streams.

"Public Waters" are those waterbodies that are not navigable. Public waters may be used, without obstruction of interference, but the land beneath them and adjacent to them may be in private ownership, and not available for use without permission.

"Ordinary High Water Mark" is defined as the mark along the bank or shore where the presence and action of water are so common and usual, and so long continues in all ordinary years, as to leave a natural line impressed on the bank or shore. That line may be indicated by erosion, shelving, changes in soil characteristics, destruction of terrestrial vegetation, or other distinctive physical characteristics.

An **"IC"** is an Interim Conveyance document issued to a Native corporation under ANCSA which passes title to land from the federal government to a corporation.

"T" means "Township" which is a tract of land contained by running the meridians and parallels six miles apart, whose sides run north and south and east and west, and is approximately square and contains thirty-six square miles or 23,040 acres. The townships situated east and west of each other are designated as townships, in describing lands, and are numbered from the base line north or south on the principal meridian.

"R" means "Range" which is a row or tier of townships lying east or west of and parallel with a principal meridian and north or south of a base line.

"SE" means surface estate only was conveyed.

"SSE" means subsurface estate only was conveyed.

PATENT	IC	CORPORATION	USGS QUADS
274		Brevig Mission Native Corporation	Teller A2 A3 A4 B2 B3 B4 C4
288		White Mountain Native Corporation	Solomon C3 C4 D3 D4
370		Golovin Native Corporation	Solomon B2 B3 C2 C3
417		Diomedede Native Corporation	Teller B4 B5 B6 C5
420		Unalakleet Native Corporation	Unalakleet D4
422		Council Native Corporation	Solomon D3 D4
466		King Island Native Corporation	Teller A4
466		King Island Natice Corporation	Nome C2 C3 D3 D4
475		Teller Native Corporation	Teller A2 A3 B3
491		Wales Native Corporation	Teller B6 C5 C6 C7 D5 D6
493		Unalakleet Native Corporation	Norton Bay A3 A4
493		Unalakleet Native Corporation	Unalakleet C4 D3 D4
495		St. Michael Native Corporation	St. Michael B1 C1
495		St. Michael Native Corporation	Unalakleet B5 B6
502		Shishmaref Native Corporation	Shishmaref A1 A2 A3 A4 B2 B3
504		White Mountain Native Corporation	Solomon D3
506		Council Native Corporation	Solomon D4
521		Sitnasuak Native Corporation	Nome C1
528		Sitnasuak Native Corporation	Solomon B6
528		Sitnasuak Native Corporation	Nome B1
549		Stebbins Native Corporation	St. Michael A1 B1 B2 C1 C2
558		Sitnasuak Native Corporation	Nome C2
558		Bering Straits Native Corporation	Solomon B6 C6
597		Koyuk Native Corporation	Norton Bay D4 D5
597		Koyuk Native Corporation	Candle A4 A5
598		Bering Straits Native Corporation	Norton Bay D4 D5
598		Bering Straits Native Corporation	Candle A4 A5
614		Kotlik Native Corporation	St. Michael A2 A3 A4
696		Solomon Native Corporation	Solomon B6 C6
707		Sitnasuak Native Corporation	Nome B1 C1 C2
719		Shaktoolik Native Corporation	Norton Bay A4 B4 B5 C4 C5
832		King Island Native Corporation	Nome C3 D3
867		Solomon Native Corporation	Solomon C5
914		St. Michael Native Corporation	St. Michael B1
945		Mary's Igloo Native Corporation	Teller A1 A2 B1
945		Mary's Igloo Native Corporation	Bendeleben A6
952		Stebbins Native Corporation	St. Michael B1
954		Teller Native Corporation	Teller B3
972		Sitnasuak Native Corporation	Nome B1
988		Wales Native Corporation	Nome C1

PATENT	IC	CORPORATION	USGS QUADS
	992	Sitnasuak Native Corporation	Nome B1
	*1065	Sitnuasauk Native Corporation	Nome C1
	1088	Unalakleet Native Corporation	Unalakleet C4 D3 D4
	1093	Mary's Igloo Native Corporation	Bendelben A6
	1093	Mary's Igloo Native Corporation	Teller A1
	1145	Unalakleet Native Corporation	Unalakleet D4
	1147	Unalakleet Native Corporation	Unalakleet D3
	1324	Golovin Native Corporation	Solomon B2
	1327	Golovin Native Corporation	Solomon C2
	*1331	Brevig Mission Native Corporation	Teller B3
	*1392	Council Native Corporation	Solomon D4
	*1398	Golovin Native Corporation	Solomon B2
50790148		Elim Native Corporation	Solomon B2 C1 C2 D1
50790148		Elim Native Corporation	Norton Bay C6 D6
50800023		Brevig Mission Native Corporation	Teller B3
50810139		Diomedea Native Corporation	Teller B5
50820031		King Island Native Corporation	Teller A1
50820038		Teller Native Corporation	Teller B3
50820051		Wales Native Corporation	Teller C6 C7
50820100		Sitnasuak Native Corporation	Nome B1
50820148		Sitnasuak Native Corporation	Nome B1 C1 C2
50820148		Sitnasuak Native Corporation	Solomon B6 C6
50830035		Bering Straits Native Corporation	Norton Bay D5
50830049		Kotlik Yupik Native Corporation	St. Michael A4
50830245		Solomon Native Corporation	Solomon C5
50830275		Sitnasuak Native Corporation	Shishamaref B3
50830275		Sitnasuak Native Corporation	Nome C1 C2
50830276		Bering Straits Native Corporation	Nome C1
50830288		NANA Regional Corporation, Inc.	Candle D5
50840721		Golovin Native Corporation	Solomon C3
5085010		Sitnasuak Native Corporation	Nome B1
50850311		Wales Native Corporation	Teller C6 C7
50850505		Sitnasuak Native Corporation	Nome C1
50860098		St. Michael Native Corporation	Unalakleet B6

* Land conveyances of less than 160 acres are not mapped

**CORPORATION/GOVERNMENT
ADDRESS****LAND MANAGER/
PHONE NUMBER**

Bering Straits Native Corporation P.O. Box 1088 Nome, AK 99762	Henry Ivanoff, President (907) 443-5252
Brevig Mission Native Corporation Brevig Mission, AK 99785	Elmer Olanna, President (907) 642-3951
Council Native Corporation P.O. Box 1707 Nome, AK 99762	Karen Dickson, President (907) 443-5231
Diomedede Native Corporation Diomedede, AK 99762	Orville Ahkinga, President (907) 686-8001
Golovin Native Corporation Golovin, AK 99762	Peggy Hardy, President (907) 779-3251
Elim Native Corporation Elim, AK 99739	John Jimewouk, President (907) 890-3071
King Island Native Corporation P.O. Box 992 Nome, AK 99762	Mike Saclamana, President (907) 443-5494
Koyuk Native Corporation Koyuk, AK 99753	Roy Otten, President (907) 963-3551
Mary's Igloo Native Corporation Teller, AK 99778	Phillip Kugzruk, President (907) 642-3366
St. Michael Native Corporation St. Michael, AK 99659	Suzie Horn, President (907) 923-4031
Shaktoolik Native Corporation Shaktoolik, AK 99771	Alex Sookiayak, President (907) 955-3051
Shishmaref Native Corporation Shishmaref, AK 99772	Walter Nayokpuk (907) 649-3751
Sitnasuak Native Corporation P.O. Box 905 Nome, AK 99762	Robbie Fagerstrom, President (907) 443-5296
Solomon Native Corporation P.O. Box 243 Nome, AK 99762	Rose Ann Timbers, President (907) 443-2844
Stebbins Native Corporation Stebbins, AK 99671	Theodore Katcheak, President (907) 934-3281

**CORPORATION/GOVERNMENT
ADDRESS**

**LAND MANAGER/
PHONE NUMBER**

Teller Native Corporation
P.O. Box 509
Teller, AK 99778

Norman Menadelook, President
(907) 642-4001

Unalakleet Native Corporation
P.O. Box 100
Unalakleet, AK 99684

Paul Johnson, President
(907) 624-3411

White Mountain Native Corporation
White Mountain, AK 99784

George Ashenfelter, President
(907) 638-3381

NANA Regional Corporation, Inc.
P.O. Box 49
Kotzebue, AK 99752

Walter Sampson
(907) 442-3301

Kotlik Yupik Corporation
Kotlik, AK 99620

Michael Hunt, Sr., Chairman
(907) 899-4141

Wales Native Corporation
Wales, AK 99783

Ernest Oxereok
(907) 664-3641

U.S. Bureau of Land Management
Alaska State Office
701 C Street, Box 13
Anchorage, AK 99513(907) 664-3641

BLM Public Room
(907) 271-5960

U.S. Bureau of Land Management
Kobuk District Office
1541 Gaffney Road
Fairbanks, AK 99703

Roger Bolstad
(907) 356-5386

U.S. Bureau of Land Management
Anchorage District Office
6881 Abbot Loop Road
Anchorage, AK 99516

Richard Vernimen
(907) 267-1248

National Park Service
Alaska Regional Office
2525 Gambell Street, Rm. 107
Anchorage, AK 99503-2892

Charles Gilbert
(907) 257-2584

National Park Service
Bering Land Bridge National Preserve
P.O. Box 220
Nome, AK 99762

Larry Rose
(907) 443-2522

State Department of Natural Resources
Division of Land & Water Management
Northern Regional Office
3700 Airport Way
Fairbanks, AK 99709

Jerry Brossia
(907) 451-2700

State of Alaska
Department of Transportation
and Public Facilities
Right-of-Way Engineering Section
600 University Avenue
Suite F
Fairbanks, AK 99709

John Bennett
(907) 474-2413