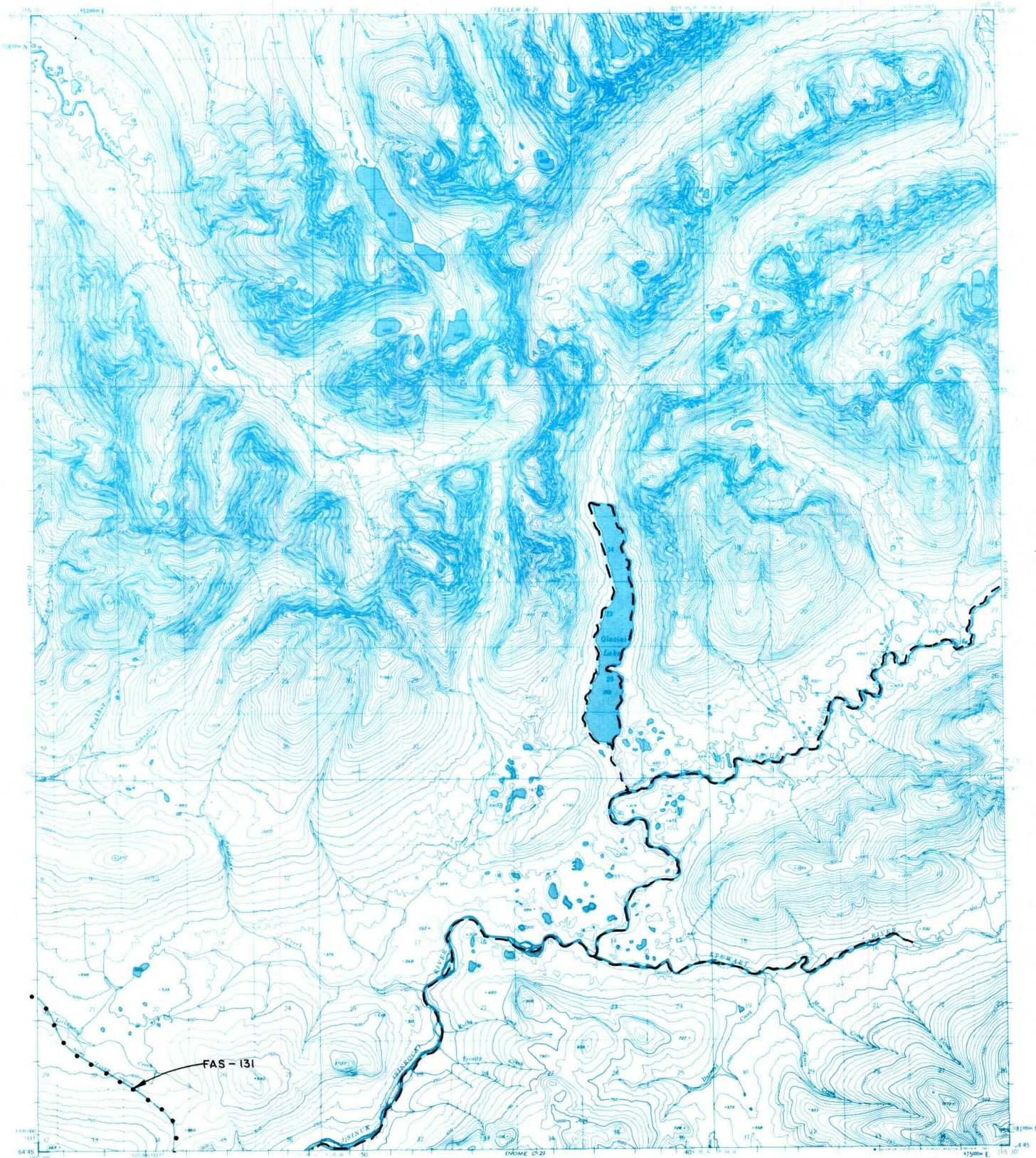
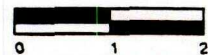


NOME D-2



- IC OR PATENT BDY.** **N** **FED. DETERMINED NAVIGABLE** **NATIONAL PRESERVE LAND BDY.**
- WATER EXCLUSION BDY.** **STATE DETERMINED NAVIGABLE** **EASEMENTS & ACCESS ROUTES**



Scale in Miles

May 1989

RESERVED EASEMENTS

FAS 131 Omnibus Road easement extending 100 feet on each side of the centerline of the Nome-Teller Road from FAS 141 near Nome northwest to Teller.