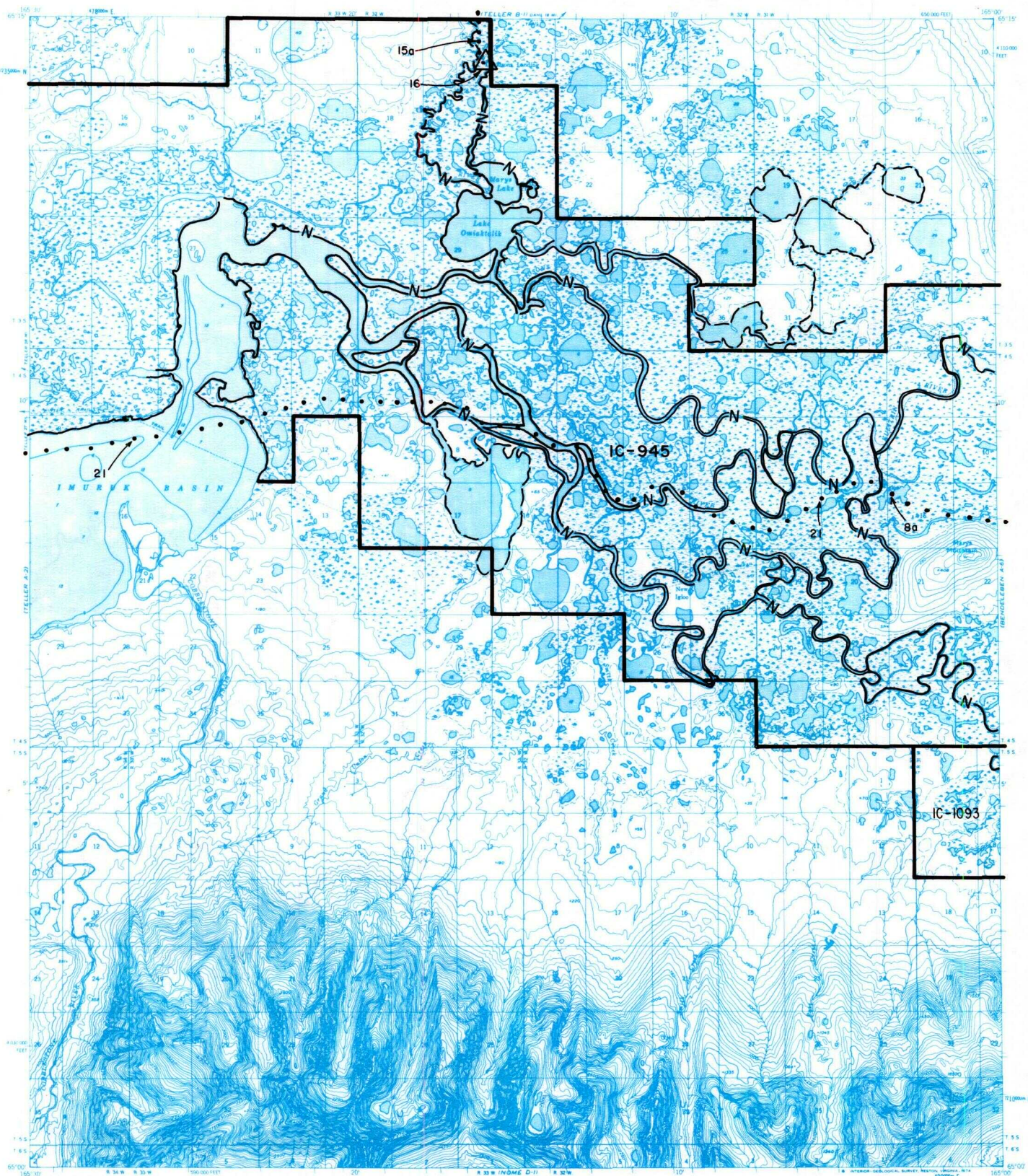


# TELLER A-1



- IC OR PATENT BDY.**      **N**      **FED. DETERMINED NAVIGABLE**      **NATIONAL PRESERVE LAND BDY.**
- WATER EXCLUSION BDY.**      **STATE DETERMINED NAVIGABLE**      **EASEMENTS & ACCESS ROUTES**



Scale in Miles  
May 1989

## RESERVED EASEMENTS

- EIN 8a**      An easement for an access trail twenty-five (25) feet in width from Mary's Igloo in Section 8, T. 4 S., R. 31 W., K.R.M., southeasterly to Pilgrim Hot Springs connecting with road F 80460. The season of use is limited to winter.
- EIN 15a**      An easement for an access trail fifty (50) feet in width from site EIN 16 at Davidsons Landing in Section 8, T. 3 S., R. 32 W., K.R.M., northerly to public land.
- EIN 16**      A one (1) acre site easement upland of the ordinary high water mark in Section 8, T. 3 S., R. 32 W., K.R.M., on the shore of a slough connecting Mary's Lake to Davidsons Landing.
- EIN 21**      An easement for an access trail twenty-five (25) feet in width from Mary's Igloo in Section 8, T. 4 S., R. 31 W., K.R.M., westerly to public land. The season of use is limited to winter.