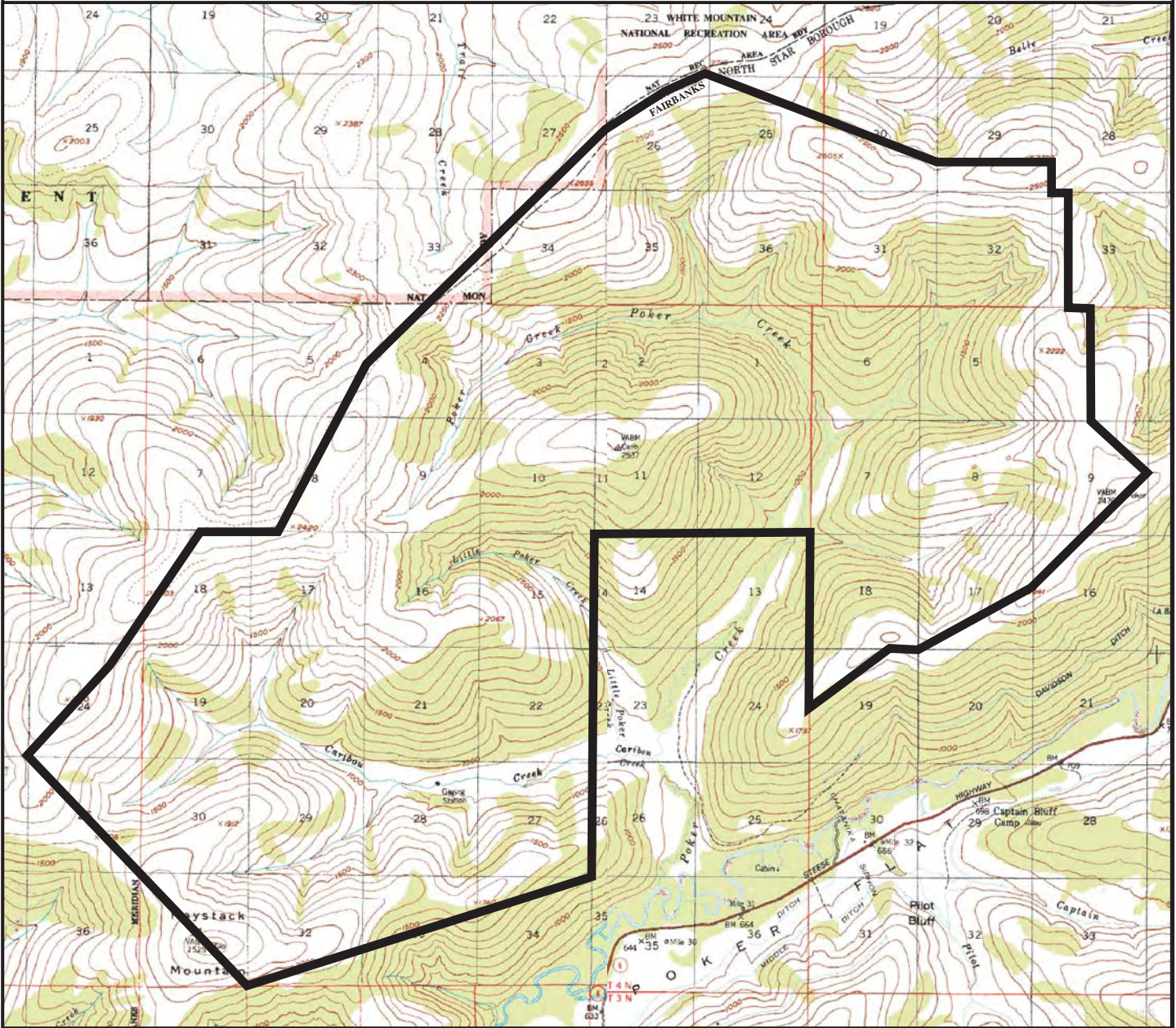


# Caribou-Poker Creeks Watershed



Prepared by: DNR  
Source USGS Livengood A1, A-2  
Date: 12/2004

one mile

Meridian	Township	Range
F	04N	1E-2E

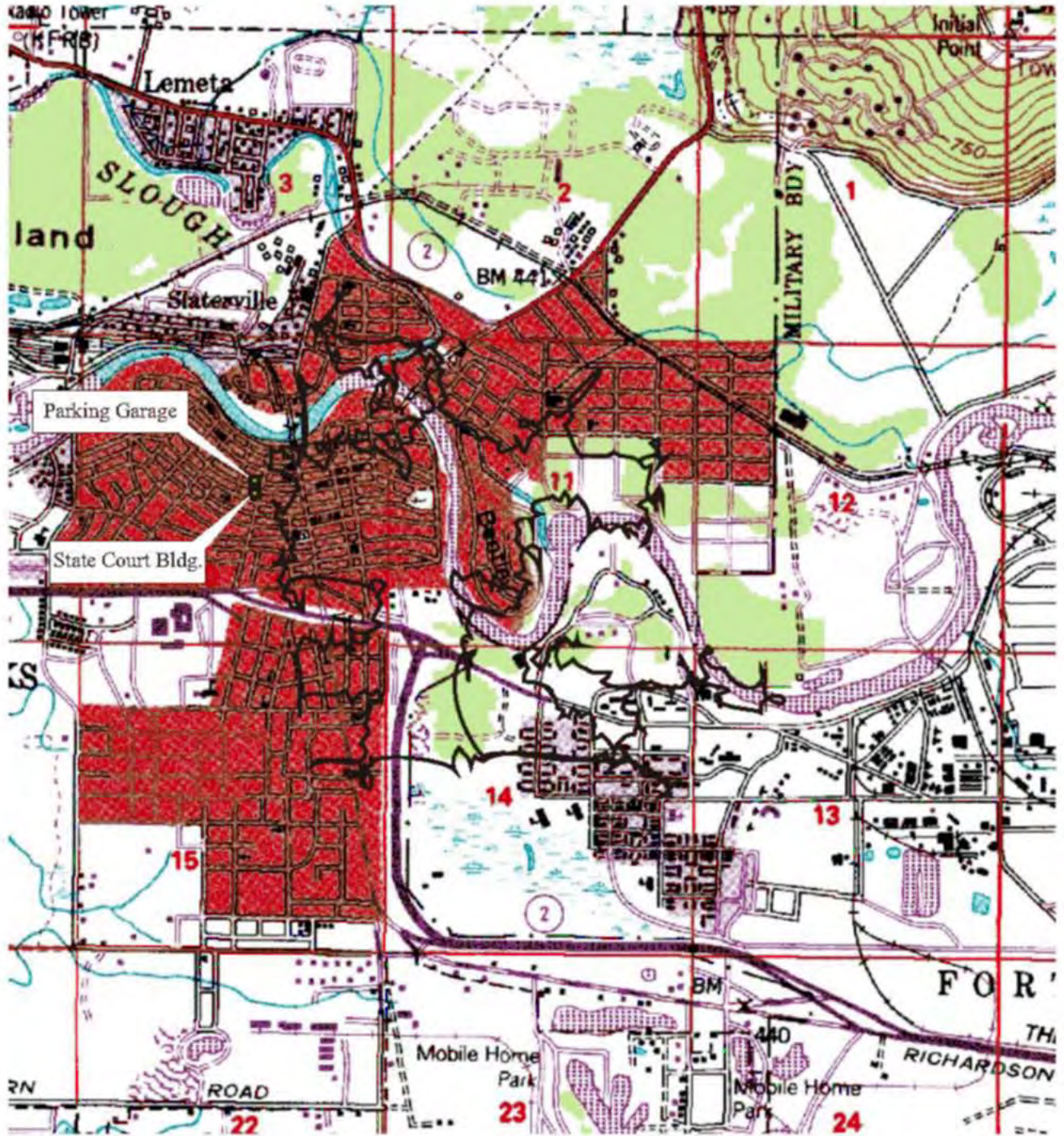




# Fairbanks Downtown Parcels

N2.FA.1001 Parking Garage

N2.FA.1002 Old State Court Building



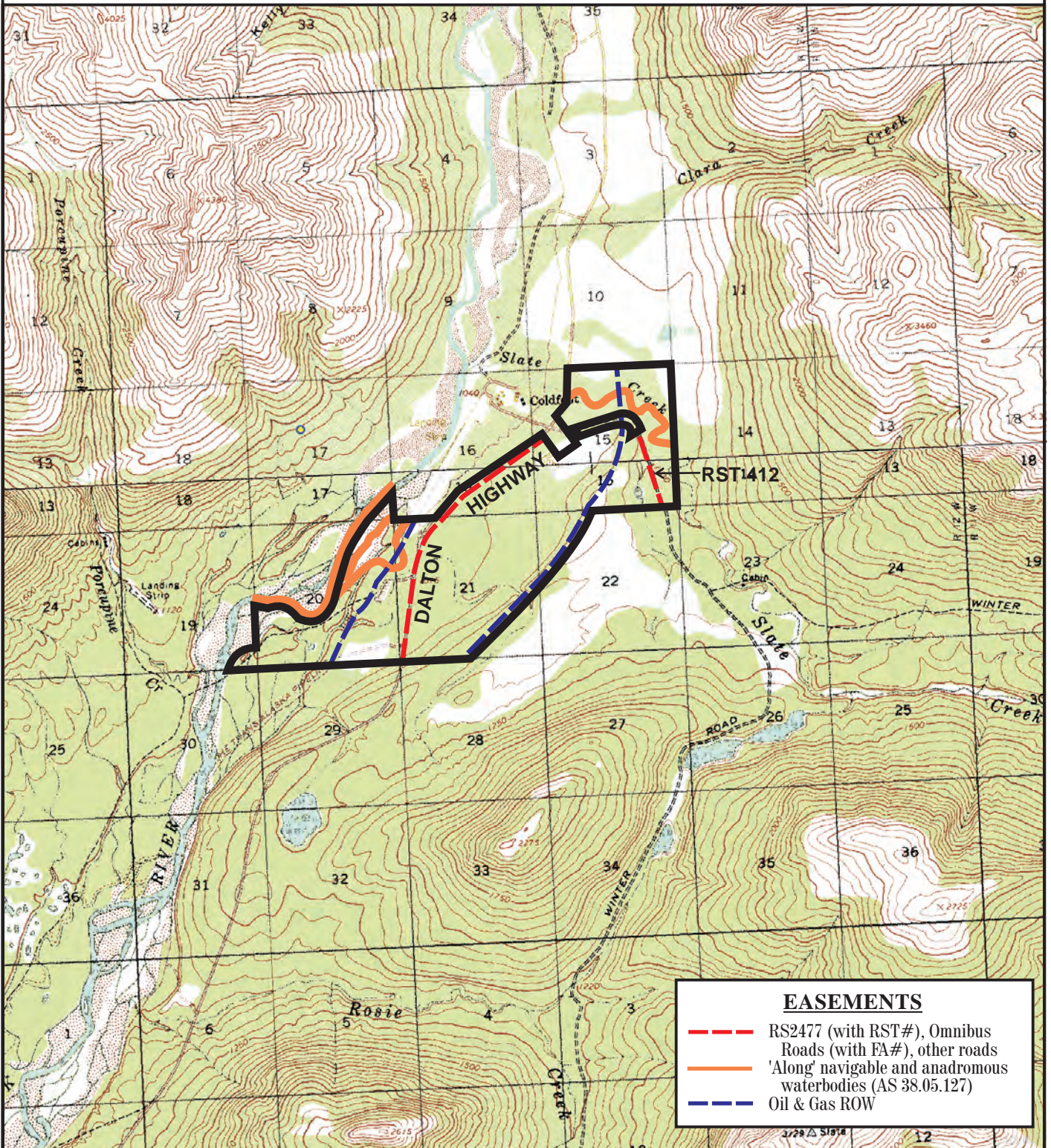
Prepared by: DNR  
Source USGS Fairbanks D-2  
Date: 12/2004

1/2 mile

Meridian Township Range  
F 1S 1W

# Haul Road Nodes - Coldfoot

MA.HR.1001



Prepared by: DNR  
 Source USGS Wiseman A-1, B-1  
 Date: 12/2004

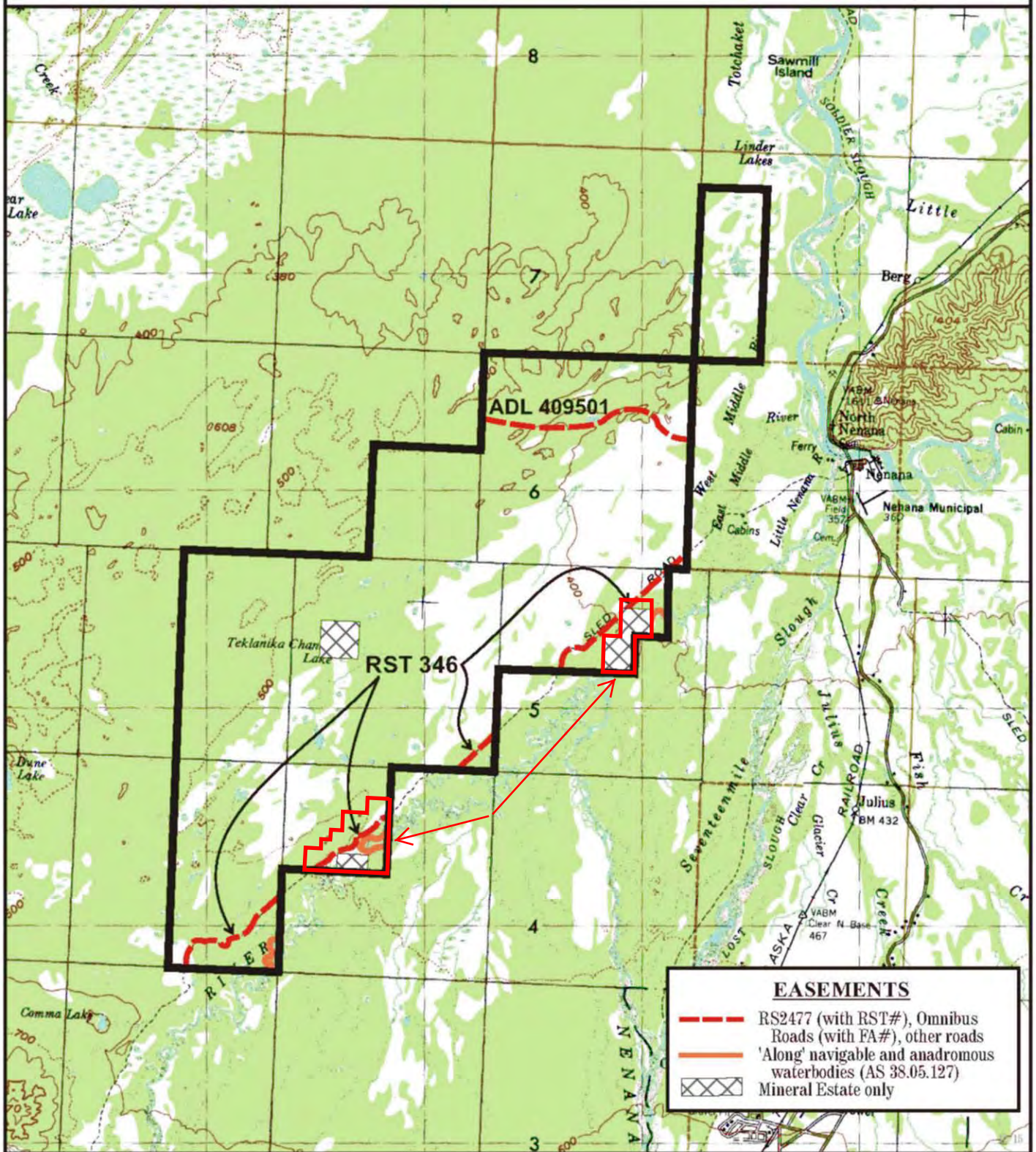
— one mile —

Meridian	Township	Range
FM	28N	12W





# Nenana Oil & Gas Tract

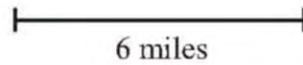


**EASEMENTS**

- RS2477 (with RST#), Omnibus Roads (with FA#), other roads
- 'Along' navigable and anadromous waterbodies (AS 38.05.127)
- XXXX Mineral Estate only

Prepared by: DNR  
 Source USGS, Fairbanks B-5 B-6, C-5, C-6  
 Date: 12/2004

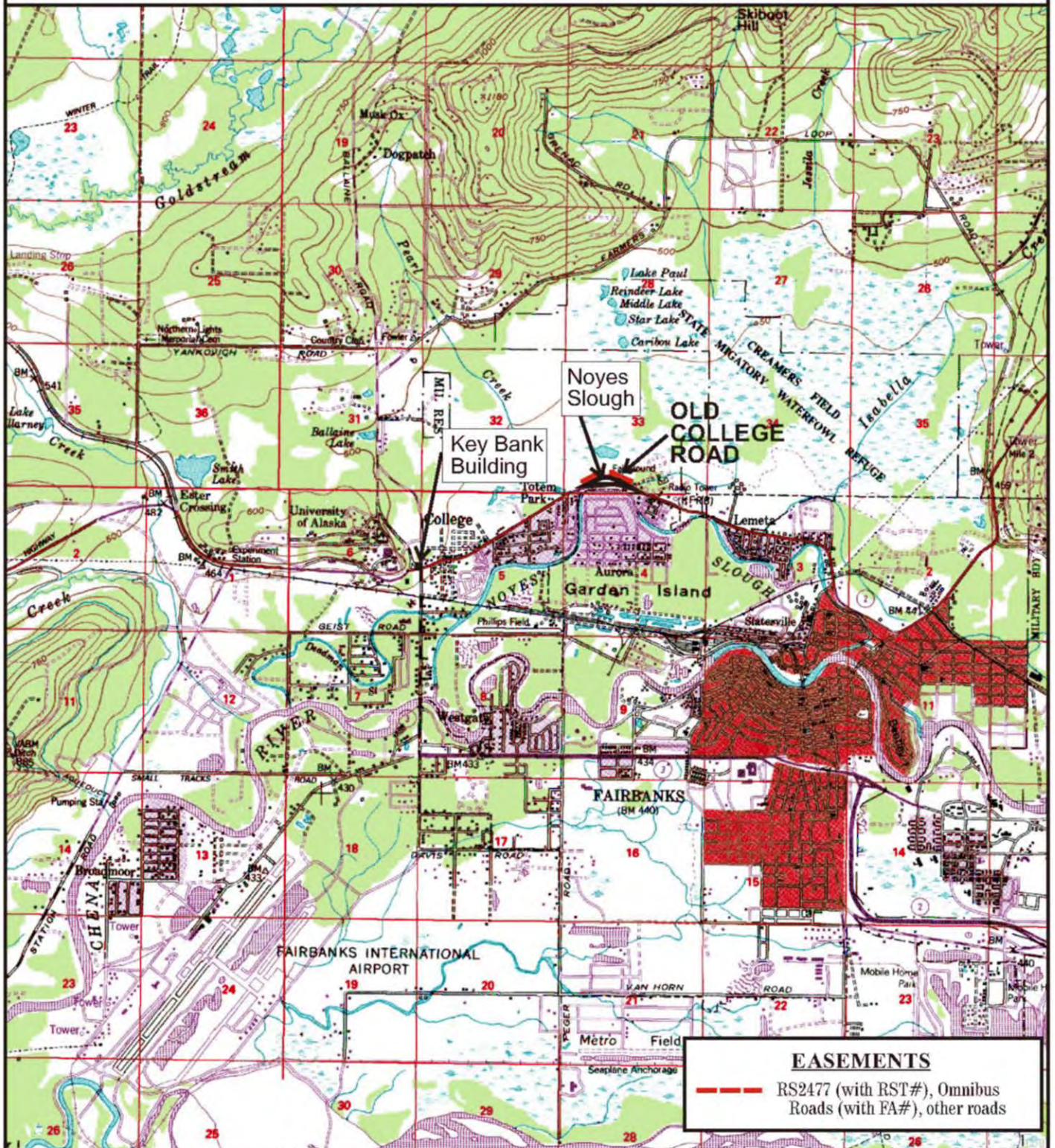
Meridian	Township	Range
FM	3, 4, 5, 6S	8, 9, 10, 11E





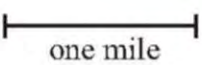
# Fairbanks Area Parcels

N2.FA.1003  
N2.FA.1004



**EASEMENTS**  
 - - - RS2477 (with RST#), Omnibus  
 Roads (with FA#), other roads

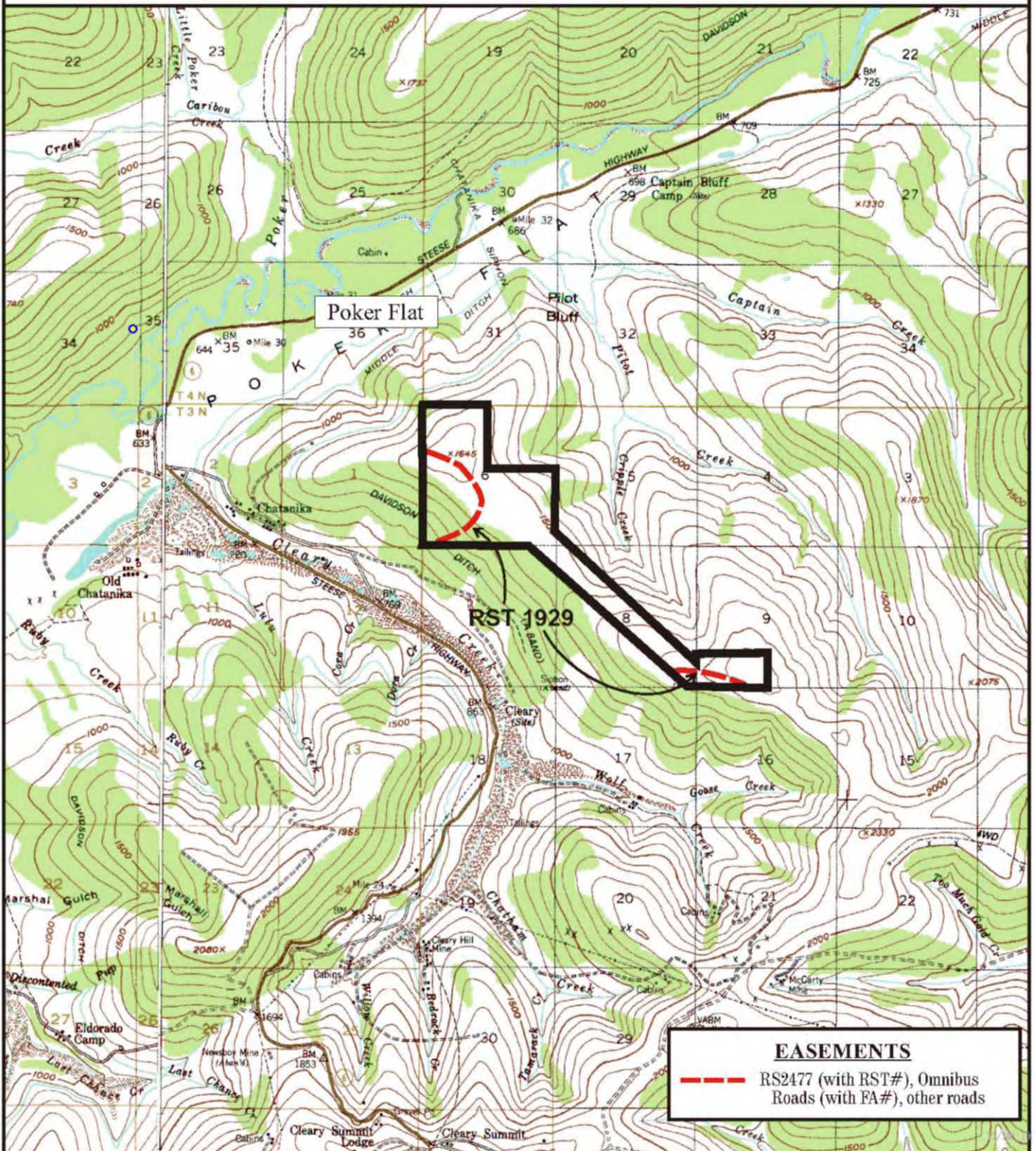
Prepared by: DNR  
 Source USGS Fairbanks D2  
 Date: 12/2004



Meridian	Township	Range
FM	1N-1S	1W

# Poker Flat Lease

MA.PF.1001



Prepared by: DNR  
Source USGS, Livengood A-1  
Date: 12/2004

one mile

Meridian  
FM

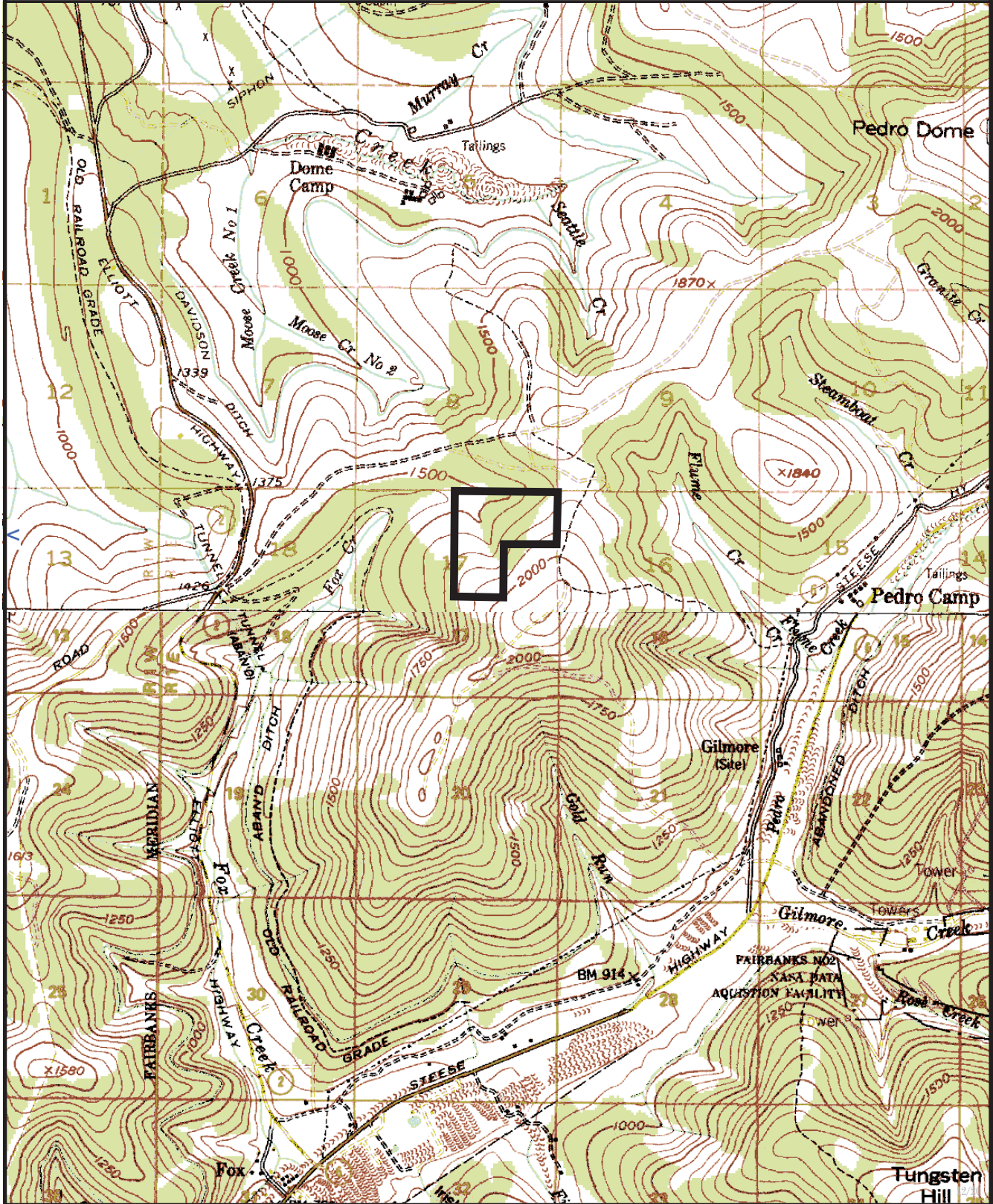
Township  
3N

Range  
2E

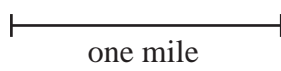


# Silver Fox Mine

MA.SF.1001



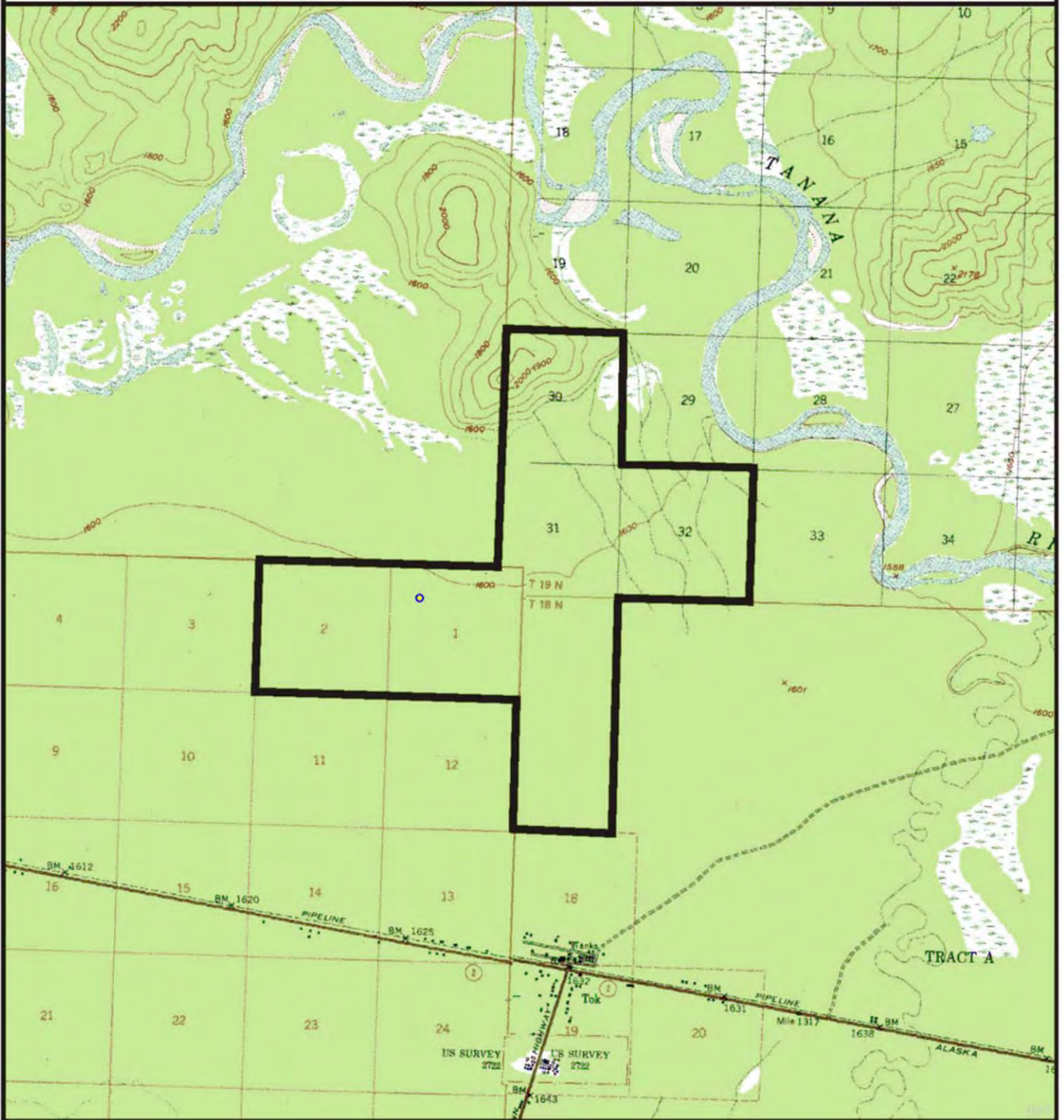
Prepared by: DNR/rhc  
Source USGS, Livengood A-2  
Date: 12/2004



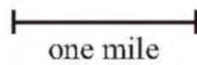
Meridian FM  
Township 2N  
Range R1E

# Tok Research Forest

TV.RF.1001



Prepared by: DNR  
Source USGS, Tanacross B-4, B-5  
Date: 12/2004



Meridian	Township	Range
CRM	18-19N	12-13E