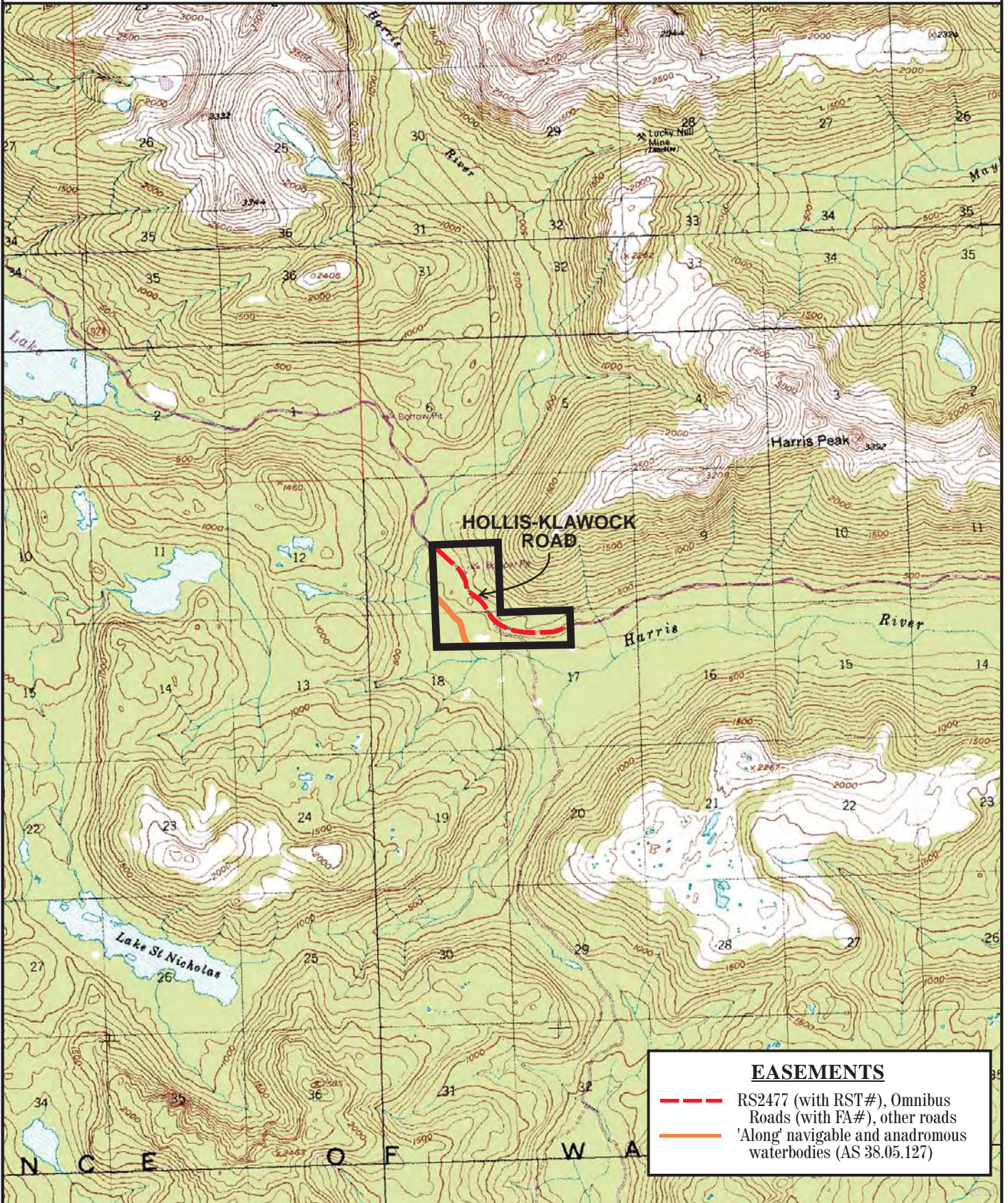


Harris Road Junction

CR.1001



EASEMENTS
--- RS2477 (with RST#), Omnibus Roads (with FA#), other roads
— 'Along' navigable and anadromous waterbodies (AS 38.05.127)

Prepared by: DNR
Source USGS Craig B-3
Date: 12/2004

—|—|—|
one mile

Meridian	Township	Range
CRM	74S	83E